



Sheraton Motor Inn

Dakota's most productive farm land, and flowers and trees fill over 900 acres of city parks and other public grounds.

And, it's an exciting city in the fall when thousands of people from all over the nation come to Aberdeen for Northern State College's Gypsy Day celebration and the pheasant hunting season.

There's a great deal to do and see in Aberdeen. From discos to nightclubs, from fast food restaurants to leisurely dining with live entertainment, Aberdeen IS a good-time city.

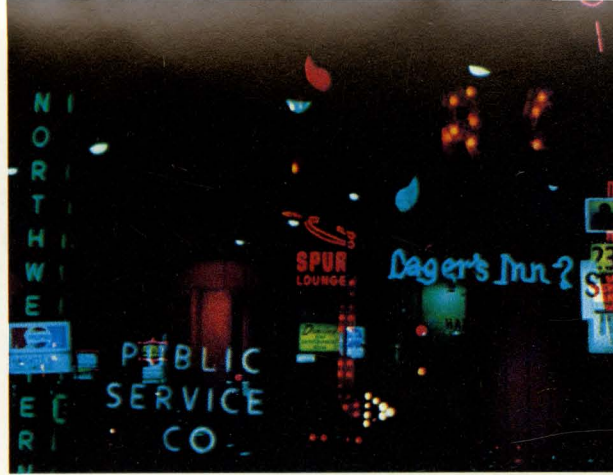
Over 40 Aberdeen restaurants and as many lounges and night spots can satisfy the entertainment and dining variety desires of the most particular person.

If movies and live drama fit your taste, Aberdeen has five theaters featuring the finest film entertainment of the day. Year-around theatre is produced through the drama department at Northern State College.

If you prefer outdoor sports, Aberdeen has 32 tennis courts, two public swimming pools, and three interesting and challenging 18-hole grass green golf courses. For water sports enthusiasts, Richmond and Mina Lakes provide sailing, swimming, skiing, boating and fishing.

Aberdeen entertainment centers feature live bands and top stars from near and far.

Aberdeen offers its visitors a zoo, a museum, libraries, and art galleries.



This brochure was published by the Convention & Visitors Bureau of the Aberdeen Area Chamber of Commerce with the additional support of the following civic minded members:

ABERDEEN SUPER 8 MOTEL
2401 SE 6th Ave.

AVALON MOTEL
1923 SE 6th Ave.

BONANZA SIRLOIN PIT
1010 SE 6th Ave.

CAESAR'S FAMILY RESTAURANT
2220 SE 6th Ave.

HOLIDAY INN
2727 SE 6th Ave.

R. E. HUFFMAN CO.
206 South Main

JORGENSEN'S MEN'S SHOP
423 South Main

KIRKPATRICK'S JEWELRY
416 South Main

LAMPERT BUILDING CENTER
East Highway 12

MALCHOW'S
502 South Main

MCDONALD'S RESTAURANT
1615 SE 6th Ave.

MISTER'S MEN'S WEAR
208 South Main

NORTH PLAINS PRESS
1216 South Main

P. J. DISTRIBUTING
620 SW 6th Ave.

PARCEL OIL CO.
702 SE 6th Ave.

J. C. PENNEY CO.
401 South Main

PEPSI COLA BOTTLING CO.
11 North State

PLYMOUTH CLOTHING
212 South Main

SEIBRECHT FLORIST
311 South Main

SHERATON INN
1400 NW 8th Ave.

TACO JOHN'S
2300 SE 6th Ave.

WEBER FLORAL & GREENHOUSE
909 NE 1st Ave.

GOOD TIME CITY

ABERDEEN

S. D.



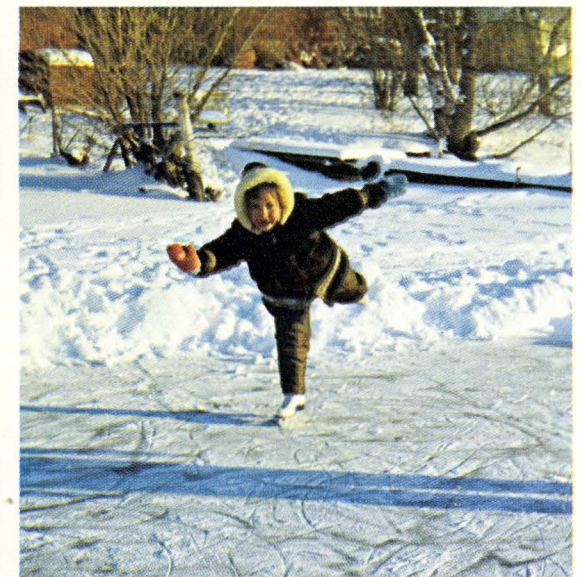
GOOD TIME CITY ABERDEEN

Aberdeen's religious community includes 28 Protestant churches representing 17 denominations, two Catholic churches, and a Jewish synagogue.

Seasonal entertainment comes with different events. In the summer, Aberdeen hosts some of the finest softball tournaments and one of the Dakotas' biggest rodeos is produced here. In the fall, winter and spring, the area is proud of its college and high school sports. One of the largest cross-country snowmobile races in the U.S. is an annual event in Aberdeen and the South Dakota Snow Queen Festival has been named one of the top events in the nation during the month of January.

For the shopper, Aberdeen features a wide variety of department stores and specialty shops.

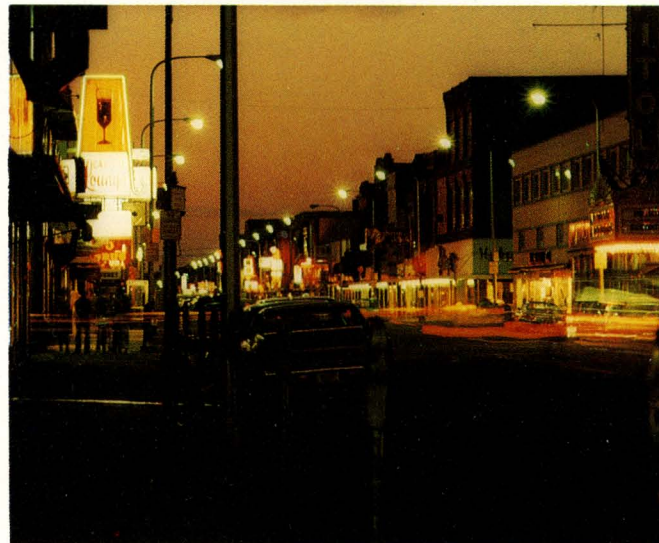
Aberdeen is a great place to spend a weekend or a lifetime. Friendly, courteous people will make sure you're happy in the city. Aberdeen's 30,000 friendly faces combined with excellent food, superior shopping, great entertainment and lodging make Aberdeen the center of activity for northcentral and northeast South Dakota.

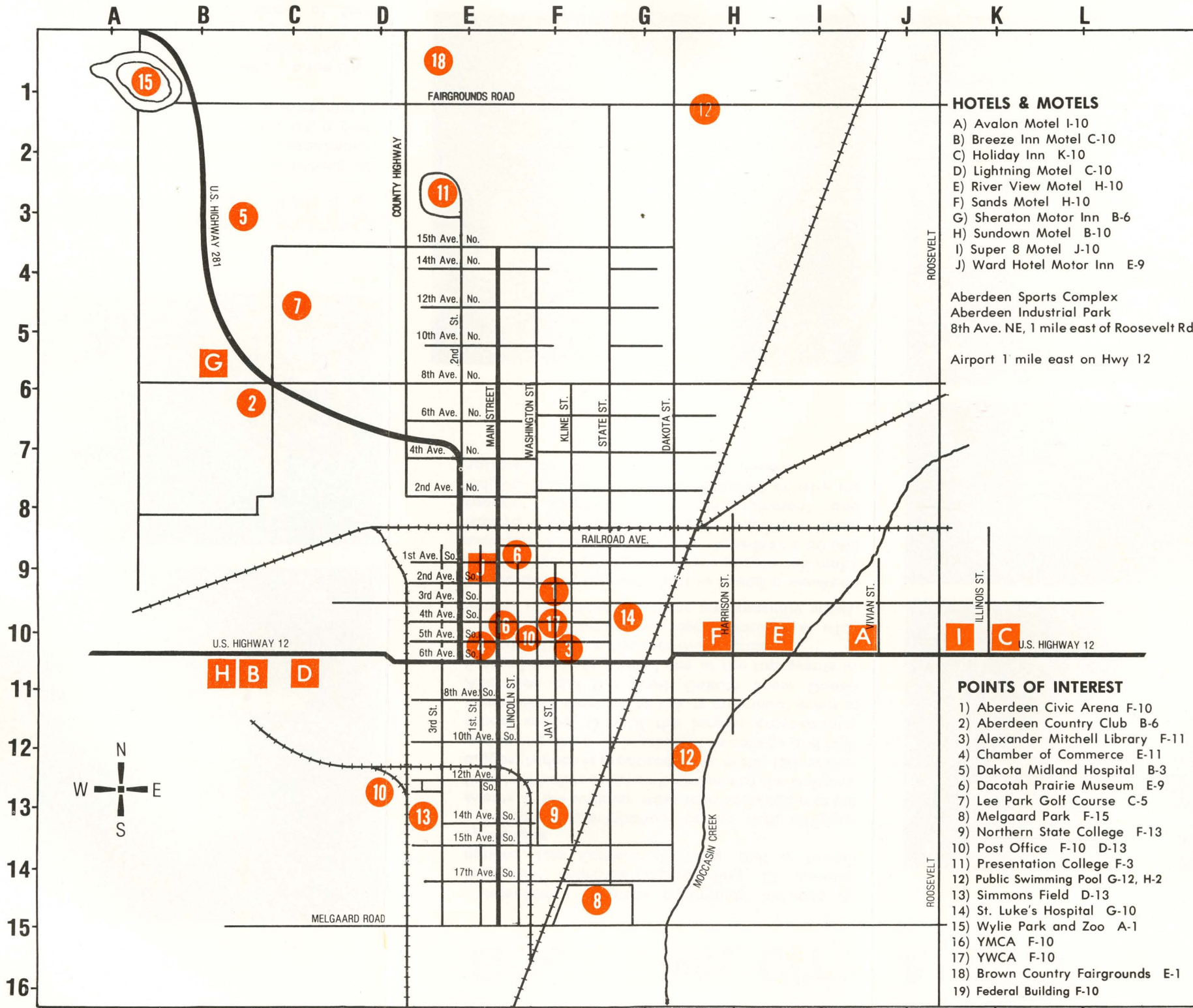


GOOD TIME CITY

ABERDEEN, SOUTH DAKOTA . . . a good-time city . . . filled with good-time people. Approximately 30,000 live in the city of Aberdeen. It's a great place to live, a challenging place to work and an exciting place to visit.

Aberdeen is a city of all seasons . . . a fun city in winter, with skating, skiing and snowmobiling . . . a beautiful city in spring and summer when the countryside turns green with some of South





HOTELS & MOTELS

- A) Avalon Motel I-10
- B) Breeze Inn Motel C-10
- C) Holiday Inn K-10
- D) Lightning Motel C-10
- E) River View Motel H-10
- F) Sands Motel H-10
- G) Sheraton Motor Inn B-6
- H) Sundown Motel B-10
- I) Super 8 Motel J-10
- J) Ward Hotel Motor Inn E-9

Aberdeen Sports Complex
 Aberdeen Industrial Park
 8th Ave. NE, 1 mile east of Roosevelt Rd
 Airport 1 mile east on Hwy 12

POINTS OF INTEREST

- 1) Aberdeen Civic Arena F-10
- 2) Aberdeen Country Club B-6
- 3) Alexander Mitchell Library F-11
- 4) Chamber of Commerce E-11
- 5) Dakota Midland Hospital B-3
- 6) Dacotah Prairie Museum E-9
- 7) Lee Park Golf Course C-5
- 8) Melgaard Park F-15
- 9) Northern State College F-13
- 10) Post Office F-10 D-13
- 11) Presentation College F-3
- 12) Public Swimming Pool G-12, H-2
- 13) Simmons Field D-13
- 14) St. Luke's Hospital G-10
- 15) Wylie Park and Zoo A-1
- 16) YMCA F-10
- 17) YWCA F-10
- 18) Brown Country Fairgrounds E-1
- 19) Federal Building F-10

GOOD TIME CITY ABERDEEN

HOW DO WE GET THERE . . . ?

Aberdeen is conveniently served by federal highways 12 and 281, Jack Rabbit and Greyhound Bus Lines and daily jet service by North Central Airlines. Taxi service in the city is always available while you are here.

WHERE WILL WE STAY . . . ?

Aberdeen has over 600 fine motel and hotel rooms for convention and business guests. Visitors to Aberdeen have access to three modern camping facilities.

WHERE CAN WE MEET . . . ?

The Johnson Fine Arts Center auditorium on the campus of Northern State College seats over 1,000 persons; the downtown Aberdeen Civic Theater accommodates 1,400 persons; the adjoining Civic Arena, 3,800 persons. Our hotels and motels have meeting rooms, and other public meeting rooms are available.

WHERE WILL WE EAT . . . ?

Aberdeen has over 40 restaurants which can accommodate up to 5,000 persons. Many of these fine establishments are open 24 hours a day.

HOW CAN WE FIND OUT MORE . . . ?

If you are planning a business meeting, convention, or desire further information please call the Aberdeen Chamber of Commerce (605) 225-2860. The Chamber is prepared to help you arrange your visit to Aberdeen.

