



# **St. John's Evangelical Lutheran Church**

**Missouri Synod**

**Groton, South Dakota**

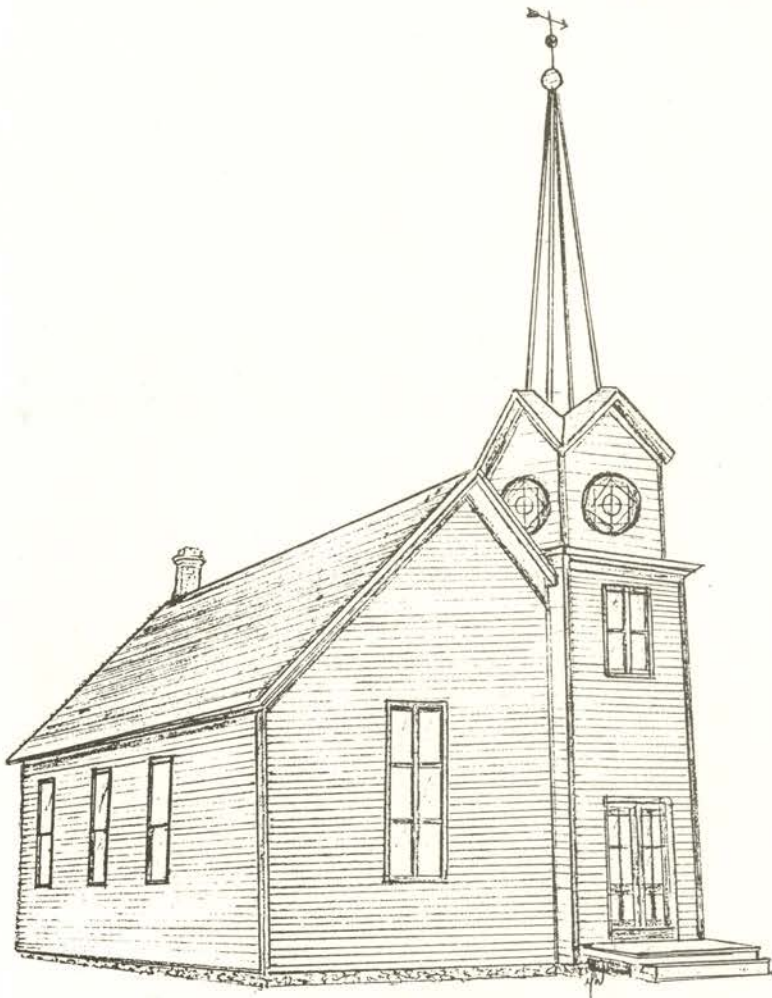


**“A Century with Christ”**

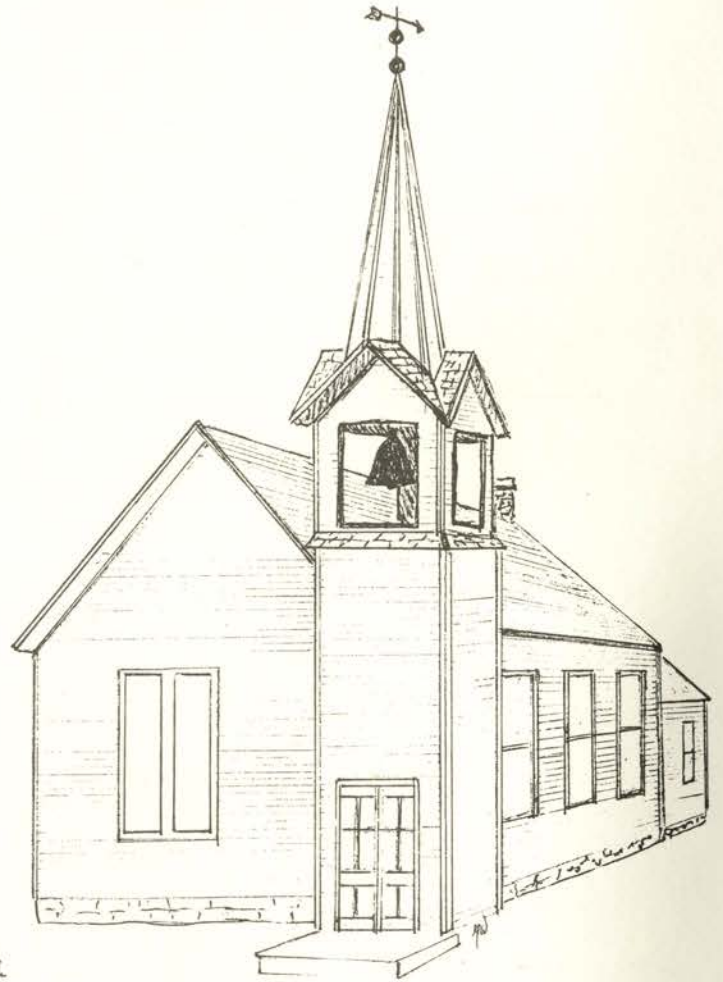
**1893-1993**



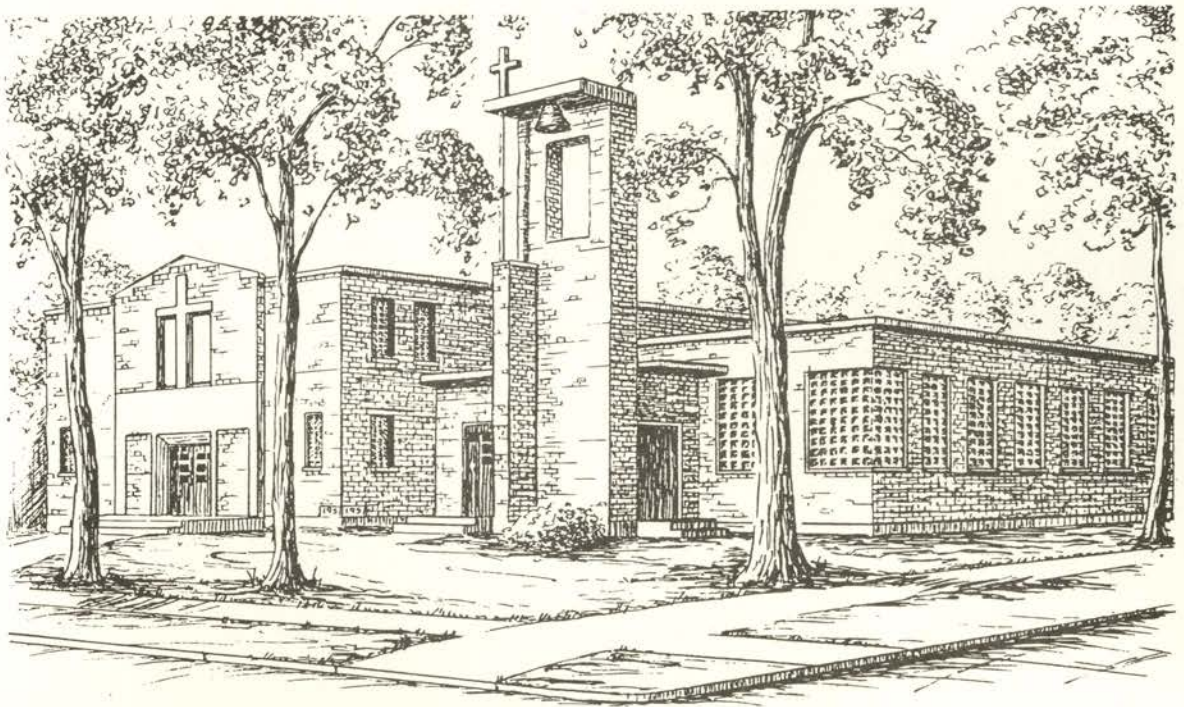




1893-1925



1925-1950



1950-1963



## ST. JOHN'S LUTHERAN CHURCH HISTORY

The population of this section of the Dakota Territory was extremely sparse prior to 1881. The building of the east-west railroad and the plotting of town sites encouraged an influx of hundreds of homesteaders, artisans, and merchants to populate the area. The new Dakotans had left their homes in eastern United States and countries of Europe to seek their fortune in Dakota.

The population of the immediate Groton area was so diverse in nationality and spiritual persuasion that the establishment of a Lutheran congregation in the town of Groton was apparently not of a high priority. There were Lutheran congregations organized around Groton several years before the organization of Evangelical Lutheran St. John's congregation on March 5, 1893.

The Lutheran church near James, with parsonage and cemetery, was located four miles west of the town of Groton. The Lutherans living in Groton apparently found being a part of that congregation quite acceptable. The baptismal records of the James congregation, that begin October 8, 1882, contain the names of families that later organized our congregation in Groton. The first Lutheran services held in Groton were led by a Pastor Hinck, followed some years later by a Pastor C. C. Metz. These services were held in various places that were available, such as the Episcopal Chapel and the school. These services were on an irregular basis, with varying attendance, and stopped when Pastor Metz moved to Detroit, Michigan the summer of 1890. There is no indication of the home location of these pastors while they held services in Groton. Pastor Schilke of Trinity Lutheran of James tried holding services in Groton for a time but discontinued them because of poor attendance.

Sometime between 1890 and 1893 Pastor Henry Ehlen, a missionary-at-large for Day, Marshall, and Brown counties, making his home in Webster, began holding services in Groton. These services were held in various places and were quite well attended. The intent to organize a congregation following the next service was announced. Following that service on March 5, 1893, a constitution for an Evangelical Lutheran congregation was read, section by section, and seven men signed a copy of the constitution. They were William Koepsel, F. H. Kuehnert, Albert Erdmann, William Walter, Carl Ziesman, Frank Kuntz, and Carl Voy. Although the service was well attended, the section of the constitution denying membership to members of secret organizations deterred many from signing.

The Word of God and the belief that Christ is Lord of all prevailed at the organization of our congregation and still does today -- one hundred years later!

It was on April 10, 1893, that a "Special Meeting" was held at which a committee was authorized to buy the "College Chapel being offered for sale" and the lot (described) which is our present location, and to move the chapel as soon as purchased, to the lot. (The chapel was located in the present 900 block of North Main Street on the west side of the street.)

The location of our church has not changed in these one hundred years and the original building, dedicated July 8, 1893, had changed very little in the fifty-seven years that it was our worship center.

Pastor H. Ehlen served the Groton congregation and in 1894 began serving the St. John's, West Hanson, congregation also. The special concern of our early members for the Christian instruction of their children, is demonstrated by the hiring of a theological student to teach during the summer. Student Henry Bouman was here a number of summers and later Student H. Kelm was here a number of summers as well. Both were later ordained and served congregations in Minnesota.

In addition to having special summer school, the church minutes record the ordering of Sunday School booklets, cards, and other children's instruction material. In 1900 a school room was built on to the west end of the church, and two men of the membership were asked to assist with teaching of Sunday School.

On January 1, 1901, the voters decided that the Christmas tree should always be a part of the Christmas festival.

Pastor Ehlen died of poor health as quite a young man in 1902. Our Groton congregation called Pastor R. F. Zimmerman of Great Falls, Montana, and he came to Groton in October, 1902. A new congregation had been organized in Andover in 1902 by Pastor H. F. Bunke, who left shortly thereafter. Pastor Zimmerman then served Groton and Andover as a dual parish from 1903 to 1906, when he accepted a Call to St. Paul, Minnesota. In 1901 the present parsonage location was purchased as a bare lot. In 1903 the parsonage and barn were built, and immediately put to use.



Regular worship services drew people to attend and also to join the congregation as contributing voting members, signing the constitution as an oath to support it. In June, 1908 it was decided that the young men 21 years old and raised in the congregation, must also ask to be voting members and sign the constitution. The voters assembly was diligent in following the Word of God and the constitution and regularly sent a delegate to the Synodical Convention. (A delegate was sent to the first convention of the South Dakota District of Synod in Freeman, 20-25 April, 1906.)

Following Pastor Zimmerman's departure in 1906, Pastor Graef of Trinity, James, served as vacancy pastor for the parish and assisted in Calling a pastor. Pastor August Senne of Oakland, Iowa, accepted the Call to Groton and Andover and arrived in May, 1907, staying until October, 1920. Prior to Pastor Senne's arrival, the church minutes state 'that the worthy women be asked to be present to discuss and plan to clean and paint the parsonage.' Much of the "modernization" of the parsonage took place during Pastor Senne's service with us. The beginning of the change to English language also took place during these years. In June, 1908, it was decided to buy 20 English Hymnals and in July, 1910, it was decided to have English services occasionally. In January, 1919, it was decided 'that January through April there are to be alternate German and English services'.

The Ladies Aid was organized in 1910. The Ladies Aid met in the home of a "hostess", and the Pastor was expected to attend to lead Bible study and the singing of hymns. Certainly a lunch was served, and a collection must have been taken. The ladies had work projects that resulted with income, with bake and food sales and serving for families with funerals being among them. The ladies used much of their money for the good of the congregation. In 1916 they paid to have cement sidewalks laid around the parsonage lot and in 1917 they paid to have an improved (wooden) floor laid in the library and hall upstairs in the parsonage.

In 1915 the voters assembly decided that the front (east) windows of the church should be lowered, and that work was done by a member committee.

With the change of times and the coming of some modern conveniences, the parsonage was improved. The basement of the parsonage was cemented in 1907, and the first telephone was installed in 1907 also. In 1909 an ice house was built "for the Pastor's convenience" and used until 1919, when it was sold "for what we can get for it".

In 1911 city water was piped into the parsonage and electricity was installed in both the parsonage and the church. Toilet fixtures were added in 1914 and a furnace in 1920.

In 1918 the congregation discussed putting a new foundation under the church but decided it was too costly. It was decided to start a Building Fund to build a new church "after the War". The 25th Anniversary of our church was celebrated with Mission Fest on June 30, 1918.

While changes were taking place in the property of the congregation, the mission of the congregation to preach and teach the True Word of God remained the same. The congregation continued to send a delegate to Synod conventions, participated in a collection for "Camp Pastors of the Army and Navy" in 1918 and a Synodical collection of \$3 million "Extension Fund" in 1919.

Pastor Senne was given a peaceful release to accept a Call to Alcester, South Dakota, in 1920.

The congregation decided to ask Pastor Frank E. Wilke of Trinity, James, to be our vacancy pastor but two weeks later, on October 24, 1920, decided to join with James in a dual parish. The Andover records indicate that Pastor Wilke declined to also serve that congregation. Pastor Wilke now served Groton and James, and continued to live in James. The Trinity, James, congregation had, in 1903, built a new church on the west side of the town of James and moved the old church, for a school room, and the parsonage away from the cemetery. Pastor Wilke moved to Groton in the summer of 1925 when his first child was ready to start school.

On September 13, 1927, the voters decided to put a bath tub into the parsonage. The location and actual 'doing' is not recorded, however, the Ladies Aid records for 1928 say that the Aid and the Birthday Club joined in paying for a bathroom in the parsonage, remodeling a small bedroom for that purpose.



Pastor Wilke served the Groton and James parish until 1936 when "remapping" by the South Dakota District of Synod joined James with West Hanson and Groton with Ferney as dual parishes. Pastor Wilke then served the Groton and Ferney parish until accepting the Call to Zion, Rapid City, in January, 1942.

The movement from the German to the English language continued. The last voters meeting minutes written in German are dated April 29, 1928. Sunday services were alternated in language, and in January, 1929, it was directed that "the mid-week Lenten service be in the same language as the preceding Sunday". In January, 1931, the voters decided to "try the new English liturgy in the hymnal". In November, 1936, the voters decided that there will be English services each Sunday and German services one hour before on two Sundays each month. Diminishing attendance at the German language services soon brought about the complete elimination of them.

The Ladies Aid continued its activities. In 1920 they financed the "fixing-up" of the inside of the church, and in 1923, the church bell tower needed to be repaired and strengthened. The Ladies Aid now came forward to pay for the repair of the tower and also purchased a new bell and clapper and had them installed in the tower. The outer appearance of the tower was changed by this work.

The minutes record several discussions, during the early years of our congregation, of changing the chancel furniture. The first chancel furniture, possibly purchased with the 'college chapel', is shown in the background of an early confirmation picture. The altar was in the middle of the chancel with the pulpit directly above it, with several steps, along the back wall, leading up to it. The lectern and baptismal font are not clearly visible. The chancel furniture in use when our congregation decided, in 1950, to build a new church, was purchased in 1925. This furniture was white with gold trim. The altar, in the center of the chancel, had a high decorative frame at the back, which held a picture of Jesus knocking at the door. (This same picture now hangs on the wall of our parish hall). The pulpit and lectern were at the left of the altar (when facing the altar) and the baptismal font on the right. The decision was finally made. The furniture was to be changed.

The projects of the Ladies Aid had continued to be successful. They now came forward with the necessary funds to purchase the new altar and the picture of Christ. The baptismal font was purchased by a family and the pulpit was purchased by the congregation. The baptismal font is presently in the Dakotah Prairie Museum in Aberdeen.

In 1929 a 25 foot, bare lot adjacent to the south side of the church lot was offered for sale. The Ladies Aid bought this property and deeded it to the congregation.

The change of times was making it acceptable for youth to have fun in church activities. The Lutheranites was formed and filled a need for Christ centered training and God-pleasing entertainment. Lutheranite membership was restricted to the young confirmed members.

In 1931 the American Legion wanted to begin its youth baseball program in Groton. Several of our boys were interested in being a part of this program. A coach was needed. Pastor Wilke, a sports fan, volunteered to be the coach of the first American Legion baseball team organized here in Groton. Pastor Wilke's action made it possible for the Groton Legion Post to begin an ongoing youth activity in which our youth participate today. The first Legion baseball in South Dakota was in 1925.

The change from traveling by horse and buggy to traveling by automobile certainly must have helped a pastor to care for the two congregations of the parish, serve as Vacancy Pastor in other congregations, when asked, and to assist in other community activities as well.

Following Pastor Wilke's departure in January, 1942, the parish called Pastor J. E. Schwarting of Waubay, South Dakota. Pastor Schwarting began serving the parish in February, 1942, living in the Groton parsonage.

This was World War II time. A number of our young men and women were serving in our armed forces. Church attendance was on the upswing. Our lay leaders were encouraging contributions to the long ago established Building Fund.

In 1942 the Lutheran Women's Missionary League (LWML) was being organized. Our Ladies Aid, having had mission projects of various kinds since its organization, recognized that the affiliation with other groups would magnify their mission efforts. Our Ladies Aid became a member of the LWML in 1942. The ladies became active members, joining in the LWML



projects and attending Zone, District, and (now) International Conventions. Some of our ladies have been Zone and District officers.

The 50th Anniversary of our congregation was celebrated on June 20, 1943.

Our original pump organ was near the last of its days. The Ladies Aid came forward with funds, later augmented by contributions, to purchase a new Hammond electric organ in November, 1948. This organ is still in use.

On November 28, 1949, Pastor Schwarting announced that he had received a Call from Lester Prairie, Minnesota. The Groton voters assembly voted to give him a peaceful release. On December 4, 1949, after our morning service, the chairman of the Ferney congregation came and announced to us that Ferney was separating from Groton and joining Andover as a parish, and that they had called Pastor Schwarting to serve them. Pastor Schwarting accepted that Call and moved to the Andover parsonage.

Pastor Harvey Krueger of Our Savior's, Aberdeen, became our vacancy pastor. There were numerous Calls sent and returned, leading our congregation to ask Synod to assign a candidate to our congregation. Pastor Krueger assisted our leaders in moving forward with plans to build a new church. The last service held in our original church building was July 16, 1950, in which Candidate Russell M. Grundmeier was ordained and installed as pastor of our congregation. The following day the church was emptied of furnishings and was soon moved away. We were privileged to be allowed to hold our worship services and other functions in the Methodist Church while we were building our present church.

The desire for a more adequate house of worship was finally to be fulfilled. The present church, with parish hall and kitchen, was built during 1950 and 1951. The church and the new furnishings were dedicated to the Lord on November 25, 1951.

(A special note regarding the stained glass windows on the south side of the church). The symbols of the windows convey the message of the Christian life. Beginning at the front with the symbol of Baptism, then the Hand of God the Father, then the Lamb of God, our Savior, Jesus Christ, then the dove, the symbol of the Holy Spirit, then the Holy Bible, open for us to study and believe, then the chalice and wafer, the symbol of Holy Communion and lastly, the Cross and Crown, the symbol of the Crown of Life. The message -- having been baptized in the name of God the Father, God the Son, and God the Holy Spirit and continuing in His Word and the Sacrament of His Body and Blood, we shall receive the Crown of Life. These windows were purchased with funds given for this specific purpose. The preservation of these symbolic windows was a concern in the planning of the education unit which was added to our building and dedicated in 1963. The courtyard between the two buildings was the answer to this concern. It allowed the sun to continue to light the symbolic windows as well as the adjacent windows of the education unit.

Growth was the name of the game. Building the new church brought renewed enthusiasm. The Trinity, James, congregation disbanded on April 11, 1955 with a number of those members joining us. We assumed responsibility for the James Cemetery four miles west of Groton. Our Ladies Aid continued its affiliation with the Lutheran Women's Missionary League and a Men's Club affiliated with the International Lutheran Laymen's League was organized. Our Sunday School was swelling.

The records are unclear as to what age students were involved in the summer religious instruction by the seminary students hired by the congregation near its beginning. It is known that the later summer instruction was limited to pre-confirmation instruction of the older students by the Pastor. The new church provided more space. The Sunday School teachers and the Pastor now organized a Vacation Bible School, including students of all of the Sunday School classes. The "V.B.S." consisted of religious instruction, singing, and religious crafts. The V.B.S. was held shortly after the close of the public school year for two weeks of one-half days. The V.B.S. has continued, with variations, until the present time.

In 1954 the lot with an older home, again adjacent to the south side of our church lot, was purchased, with the expansion of our Sunday School facilities in mind. Some walls were removed to enlarge rooms and the Sunday School overflowed into this 'parish house'. "Release Time" from the public school was utilized for our upper grade students for religious instruction.

Even with these activities and serving some vacancies, Pastor Grundmeier still found time to "court" and be married while he was here.

On December 14, 1958, a congregational dinner was held to celebrate the final payment on the note for our new church.



Pastor Grundmeier was granted a peaceful release in December, 1959, to accept the Call to Our Redeemer, Sioux Falls.

Pastor Link of St. Paul's, Aberdeen, became our vacancy pastor, and with his vicar served us, including the instruction and confirmation of a large class of our youth. Our voters appointed a committee, at this time, to study the action to be taken to improve our Sunday School facilities. Several calls were extended and returned to us. Pastor Paul Krueger of Presho accepted our Call and was installed as our Pastor on October 23, 1960. A layman-led Bible class had been started during this vacancy, meeting in a private home, across the street from the church, following Sunday services. Layman-led Bible classes continue, now in the education unit and the parish hall.

In February, 1960, the public school was given permission to use our parish hall to hold kindergarten. It appears that it was used for two years.

On September 20, 1960, a Sunday School superintendent was elected by the voters assembly, and on December 7, 1960, the voters reversed themselves and voted that the Sunday School teachers should choose a superintendent from among themselves. It was also December 7, 1960, that the voters authorized the procurement of the kneeler and rail insert for use while serving communion.

On July 6, 1961, the chairman of the Education Committee reported to the voters assembly that there were 109 students, 14 full time teachers and 2 part time teachers in our Sunday School.

A building committee for an education unit was elected in January, 1961. Several plans were presented to the voters assembly and a plan was finally accepted. The parish house was removed and our present education unit was built, using all of our church property. The education unit was dedicated March 10, 1963.

Our congregation had a trial period of two Sunday Services, with Sunday School between, beginning in February through October, 1962. The voters decided to return to a single service.

In 1962 the Circles were organized. The purpose of the Circles was to be a Bible study group, smaller than the Ladies Aid, and to accept responsibility of a certain part of the ministry of our congregation. The Circles organized were: Altar, Chancel, Christian Literature, Good Cheer, Library, Missionary, and Nursery. Years later, the Chancel and Library Circles were disbanded. The Circles often met in the homes of its members, and each Circle took responsibility for the ministry its name described. Some of the Circle members were members of the Ladies Aid (LWML) and some were not.

January 10, 1965, the voters assembly amended our congregation's constitution to provide 'term limitation' of our congregational offices. These provisions remain in force.

July 4, 1965, Pastor Krueger was granted a peaceful release to accept a Call to Davis, California.

Pastor Solberg of Britton became our vacancy pastor. We again had an extended vacancy. Pastor Solberg instructed a class of confirmands and performed their confirmation ceremony.

On January 30, 1966, Pastor Gordon Buchholz of Wood Lake, Minnesota, was installed as pastor here at St. John's.

April 13, 1966 the Board of Parish Education was established by the voters assembly. The Board consisted of an elder, Sunday School superintendent, the two division superintendents, and two members at large, elected by the voters assembly.

October 18, 1966, the voters honored the request of the pastor to commune the infirm sitting in the front pews of the church.

January 15, 1967, the voters assembly assumed the full cost of Sunday School material and at the election meeting for the year of 1968 began again to elect the Sunday School superintendent.

Groton Public School rented the 2-4-6 dividable room of the Education Unit for a school grade, using it for the 1967-68 and 1968-69 school years, while additional public school facilities were being built.



On June 16, 1968, the 75th Anniversary Celebration was held with special services both morning and afternoon and dinner served in the public school gymnasium.

On December 18, 1968, a Parsonage Committee was directed to study ways to improve our parsonage, with buying a home, building new, or remodeling the old, being the options. A fire, in June 1969, that damaged the inside of the parsonage narrowed the options. In July, 1969, the old parsonage and the barn (now a garage) were destroyed and plans were made to build new on our lot. A house in Groton was rented as a residence for Pastor Buchholz until his departure.

In February 1969 a number of former members of St. John's of West Hanson joined our congregation. The country congregations of our area were having trouble retaining membership. Trinity of James had disbanded in April, 1955, and on January 26, 1969, St. John's of West Hanson held their last service. The remaining members joined neighboring congregations, including our congregation and St. Paul's of Ferney. St. Paul's of Ferney accepted the responsibility for the St. John's of West Hanson cemetery, located four miles west and two miles north of Ferney. The church building was sold for \$1.00 to our sister congregation, Redeemer, of Doland and moved to their location in November, 1969.

In April, 1955, the St. John's of West Hanson church building had been destroyed by fire. The church building of the recently disbanded Trinity of James was moved to St. John's of West Hanson. A new larger front entrance was added after moving the church to the West Hanson location. This is the building that is presently at Doland.

May 18, 1969, Pastor Buchholz asked for and received a peaceful release to accept a Call to Kenosha, Wisconsin. He continued to serve us until the end of July.

Pastor Timothy Grassinger of Columbia became our vacancy pastor.

Pastor Russell Peterson of Forbes, North Dakota, accepted our Call and was installed as our pastor on November 23, 1969. Pastor Peterson and his family resided in the "second house" on the Ora Schuelke farm until the new parsonage was completed in June, 1970.

July 8, 1970, a four drawer fireproof file was authorized to be purchased to safeguard our church records.

In January, 1971, a new church directory was authorized by the voters assembly.

Our new church was 20 years old in 1971. The dorsal curtain above the altar was showing its age. It was decided to remove the dorsal curtain and paint white over the decorative paintings at each side of the curtain. The present lighted cross was installed above the altar with the entire back wall white. This was a Memorial Fund project.

The final payment on the education unit was reason to celebrate. A congregation potluck dinner was held February 13, 1972 for that purpose.

It must have been a hot day July 7, 1974, because the voters authorized the installation of an air conditioner in the parsonage. A special contribution by a family funded this project. (We are a long way from building the pastor a new ice house).

The confirmation pictures of the classes of 1973 and 1974 indicate that at some time in between, the chancel, nave, narthex and balcony of the church were newly carpeted. The original floor covering was tile blocks with a red runner in the center aisle and red carpet in the chancel. It appears that this improvement was accomplished with funds from memorials and the congregation.

The need for family mailboxes in the church narthex had been discussed for several years. December 1, 1974, the Memorial Committee reported having adequate money to purchase mailboxes, and the voters assembly authorized the Memorial Committee to purchase and install them. The mailboxes were installed in January, 1975.

September 7, 1975, Pastor Peterson asked for and received a peaceful release to accept a Call to Pine City, Minnesota.

Pastor Edwin Rumerfield of Andover-Ferney parish became our vacancy pastor.

Pastor Terry L. Cashmer of Corning, Iowa, accepted our Call and was installed as our pastor on November 30, 1975.



In July 1976 the voters assembly amended the constitution to change the Board of Elders from three to six members and soon afterward elected three additional elders.

On January 16, 1977 the voters assembly authorized the trustees and building committee to begin remodeling the interior of the church. At the conclusion of this project the stain wood ceiling with beams and new light fixtures had been installed in the chancel, nave, and balcony. Insulation was added to the ceilings, including the parish hall. The open-ended, padded pews were installed and the chancel furniture was stained a darker color. The long talked about air conditioning was the final touch of the 1977 project. The work of this project began in January and much of the work was done by members of the congregation. Funds for this project came from the congregation, memorials, and special contributions. A dedication service for the remodeled sanctuary was held on May 15, 1977.

In January, 1978, the number 6 room of the education unit was divided away from the 2-4 room with a hard wall and the number 6 room was furnished with living room style furniture.

On July 12, 1978, Pastor Cashmer announced to the voters assembly that he had received a Call to Colorado Springs, Colorado and he did accept this Call.

Pastor Victor Willman of Britton became our vacancy pastor.

At the annual meeting of the voters assembly, the Disciples for Christ counselor reported that in 1978 they had 17 members and in 1979 there were 26 members. The DFC was planning to have an Easter Sunrise Service. The voters granted the DFC funds to buy materials for activities.

Pastor Monte Gusewelle accepted our Call and was installed on January 28, 1979. He preferred to be called "Pastor Monte".

In October, 1980, conservation of heating fuel for the education unit was discussed. The voters authorized the trustees to insulate the ceilings and selected walls. This work was done during that winter.

In June of 1981 our congregation cooperated with the City of Groton in the celebration of the centennial of the city. Our congregation, as well as member families, entered floats in the parade. The City asked all of the churches in the city to assist in providing food and refreshments for the large number of people expected to attend. The Ladies Aid served refreshments in our parish hall. A special centennial service was held on June 28, the Sunday of the centennial weekend.

In October 1981 a wheelchair ramp was installed at the back door of the parish hall and in November, 1981, the voters authorized the purchase and installation of the ceiling fans in the nave and the parish hall.

On December 6, 1981, the constitution of the congregation was amended to make all male members 18 years of age voting members of the congregation; only those members that have been conscientious members for one year are eligible to hold office.

On June 21, 1982, Pastor Monte announced to the board of elders that he had decided to resign as pastor of our congregation and enter the Synod's program for Hospital Chaplaincy. On July 18, 1982, he was granted a peaceful release from our congregation.

Pastor Larry Johnson of Waubay began serving as vacancy pastor on August 8, 1982.

In July, 1982, our church joined the other Groton churches in establishing a "Transient Fund" (now Community Crisis Fund) administered by the city police. The fund is to assist "passers through" to continue their journey and to assist local residents in crisis.

On October 10, 1982, a Christian Education Scholarship Fund was established, with seminary students eligible to receive \$500.00 annually and Christian Education students eligible to receive \$400.00 annually. The printing of a new church directory was authorized at the same meeting.

Pastor Dan Elkins of Plankinton accepted our Call and was installed as pastor of our congregation on November 21, 1982.



On December 5, 1982, a plan for "Families of the Month" to divide the congregation into monthly groups to perform duties in relation to communion ware, kitchen serving, holiday decorating, etc. was adopted.

January 16, 1983, the purchase of a mailing permit for the church was authorized and the proposal to purchase the new Lutheran Worship hymnals, discussed for two years, was rejected. On April 17, 1983, the trustees recommended bricking up the windows at the top of the side walls of the chancel. This work was authorized and shortly afterward completed.

On July 10, 1983, a "Friendship Registration" in which our people would sign a card during each service (they might ask the pastor to visit, special prayers), was proposed and authorized.

On October 16, 1983, the establishment of a Handbell Fund was authorized.

March 25, 1984, the taping of our church service for showing on local cable TV (in Groton) began, with the cost covered by special individual contributions.

The Reformation Service in Aberdeen October 28, 1984, is the first appearance of our Handbell Choir that the minutes record. The Handbell Choir remains organized and performs periodically at worship services and area special functions.

On December 9, 1984, one of our members suggested that the Lazy Farmers 4-H Club be recognized for mowing the occupied portion of the James Cemetery. This is a "community project" of the 4-H Club. The members agreed. A letter of thanks was sent.

On January 20, 1985, the trustees reported that the hand rails at the steps to the chancel were completed and ready to be installed.

April 21, 1985, the contribution of the Christmas Eve service collection to Lutheran Social Services was discontinued because of differing views regarding "right to life".

July 14, 1985, the Education Committee reported success in use of video equipment with TV being used in the Sunday School. The equipment was purchased with Sunday School funds and member donations.

On October 13, 1985, the purchase of special songbooks of familiar songs not in our hymnal, but appropriate for our use, was authorized.

In April, 1986, the Groton Right to Life group was granted permission to use a meeting room in rotation with the other Groton churches for monthly meetings.

On July 27, 1986, the voters authorized girls of the congregation to be acolytes in addition to the boys authorized by the elders prior to this time.

Our congregation sponsored a James Dobson series of films entitled "Focus on the Family" in the Groton Community Center beginning September 28, 1986 with showing on six Sundays. The public was invited to this series.

A committee of the Ladies Aid came before the voters assembly on January 24, 1988, proposing remodeling of the parish hall kitchen and the trustees were directed to meet with the Ladies Committee and return to the voters assembly with a plan.

A "Witness Workshop" with Dr. LeRoy Biesenthal was sponsored by our congregation March 18-19-20, 1988. This workshop was open to the public and was held in the school gymnasium. There was another workshop on March 31 and April 1, 1989 with the theme of "Spiritual Stewardship". Both were well attended.

In August, 1988, new front doors (east) were installed in the narthex as a memorial to a congregation member.

On July 23, 1989, the public school was given permission to use our parish hall as a weather shelter in case of a bomb threat at the high school building. The permission has been renewed on an annual basis.



In July, 1989, memorial money from one of our female members was used by her family to remodel the narthex of the church, including replacing lights, carpeting the floor, painting and papering the walls as well as providing two chairs and a glass top table. The mailboxes were also moved from the narthex to the education unit front hall at this time.

Our church secretary office was moved from the room north of the chancel to the west part of the education unit in October, 1989.

Pastor Elkins received a Call from Memphis, Tennessee and held his last service here on October 22, 1989.

Pastor Larry Johnson of Waubay now became our vacancy pastor for the second time.

The trustees reported at the April 22, 1990, meeting that the kitchen had been completed and that the parsonage had been refurbished in accordance with the voters assembly authorization. The kitchen was enlarged by the removal of the restrooms next to the back parish hall door. The serving window was enlarged, and cabinets installed below it. A new doorway was installed from the kitchen directly into the parish hall and the doorway from the kitchen to the hallway was changed. The glass block windows were replaced by frame windows, and a new refrigerator, two stoves and cabinets were installed on the west and north walls. There are two twin basin sinks facing each other in a cabinet base with one end against the south wall. The floor was carpeted. The cost of the kitchen and parsonage was shared by the Ladies Aid, the congregation and memorial funds.

Pastor John T. P. Werner of Wall, South Dakota accepted our Call and was installed July 29, 1990.

On October 13, 1991, the voters assembly authorized the installation of natural gas supply pipes to the parsonage, the church, and education unit furnaces, but to not change the heating units. (Natural gas is available but not in use.)

On January 5, 1992, a committee was chosen and authorized to choose and purchase an office computer for our church, using memorial funds that had been designated for that purpose.

On January 19, 1992, the voters assembly authorized a Centennial Celebration in June, 1993, the date not to conflict with the International LWML Convention, and hopes a person or family will volunteer to chair the celebration. (June 26-27 was chosen by a volunteer committee.) At this same meeting, the voters assembly authorized two Sunday services, with Sunday School and Bible classes between. This arrangement is still in use.

On April 26, 1992, the voters assembly authorized the publishing of a new church directory for our congregation.

The term "Memorial Money or Funds" was unknown for a number of the early years of our congregation. At the time of the death of a person, it was, in early times, the practice to indicate ones love and esteem for the deceased by the purchase of flowers. The flowers withered, leaving no lasting benefit. The practice of giving flowers gave way to the practice of the giving money "in memory" of the deceased. The family of the deceased then had "memorial money" to buy for the church some items of lasting value. In some cases, the family purchased a certain item and presented it to the church, while in others the "memorial money" was given to the church to be used as the church considered appropriate or given toward the purchase of some larger item, thus joining with "memorial money" from other families.

In the previous part of this history some items are mentioned that became a part of the church building and were purchased entirely or partially with "memorial funds".

There are items that have been given that add to the beauty of the church and others that assist the congregation in the service and the worship of the Lord. Among these items are a beautiful piano, a permanent advent wreath, an eternal light, a baptismal candle with stand, a processional cross, chancel paraments, hymnals, pew card holders, office equipment and furniture, as well as upkeep and teaching equipment and supplies.

The statement has been made "that whenever two or three Lutherans are gathered together there must be a collection". Certainly this statement is made in jest, as the raising of funds to accomplish the mission of the church is serious business.



The minutes of the early years of our congregation reveal that the treasurer was to list the members and to collect from each the amount that was his share of the costs. (The members were also reminded that each was to furnish two sacks of oats for the pastor's horses). The treasurer's subscription list gave way to the envelope system in the 1930's.

The mission efforts have always been voluntary. Throughout the history of the congregation, as the need for funds for mission purposes was made known, our members have given to assist in the Lord's work at home, in our district and in our synod's foreign fields.

There have been 13 pastors that accepted the Call to serve our congregation. Each of these and their families have added to the spiritual life of our congregation. The mission of each of them has been to assist our people in the service and the praise of our Lord Jesus Christ. The manner in which their mission was carried out was often dictated, not only by their personality, but by forces outside of the congregation. Among these forces are vacancies of our sister congregations, our nation at war, the economy, and changes in society. The message at the time of our organization was "Christ and Him Crucified" and it is still the message today. Each of our pastors has left a part of themselves with us as they have gone on to serve the Lord at other locations.

Our Ladies Aid has "aged", as society has dictated that many of our younger women hold full time employment outside the home. The "Aid" ladies being the servers when congregational dinners were held has given way to "The Committee of the Month" at these occasions. In 1951 the Ladies Aid that had met in homes began meeting in the parish hall of the new church.

The leading of Bible study, once considered the realm of only the Pastor, is now carried on by laymen and laywomen as the public educational system has given confidence to our lay people. Our pastors carry on classes when they can, but at least one of our Sunday morning classes, week day evening classes and week day women's class are ongoing blessings bestowed upon us by society in the form of lay leadership.

Our youth group, post-confirmation, under different names, Lutheranes, Walther League, Disciples for Christ, continues from pastorate to pastorate. The activity of the group, led by one or two young lay persons, sometimes a married couple, sometimes not, continues to be Bible Study with fun activities added. The Easter Sunrise Service, led by the group and open to all, followed by a breakfast, is one of their activities in which all of our members are invited to participate.

Sunday School for only children was considered unnecessary by some of our early pastors. Some pastors led a Bible study for the entire congregation immediately following the worship service.

The early church minutes record the ordering of Sunday School material and also the hiring of seminary students to teach a summer school, but Sunday School as we know it today, seems to not have existed during the early years of our congregation. Word of mouth history tells me that our present Sunday School, for children only, began in the 1920's. Some mothers of the congregation joined together to teach the children. Children were divided into age groups to be taught the Bible stories, with classes scattered about the church and the school room. I recall being given a "small attendance card" each Sunday, a certain number to be traded for a "large card" and a certain number of these could be traded for a Bible story book.

From this humble beginning, our Sunday School has grown to include a male Superintendent, elected by the voters assembly but having indicated his willingness to serve, two, usually female, division superintendents and teachers for classes beginning at age 3, nursery through grade 8, pre-confirmation. The teaching facilities, which the Lord has enabled us to provide, in our education unit and the products of the present technology of visual aids have greatly enhanced the teaching of God's Word. As in the beginning of our Sunday School, it was made possible by volunteer teachers, so it is today made possible by volunteer teachers. Thank you teachers!

In compiling this history of St. John's Evangelical Lutheran Church, I have made use of our voters assembly minutes, records of our Ladies Aid, records and minutes of our sister congregations at James, West Hanson, and Andover, records of the Brown County Register of Deeds and early Brown County Atlas.

It has been my purpose to gather together the happenings of our congregation and of our sister congregations, as they related to our history, as accurately as possible.



The use of information from minutes originally written in the German language was made possible by the translation into the English language by members of our congregation, now deceased, in 1966.

I have attempted not to glorify any persons. I do, however, believe that God puts persons, places, and time together to accomplish His purpose.

The Centennial Committee and I pray that you will find this history interesting and perhaps even useful.

To the glory of our God -- Father, Son and Holy Spirit.

Robert E. Schuelke  
Chairman  
St. John's Centennial Committee



Mabel Erdmann is our oldest member. She was baptized and confirmed in the Christian faith as an adult on February 20, 1933 and became an active member. Now at age 94, Mabel lives alone with special attention from her daughter and son-in-law, Bev and Verne McCullough. Mabel is no longer able to get out but is visited by our Pastor and receives the Sacrament.



Lawrence Rohwer is our member with the longest continuous membership. Lawrence's parents were members here when he was born April 19, 1912 and baptized into the Christian faith on June 30, 1912. Lawrence was confirmed in the Lutheran faith in 1928. The picture shows Lawrence enjoying his 80th birthday party in his home in which he was born and has lived his entire life.



**PASTORS OF ST. JOHN'S EV. LUTHERAN CHURCH**



Rev. H. Ehlen  
Dec. 1891-Sept. 1902



Rev. R. Zimmerman  
Oct. 1902-Sept. 1906



Rev. A. H. Senne  
May 1907-Oct. 1920



Rev. F. E. Wilke  
Nov. 1920-Jan. 1942



Rev. J. E. Schwarting  
Feb. 1942-Dec. 1949



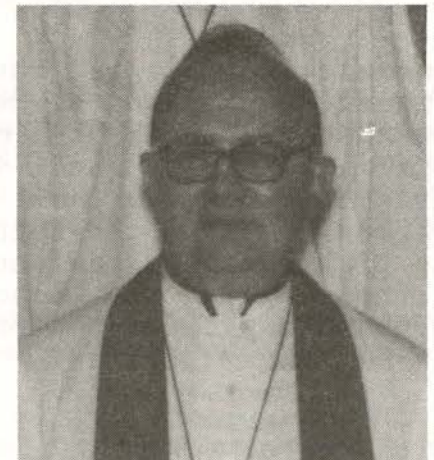
Rev. R. M. Grundmeier  
July 1950-Jan. 1960



Rev. Paul P. Krueger  
Oct. 1960-July 1965



Rev. Gordon Buchholz  
Jan. 1966-July 1969

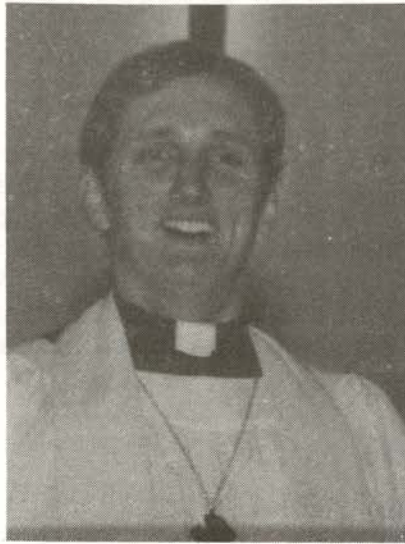


Rev. Russell Peterson  
Nov. 1969-Sept. 1975

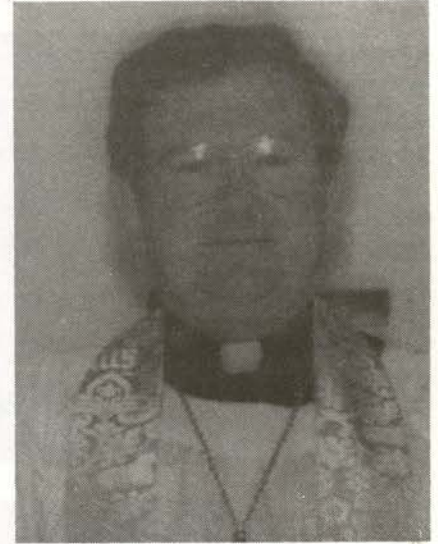




Rev. Terry L. Cashmer  
Dec. 1975-Aug. 1978



Rev. Monte Gusewelle  
Jan. 1979-Aug. 1982



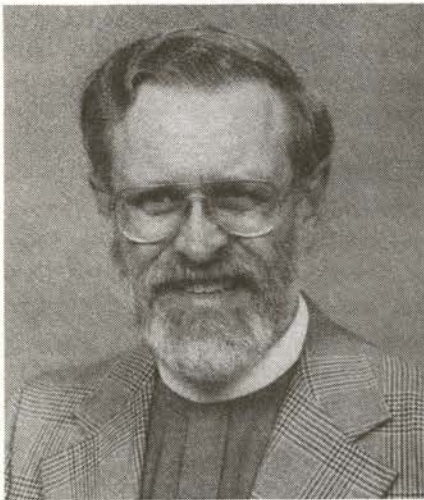
Rev. Dan Elkins  
Nov. 1982-Nov. 1989

### ***PASTORS THAT SERVED US DURING VACANCIES***

- Rev. Graef, 1906, Trinity, James
- Rev. Harvey Krueger, 1950, Our Savior's, Aberdeen
- Rev. W. J. Link, 1960, St. Paul's, Aberdeen
- Rev. Frank O. Solberg, 1965, St. John's, Britton
- Rev. Timothy Grassinger, 1969, St. John's, Columbia
- Rev. Edwin Rumerfield, 1975, Zion-St. Paul's, Andover-Ferney
- Rev. Victor Willman, 1978, St. John's, Britton
- Rev. Larry Johnson, 1982 and 1989, Zion, Waubay .

### ***OUR PASTOR TODAY***

"THE WORD OF THE LORD ENDURES FOREVER" 1 Peter 1:25



Rev. John T. P. Werner  
July 1990-

We praise God and give Him all glory and honor for sustaining this congregation for the past 100 years! God has continued to maintain His Word among us in spite of the devil's continuing attempts to destroy Christ's church.

It is God who through His Word and Spirit has sustained several generations of our people through the many hardships and trials which they have encountered over the years. It is God who has also blessed us with many physical and spiritual blessings year after year. As He has done, so He will continue to do for all who hold fast to Him through their faithful and frequent use of His Word and Sacrament, His precious means of grace! The world is constantly changing, but true to the promise of God, "The Word of the Lord endures forever!"

May we all therefore continue to read, mark, learn and inwardly digest God's Word at every opportunity, so that our faith may be preserved until the day our Lord calls us home. We pray that succeeding generations may also learn to hold God and His Word in the highest regard for as long as this earth and this congregation may continue.



**SONS & DAUGHTERS OF ST. JOHN'S WHO HAVE ANSWERED  
THE CALL TO SPECIAL SERVICE**



Elsa Erdmann Felten attended Valparaiso University, Valparaiso, IN for two years. She then went to Japan as a Prince of Peace volunteer in social work. She graduated from Valparaiso and now works with youth in her church in Evanston, IL. She and her husband, Doug, have two sons.



Mathilda Hinkelman Hemme graduated from Concordia College, Seward, Nebraska and taught in various Lutherans school in MO, MN, CA and WA. She continues her ministry as business manager at Seattle Lutheran High School. She and her husband, David, have three children.



Linda Baule Krienke, graduated from Concordia College, St. Paul, MN. She lives in Minnetonka, MN and teaches at St. Peter's Lutheran School, Edina, MN. She is married to Rev. Howie Krienke and they have four children.



Corey Nelson, graduated from Concordia College, Seward, NE with a BS in Elementary Education with a Mathematics Concentration. He will marry Brenda Pfeiffer June 18, 1993 and will teach fourth grade in St. Lorenz Lutheran, Frankenmuth, MI.

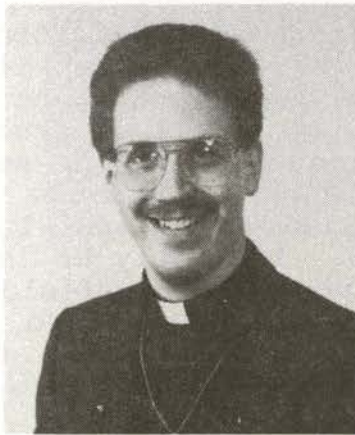




Terrance Borchard graduated from Concordia College, St. Paul, MN, Concordia Senior College, Ft. Wayne, IN, Concordia Seminary, St. Louis, MO, University of Texas, Arlington, TX, and Fuller Theological Seminary, Pasadena, CA. He presently serves as a consultant and teaches other Bible translators while continuing to translate the New Testament into the Ipili language in Papua, New Guinea. He and his wife, Kathy, have three daughters.



Carol Erdmann Dausch graduated from Valparaiso University, Valparaiso, IN and was Director of Youth Work at Church of our Savior, Baltimore, MD. She presently is Director of Education for the same church. Carol and her husband, Michael, have three children.



K. C. Dehning attended Concordia College, Seward, NE, and Concordia Theological Seminary, Ft. Wayne, IN. He was ordained at St. John's Lutheran, Groton. He vicared at Lincoln, NE and is now Pastor at St. Luke Lutheran Church, Wheaton, KS. He and his wife, Terri, have two daughters.



Terri Elkins Dehning attended Concordia College, Seward, NE, with a BS in Elementary Education. She has taught in several Lutheran schools. She and her husband, K.C., have two daughters and lives in Wheaton, KS.





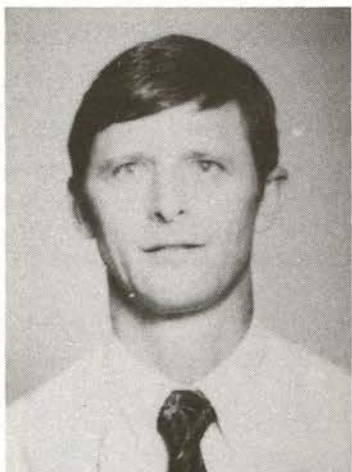
Janet Tullis Neff attended Concordia College, Seward, NE. She taught at Trinity Lutheran school in Bloomfield, NE and at Crippled Children's School, Jamestown, ND. She also taught experimental special education classroom in Richfield, MN. Presently she is the elementary principal at Langford, SD and lives in Claremont, SD. She and her husband, Ed, have two children.



David Olson graduated from Concordia Seminary, St. Louis, MO and the School of Social Work at WA University in St. Louis, MO. He was ordained at St. John's Lutheran, Groton. He served as Missionary at Large for the MO District and as associate pastor of Bethel Lutheran, St. Louis, MO. Presently, he is on leave from call. He served among other places as Director of Leadership Training, Kansas City, MO. He and his wife, Roberta have two sons and live in Overland Park, KS.



William A. Paepke graduated from Concordia College, St. Paul, MN, Concordia Senior College, Ft. Wayne, IN, and Concordia Seminary, St. Louis, MO. He was ordained at St. John's Lutheran, Groton. He served as pastor at St. John's Lutheran near Norris, SD and was Lutheran Campus Pastor at NSU, Aberdeen, SD. Presently he is the pastor at Trinity Lutheran, Mansfield, SD and St. Paul's Lutheran, Stratford, SD. He and his wife, Audrey, have three children.



John Rohwer attended Concordia College at St. Paul, MN, Fort Wayne, IN, and River Forest, IL. He returned to Concordia, St. Paul, MN to teach and coach. He also taught at the University of Wyoming, Laramie, WY, and obtained a doctoral degree from the University of Northern Colorado. He is now a professor at Bethel College, St. Paul, MN. He and his wife, Marletta, have two sons.

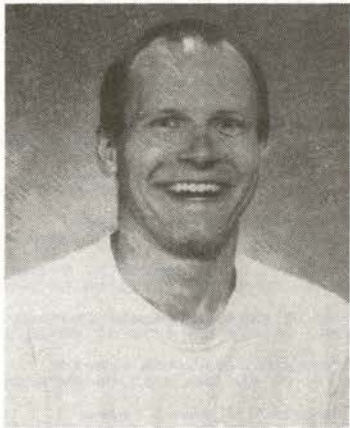




Paul Schornack was confirmed in Groton in 1903. He graduated from Concordia Seminary, St. Louis, MO and then served as Pastor of the church at Chester, SD for 46 years. He is now deceased.



Nikki Schuelke will be a senior this fall at Concordia University, River Forest, IL. She is in secondary education with a major in English and a minor in Human Performance. Her plans are to teach in one of our Synod's Lutheran high schools upon graduation in 1994.



Darren Sombke graduated from Concordia College, St. Paul, MN. He was a summer camp counselor at Walcamp in Kingston, IL and Minister of Youth at the Lutheran Church of St. Luke in Itasca, IL. He is now Director of Youth and Young Adults at Immanuel Lutheran Church in Belvidere, IL. He and his wife, Jung-ah, have one son.



Rebecca Werner has been attending Concordia College, Seward, NE for the past three years and two summers. She is majoring in Elementary Education with a concentration in Early Childhood Education, and a minor in English. Rebecca plans to graduate in May of 1994 with a BS in Education Degree, an Early Childhood Degree and a Lutheran Teacher's Diploma.



# BAPTISMS

**Emilie Kuntz**  
 BD 12/1/1891 BP 1891/12/27

**Jesse Funk**  
 BD 7/1/1892 BP 1892/11/13

**Bertha A. Schornack**  
 BD 3/24/1895 BP 1895/04/21

**Ida Paetznick**  
 BD 6/28/1896 BP 1896/12/20

**Esther Walter**  
 BD 2/24/1897 BP 1897/04/25

**Anton Frank**  
 BD 10/15/1897 BP 1897/11/08

**Mabel Friedrich**  
 BD 5/10/1898 BP 1898/06/17

**John C. Wolfe**  
 BD 9/5/1898 BP 1898/11/20

**Arthur E. Kuehnert**  
 BD 3/24/1899 BP 1899/04/23

**Sarene Hobus**  
 BD 10/28/1899 BP 1899/11/19

**Franz Paetznick**  
 BD 12/15/1899 BP 4/15/00

**Willie Raecke**  
 BD 6/10/00 BP 9/16/00

**Sheldon Wolfe**  
 BD 11/23/00 BP 12/16/00

**Emanuel Voight**  
 BD 2/16/02 BP 3/7/02

**Hermann Ziesmann**  
 BD 6/21/02 BP 7/16/02

**Ramona Erdmann**  
 BD 3/25/03 BP 5/15/03

**Clarence Quincer**  
 BD 7/28/03 BP 11/8/03

**Herman Rosenow**  
 BD 4/8/04 BP 4/24/04

**Luverna Gahl**  
 BD 4/22/04 BP 10/9/04

**Bertha Schmidt**  
 BD 10/19/04 BP 11/27/04

**Waldo Zimmerman**  
 BD 8/28/05 BP 9/17/05

**Elda Reinke**  
 BD 1/9/06 BP 3/11/06

**Hiepert Dahlke**  
 BD 4/13/06 BP 6/3/06

**Bernhardt Friedly**  
 BD 8/26/06 BP 5/28/07

**Lenora Spiess**  
 BD 5/15/07 BP 6/30/07

**Heinrich Reber**  
 BD 9/29/07 BP 12/29/07

**Arthur Senne**  
 BD 7/27/08 BP 8/2/08

**Arthur W. Kuehnert**  
 BD 12/14/08 BP 1/8/09

**Lillian Meng**  
 BD 4/28/09 BP 7/4/09

**Leona Kuehnert**  
 BD 11/28/09 BP 1/7/10

**Friedrich Schlichting**  
 BD 4/16/10 BP 4/17/10

**Wilma Heuer**  
 BD 2/28/11 BP 3/19/11

**Kenneth Van Bramer**  
 BD 8/2/11 BP 9/18/11

**Randall Jacobs**  
 BD 5/9/12 BP 6/2/12

**Phyllis Synoground**  
 BD 10/5/12 BP 11/24/12

**Gertrude Bulian**  
 BD 4/24/13 BP 9/14/13

**Cortland Kuehnert**  
 BD 2/11/14 BP 4/12/14

**Oscar Andersen**  
 BD 10/29/1891 BP 1892/01/31

**Martha Bahr**  
 BD 2/14/1894 BP 1894/05/20

**Fredrich Kuntz**  
 BD 1/4/1896 BP 1896/02/02

**Lydia Wockenfuss**  
 BD 12/10/1896 BP 1897/01/31

**Carl Ziesmann**  
 BD 2/25/1897 BP 1897/04/25

**Johann Kuntz**  
 BD 10/18/1897 BP 1897/11/08

**Clara Washnok**  
 BD 10/9/1897 BP 1898/06/26

**Emil Ziesmann**  
 BD 10/5/1898 BP 1898/11/20

**Wilmer Walter**  
 BD 3/23/1899 BP 1899/05/02

**Wilhelmina Schinkel**  
 BD 11/16/1899 BP 1899/11/21

**George Lestin**  
 BD 4/22/00 BP 4/23/00

**Ottomar Reinke**  
 BD 7/19/00 BP 9/30/00

**Alfred Paetznick**  
 BD 4/12/00 BP 12/30/00

**Alma Erdmann**  
 BD 2/16/02 BP 3/30/02

**Alfred U. Erdmann**  
 BD 10/12/02 BP 11/23/02

**Marguerite Bahr**  
 BD 5/20/03 BP 6/3/03

**Arthur Stange**  
 BD 12/21/03 BP 1/17/04

**Florence Fischer**  
 BD 4/21/04 BP 5/29/04

**Wilhelm Spratt**  
 BD 9/22/04 BP 10/30/04

**Beula Cross**  
 BD 4/24/04 BP 12/3/04

**Laverna Schweitzer**  
 BD 9/12/05 BP 10/29/05

**Alma Schmidt**  
 BD 1/17/06 BP 3/25/06

**Hulda Bahr**  
 BD 6/29/06 BP 7/12/06

**Florence Schweiger**  
 BD 3/21/07 BP 6/2/07

**Walther Stange**  
 BD 7/3/07 BP 7/14/07

**Walther Heuer**  
 BD 1/21/08 BP 2/16/08

**Wilhelm Ulrich**  
 BD 8/9/08 BP 10/18/08

**Lloyd Schinkel**  
 BD 10/4/08 BP 2/21/09

**Hazel Kaiser**  
 BD 6/18/09 BP 7/25/09

**Hazel Jost**  
 BD 11/30/05 BP 2/28/10

**Harold Niemeyer**  
 BD 6/17/10 BP 6/21/10

**Fred Jacobs**  
 BD 12/25/1887 BP 4/9/11

**Lillian Jost**  
 BD 11/25/11 BP 2/25/12

**Viola Erdmann**  
 BD 11/17/11 BP 6/3/12

**Floyd Young**  
 BD 10/20/12 BP 12/26/12

**Mattie Julson**  
 BD 11/5/13 BP 11/6/13

**Wallace McGrew**  
 BD 2/16/14 BP 5/24/14

**Edward Schulz**  
 BD 3/2/1891 BP 1892/03/13

**Hedwig Roeck**  
 BD 1/20/1895 BP 1895/03/17

**Christine Weihrach**  
 BD 10/14/1895 BP 1896/02/19

**Else Erdmann**  
 BD 1/4/1897 BP 1897/02/14

**Frieda Ziesmann**  
 BD 2/25/1897 BP 1897/04/25

**Margaret Erdmann**  
 BD 12/30/1897 BP 1898/01/30

**Lorine Schornack**  
 BD 8/4/1898 BP 1898/10/02

**Emil Roeck**  
 BD 11/8/1898 BP 1899/01/13

**Gustav Bahr**  
 BD 6/13/1899 BP 1899/06/29

**Elvina Erdmann**  
 BD 11/29/1899 BP 1/1/00

**Walter Fischer**  
 BD 4/28/00 BP 5/13/00

**Lydia Voight**  
 BD 11/17/00 BP 12/2/00

**Walter Meng**  
 BD 8/6/01 BP 9/8/01

**Otto Dahlke**  
 BD 9/20/01 BP 5/18/02

**Lorna Gengerke**  
 BD 12/10/02 BP 1/18/03

**Hazel Rohwer**  
 BD 2/21/03 BP 6/14/03

**Ernest Zimmerman**  
 BD 12/28/03 BP 1/17/04

**Francis Fischer**  
 BD 4/21/04 BP 5/29/04

**Gertrude Erdmann**  
 BD 10/28/04 BP 11/20/04

**Mabel Quincer**  
 BD 3/1/05 BP 4/16/05

**Gordon Schinkel**  
 BD 9/14/05 BP 2/11/06

**John Anderson**  
 BD 9/11/03 BP 6/3/06

**Emma Engstrom**  
 BD 8/14/06 BP 9/30/06

**Della Urban**  
 BD 3/17/07 BP 6/2/07

**Clifford Meng**  
 BD 5/15/07 BP 8/11/07

**Elizabeth Erdmann**  
 BD 2/5/08 BP 3/1/08

**Ruby Stewart**  
 BD 8/14/07 BP 11/30/08

**Wesley Snell**  
 BD 2/6/09 BP 4/7/09

**Ora Erdmann**  
 BD 6/10/09 BP 8/15/09

**Louise Jost**  
 BD 9/11/07 BP 2/28/10

**August Bulian**  
 BD 12/3/10 BP 12/27/10

**Murdes Gengerke**  
 BD 4/13/11 BP 5/14/11

**Heinrich Mundt**  
 BD 9/21/11 BP 3/3/12

**Lawrence Rohwer**  
 BD 4/19/12 BP 6/30/12

**Emma Heuer**  
 BD 2/4/13 BP 2/16/13

**Woodrow Knoll**  
 BD 9/19/13 BP 11/27/13

**Ervin Ulrich**  
 BD 3/25/14 BP 6/21/14

**Martha Walter**  
 BD 10/3/1892 BP 1892/11/06

**Olga Walter**  
 BD 1/25/1895 BP 1895/03/31

**Lydia Koepsel**  
 BD 8/3/1896 BP 1896/08/23

**Seth Wolfe**  
 BD 3/5/1897 BP 1897/04/20

**Frances Schornack**  
 BD 7/21/1897 BP 1897/08/29

**Ora E. Erdmann**  
 BD 3/27/1898 BP 1898/05/15

**Elizabeth Seehafer**  
 BD 8/5/1898 BP 1898/10/14

**Heinrick Paetznick**  
 BD 10/30/1898 BP 1899/03/30

**Heinrich Kuntz**  
 BD 8/7/1899 BP 1899/10/08

**Amanda Erdmann**  
 BD 3/23/00 BP 4/5/00

**Wilhelm L. Wockenfuss**  
 BD 7/26/00 BP 8/26/00

**Bertha Frank**  
 BD 11/22/00 BP 12/16/00

**Bertha Walter**  
 BD 12/9/01 BP 1/5/02

**Erwin Reinke**  
 BD 4/12/02 BP 6/15/02

**Gilbert Erdmann**  
 BD 1/28/03 BP 3/27/03

**Mildred Schweitzer**  
 BD 9/21/03 BP 9/26/03

**Hildegard Urban**  
 BD 3/7/04 BP 4/4/04

**Frederich Lafily**  
 BD 5/13/04 BP 6/26/04

**Ora Walther**  
 BD 10/16/04 BP 11/24/04

**Esther Rohwer**  
 BD 3/4/05 BP 7/16/05

**Ruth Urban**  
 BD 2/6/06 BP 2/18/06

**Mary Anderson**  
 BD 1/14/02 BP 6/3/06

**Erna Walther**  
 BD 12/19/06 BP 1/4/07

**Margaret B. Rohwer**  
 BD 11/23/06 BP 6/30/07

**Margareta Paetznick**  
 BD 8/30/07 BP 10/6/07

**Martin Schmidt**  
 BD 2/12/08 BP 4/14/08

**Pearl Leise**  
 BD 12/25/07 BP 12/13/08

**Eva Schweiger**  
 BD 11/16/08 BP 4/25/09

**Elmer Urban**  
 BD 12/13/09 BP 12/18/09

**Pearl Jost**  
 BD 9/20/09 BP 2/28/10

**Harold Rosenow**  
 BD 1/14/11 BP 2/5/11

**Dale Snell**  
 BD 10/3/10 BP 6/8/11

**Herbert Senne**  
 BD 3/13/12 BP 3/24/12

**Murillo Kishner**  
 BD 6/29/12 BP 11/24/12

**Bertha Reinke**  
 BD 6/20/13 BP 7/3/13

**Esther Warner**  
 BD 8/15/13 BP 12/21/13

**Dorothea Scroggins**  
 BD 6/2/14 BP 7/19/14



## BAPTISMS

Mabel Jost  
BD 3/2/14 BP 10/11/14

Arnold Erdmann  
BD 3/4/15 BP 4/4/15

Cylpha Mahan  
BD 6/26/15 BP 8/8/15

Lois Knight  
BD 9/11/15 BP 10/10/15

Joseph Jost  
BD 6/29/16 BP 8/6/16

Ralph Karnopp  
BD 1/2/17 BP 1/4/17

Orville Tosch  
BD 9/13/17 BP 10/7/17

Eugene Kurtz  
BD 1/13/18 BP 3/10/18

Elbertha Schmidt  
BD 8/17/1897 BP 1/4/19

Alvin Hornemann  
BD 5/7/19 BP 6/22/19

Leonard Pasch  
BD 12/14/18 BP 1/7/20

Wallace Peterson  
BD 3/1/20 BP 4/11/20

Kenneth Crossman  
BD 9/12/20 BP 10/10/20

Louis Krueger  
BD 2/1/19 BP 5/1/21

Claribel Quincer  
BD 2/27/21 BP 8/28/21

Beverly Schmidt  
BD 4/6/22 BP 4/22/22

Robert Schuelke  
BD 3/11/23 BP 3/25/23

Selma Breitreutz  
BD 6/15/23 BP 8/19/23

Helen Schuelke  
BD 9/22/24 BP 9/27/24

Ardyth Hartkrueger  
BD 12/31/24 BP 1/14/25

Loris Kurtz  
BD 6/20/25 BP 7/19/25

James Wockenfuss  
BD 7/28/25 BP 9/13/25

Verril Radke  
BD 3/13/26 BP 4/18/26

Mabel Sippel  
BD 10/4/22 BP 7/18/26

Belva Badten  
BD 10/14/26 BP 11/3/26

Morris Nehls  
BD 9/14/26 BP 12/5/26

Raymond Beets  
BD 12/20/25 BP 5/22/27

Christoph Kurts  
BD 4/13/27 BP 10/31/27

Lucinda Sindt  
BD 11/5/27 BP 12/13/27

Betty Hoops  
BD 2/22/28 BP 3/4/28

Darlene Von Wald  
BD 7/6/27 BP 11/25/28

Renee Strom  
BD 12/25/28 BP 1/31/29

Darleen Herron  
BD 2/3/29 BP 9/15/29

Dorothy Schinkel  
BD 1/26/30 BP 1/26/30

Curtis Wockenfuss  
BD 1/14/30 BP 6/1/30

Marilyn May  
BD 10/2/29 BP 8/24/30

Christ Knoll  
BD 5/28/29 BP 8/30/30

Wyla Schaller  
BD 3/16/27 BP 8/30/30

Irma Tosch  
BD 9/21/14 BP 10/18/14

Rosella Heuer  
BD 5/19/15 BP 6/6/15

Maurice Mahan  
BD 3/30/10 BP 8/8/15

Howard Schornack  
BD 10/20/15 BP 11/7/15

Gale Buchanan  
BD 3/25/16 BP 8/27/16

Charles DeKlyen  
BD 1/10/16 BP 2/23/17

Hellen Frank  
BD 10/9/17 BP 11/1/17

Robert Jacobs  
BD 4/10/18 BP 5/12/18

Richard Crossman  
BD 3/5/19 BP 4/9/19

Irene Osman  
BD 6/17/19 BP 8/3/19

Doris Kurtz  
BD 10/29/19 BP 1/15/20

Everett Holcomb  
BD 12/21/19 BP 5/9/20

Heinrich G. Wagner  
BD 2/3/20 BP 2/6/21

Deloris Hartkrueger  
BD 4/12/21 BP 6/10/21

Rose Knittel  
BD 6/4/19 BP 10/9/21

Loraine Koehler  
BD 7/10/22 BP 8/27/22

Lenora Lauruhn  
BD 11/6/22 BP 4/4/23

Betty DeKlyen  
BD 4/22/22 BP 3/2/24

Herbert Wockenfuss  
BD 10/18/24 BP 11/14/24

Donald Bradshaw  
BD 10/15/22 BP 1/22/25

LaVanda Radke  
BD 7/14/24 BP 8/24/25

Shirley Dickinson  
BD 5/17/25 BP 11/1/25

Erna Wockenfuss  
BD 3/31/26 BP 5/12/26

Marie Sippel  
BD 2/17/25 BP 7/18/26

Floyd Frazier  
BD 12/12/21 BP 11/11/26

Beverly Dickinson  
BD 8/9/26 BP 1/16/27

Elsie Hasemann  
BD 5/5/27 BP 6/19/27

Lola Peterson  
BD 10/24/27 BP 11/24/27

Allen Schuelke  
BD 11/26/27 BP 1/15/28

Hans Hoops  
BD 9/12/27 BP 5/9/28

Dorothy Von Wald  
BD 7/6/28 BP 11/25/28

Elizabeth Miles  
BD 1/24/28 BP 6/16/29

Glenn L. Peterson  
BD 8/16/29 BP 9/15/29

Dora Zumm  
BD 12/18/29 BP 2/28/30

Gerald Krueger  
BD 3/10/30 BP 7/6/30

Grace Hollis  
BD 1/3/17 BP 8/30/30

Darrel Knoll  
BD 12/17/26 BP 8/30/30

Myron Schaller  
BD 7/19/16 BP 8/30/30

Verena Reinke  
BD 9/22/14 BP 10/30/14

Alvin Knoll  
BD 5/12/15 BP 7/4/15

Elva McGrew  
BD 7/19/15 BP 8/22/15

Ora Schuelke  
BD 11/17/15 BP 11/28/15

Phyllis Jacobs  
BD 7/29/16 BP 8/27/16

Ruth Koehn  
BD 4/25/17 BP 6/24/17

Laurine Senne  
BD 11/17/17 BP 12/16/17

Rubie Hartkrueger  
BD 9/7/18 BP 10/6/18

Joyce Jacobs  
BD 4/28/19 BP 5/25/19

Doris Schornack  
BD 8/26/19 BP 9/28/19

Marvin Luke  
BD 1/4/20 BP 3/28/20

Ella Jost  
BD 11/14/19 BP 5/9/20

Ethel Erdmann  
BD 10/13/01 BP 4/3/21

Harold Wattier  
BD 4/16/21 BP 6/12/21

Dale Krueger  
BD 6/8/21 BP 10/9/21

Henry Wockenfuss Jr.  
BD 8/6/22 BP 9/3/22

Floyd Erdmann  
BD 3/26/23 BP 4/8/23

Alan Wockenfuss  
BD 5/25/24 BP 6/15/24

Marlys Radke  
BD 10/26/24 BP 12/14/24

Marvin Bradshaw  
BD 2/1/20 BP 1/22/25

Evelyn Fischer  
BD 12/2/23 BP 9/13/25

Russell Koehler  
BD 9/16/25 BP 11/1/25

Allen Amsden  
BD 12/29/25 BP 5/16/26

Allene Meister  
BD 5/23/26 BP 7/25/26

John Frazier  
BD 9/3/26 BP 11/11/26

Carl Zumm  
BD 7/12/26 BP 1/24/27

Betty May  
BD 6/19/27 BP 8/7/27

Phyllis Radke  
BD 9/11/27 BP 11/27/27

Eva Inglis Radke  
BD 12/29/05 BP 2/6/28

Donna Cowan  
BD 5/17/28 BP 7/11/28

Mary Ann Nehls  
BD 8/20/28 BP 12/3/28

William Radke  
BD 11/28/28 BP 8/9/29

Mildred Radke  
BD 10/29/29 BP 10/29/29

George Schmidt  
BD 2/24/30 BP 3/23/30

Helen Jones  
BD 6/15/30 BP 7/20/30

Maxine Hollis  
BD 9/26/21 BP 8/30/30

Eileen Knoll  
BD 2/7/24 BP 8/30/30

Orville Schaller  
BD 9/3/28 BP 8/30/30

Harold Schornack  
BD 11/15/14 BP 11/26/14

Maurice Osman  
BD 5/29/15 BP 7/4/15

Argyle Knight  
BD 11/13/12 BP 10/10/15

Marvin Gengerke  
BD 11/27/15 BP 1/16/16

Lois Van Bramer  
BD 6/1/16 BP 8/27/16

Donald Synoground  
BD 4/30/17 BP 7/22/17

Lorna Seefeld  
BD 12/20/17 BP 1/19/18

Lyle Schuelke  
BD 11/9/18 BP 11/28/18

Kenneth Schmidt  
BD 4/17/19 BP 5/25/19

Myrtle Seefeld  
BD 10/21/19 BP 12/21/19

Darrell Peterson  
BD 10/12/19 BP 4/11/20

Wilhelm C. Schaller  
BD 6/19/20 BP 7/25/20

Mary Jones  
BD 3/19/21 BP 5/1/21

Norman Wockenfuss  
BD 8/5/21 BP 8/21/21

Mabel Wockenfuss  
BD 5/30/1899 BP 4/2/22

Walter Hartkrueger  
BD 8/9/22 BP 9/30/22

Betty Herron  
BD 6/21/23 BP 8/5/23

Elerona Zumm  
BD 11/27/23 BP 8/31/24

Howard Jones  
BD 11/10/24 BP 1/7/25

Orla Lauruhn  
BD 9/4/24 BP 3/25/25

Gladys Fischer  
BD 10/28/21 BP 9/13/25

Gerald May  
BD 7/18/25 BP 12/27/25

Ralph Schmidt  
BD 3/22/26 BP 5/29/26

Dorothy Herron  
BD 7/11/26 BP 9/13/26

William Lauruhn  
BD 8/24/26 BP 11/28/26

Rolande Stange  
BD 2/8/27 BP 3/15/27

Robert Bradshaw  
BD 9/20/27 BP 9/25/27

Duane Schmidt  
BD 9/27/27 BP 11/28/27

Phyllis Erdmann  
BD 12/18/27 BP 3/4/28

John Hoops  
BD 8/15/28 BP 9/9/28

Gordon Roscoe  
BD 12/20/28 BP 1/6/29

Constance Herron  
BD 6/3/20 BP 9/15/29

Marion Schinkel  
BD 9/3/29 BP 12/15/29

Delbert Holler  
BD 5/20/28 BP 4/5/30

Joan Holler  
BD 8/19/30 BP 8/19/30

Alvina Knoll  
BD 12/6/21 BP 8/30/30

Kenneth Schaller  
BD 6/11/26 BP 8/30/30

Otho Schaller  
BD 4/5/19 BP 8/30/30



## BAPTISMS

Walter Schaller BD 10/4/24 BP 8/30/30	Helen Knoll BD 10/21/29 BP 9/18/30	Richard Wagner BD 7/30/30 BP 9/21/30	Clair Cowan BD 11/14/29 BP 10/21/30
Russell Ellingson BD 6/13/30 BP 11/30/30	Gerald Paetznick BD 11/14/30 BP 11/30/30	Darlene Graves BD 8/20/30 BP 12/3/30	Delores Hoops BD 6/25/30 BP 2/1/31
Gwendolyn Meister BD 2/12/31 BP 4/5/31	Allan Schornack BD 4/6/31 BP 5/3/31	Roy Strom BD 7/2/31 BP 8/29/31	Lloyd Anderson BD 11/15/29 BP 9/20/31
Arlene Ellingson BD 6/12/31 BP 9/26/31	Naoma Stange BD 1/20/32 BP 2/28/32	Russel Thiemann BD 5/20/32 BP 9/11/32	Karry Inglis BD 10/18/12 BP 10/18/32
Marie Inglis BD 4/5/15 BP 10/18/32	Doris Erdmann BD 7/5/18 BP 11/3/32	Marvin S. Erdmann BD 4/7/17 BP 11/3/32	Henry Schultz BD 8/20/32 BP 11/6/32
Norma Cowan BD 3/23/32 BP 11/8/32	JoAnne Hoops BD 6/16/32 BP 11/8/32	Robert Holtz BD 8/12/03 BP 11/10/32	Ruth Reinhardt BD 8/23/32 BP 11/20/32
Jerrold Koehler BD 7/24/31 BP 11/27/32	Lorraine Reinhardt BD 7/24/32 BP 12/26/32	Beverly Erdmann BD 9/20/20 BP 2/20/33	Mabel Erdmann BD 8/24/1898 BP 2/20/33
Max Bahr BD 12/18/31 BP 2/21/33	Phyllis Bahr BD 3/29/29 BP 2/21/33	Gerald Boehmer BD 1/4/33 BP 4/4/33	LaVon Boehmer BD 6/1/29 BP 4/4/33
Marjorie Boehmer BD 6/18/31 BP 4/4/33	Jacque Hoy BD 8/6/32 BP 4/12/33	Marlys Schmidt BD 9/5/33 BP 9/17/33	Ardis Schuelke BD 7/29/33 BP 2/11/34
Helen Obermeyer BD 12/8/33 BP 2/20/34	Adeline Kroll BD 2/9/31 BP 3/3/34	Walter Kroll BD 8/2/33 BP 3/3/34	Peggy Holler BD 12/2/33 BP 3/18/34
Donald May BD 6/10/33 BP 4/1/34	Beverly Bahr BD 12/11/33 BP 6/30/34	Berdeen Hoops BD 2/21/34 BP 6/30/34	Gloria Lenling BD 7/28/34 BP 8/12/34
Myrna Paetznick BD 6/30/34 BP 8/12/34	Joyce Kroll BD 12/5/34 BP 1/9/35	Janice Holler BD 1/1/35 BP 2/24/35	Deloris Bingen BD 11/19/24 BP 3/1/35
Dorothy Bingen BD 12/30/21 BP 3/1/35	Kenneth Bingen BD 5/23/20 BP 3/1/35	Marcella Van Ripper BD 5/28/18 BP 3/4/35	Floyd Neuman BD 3/28/35 BP 4/28/35
Alvin Bahr BD 6/5/35 BP 6/10/35	Gary Krueger BD 3/7/35 BP 7/14/35	Harrold L. Reinhardt BD 5/27/35 BP 7/15/35	Richard Rossow BD 7/30/35 BP 9/1/35
Floyd Leonhardt BD 9/19/35 BP 10/27/35	Helmuth H. Paetznick BD 10/7/35 BP 12/15/35	Dorothy Hoops BD 11/7/18 BP 12/23/35	Lois Hoops BD 10/14/23 BP 12/23/35
Kay Stroh BD 3/31/36 BP 4/30/36	Clifford Lenling BD 4/10/36 BP 5/2/36	Joy Feller BD 3/14/36 BP 6/7/36	Billie Keup BD 12/19/35 BP 6/18/36
Lois Strom BD 6/21/36 BP 8/19/36	Carroll Nehls BD 10/12/35 BP 9/13/36	Robert Knoll BD 12/1/36 BP 1/11/37	Mae Knoll BD 5/24/15 BP 2/27/37
Deloris Sombke BD 2/1/37 BP 3/18/37	Pamela Mielke BD 12/28/36 BP 4/18/37	Charles Raap BD 4/16/33 BP 4/18/37	Joan Raap BD 12/28/31 BP 4/18/37
Prudence Harvey BD 3/28/37 BP 5/29/37	Rose Neldon BD 2/23/37 BP 5/30/37	Marilyn Clocksene BD 1/31/37 BP 6/6/37	Janis Feller BD 6/17/37 BP 8/29/37
Wayne Ebert BD 7/28/37 BP 9/10/37	Donna Holler BD 11/12/30 BP 11/13/37	Arlene Schaller BD 11/13/35 BP 11/13/37	Benjamin Schaller BD 1/13/32 BP 11/13/37
James Pasch BD 9/9/37 BP 12/10/37	Otto E. Schinkel BD 11/10/37 BP 1/1/38	Myrtle Nehls BD 6/7/1885 BP 3/23/38	Nellie Ried BD 4/9/1884 BP 3/23/38
Roy Simpson BD 1/31/16 BP 3/23/38	Ronald Nehls BD 11/24/36 BP 5/29/38	Wilma Anderson BD 3/3/38 BP 7/9/38	Clarice Neumann BD 8/23/38 BP 9/8/38
Dale Jensen BD 5/8/38 BP 10/30/38	Beverly Olson BD 1/4/28 BP 11/7/38	Phyllis Olson BD 11/18/24 BP 11/7/38	Shirley Olson BD 1/7/26 BP 11/7/38
Lorine Leonhardt BD 9/11/38 BP 12/11/38	Donald Stroh BD 11/24/38 BP 12/29/38	Marlene Schuelke BD 7/9/35 BP 2/22/39	Gary Inglis BD 3/15/39 BP 5/15/39
Gilbert Hinkelman BD 6/30/39 BP 8/20/39	Robert Kurschat BD 6/11/39 BP 9/17/39	Janice Clouse BD 6/6/39 BP 11/11/39	Gerald Lakemaker BD 12/28/39 BP 2/4/40
Arlis Strom BD 12/20/39 BP 2/25/40	Arlone Christman BD 2/26/26 BP 4/8/40	Virginia Harms BD 10/13/22 BP 4/8/40	Goldie Meyers BD 3/17/24 BP 4/8/40
Linda Schuelke BD 7/8/40 BP 8/25/40	Verne McCullough BD 11/14/18 BP 9/8/40	Rochelle Reber BD 9/14/39 BP 9/14/40	Paula Erdmann BD 7/23/40 BP 9/29/40
Margaret Reinhardt BD 4/11/41 BP 5/25/41	Roberta Krueger BD 2/6/41 BP 6/22/41	Steven Thurston BD 6/30/41 BP 7/20/41	Karen Tuthill BD 7/7/41 BP 8/25/41
Lambert Mielke BD 8/2/41 BP 9/14/41	Larry Knoll BD 9/22/38 BP 11/14/41	Joan Rohwer BD 11/1/41 BP 12/21/41	Wayne Knoll BD 6/21/41 BP 1/16/42
Bonnie Schaller BD 9/14/38 BP 1/16/42	Gayleen Reber BD 2/9/41 BP 1/18/42	Berdette Craig BD 2/7/42 BP 4/5/42	William Kurschat BD 5/4/42 BP 6/14/42
Gregory McCullough BD 3/9/42 BP 6/14/42	Geneva Hollenbeck BD 7/13/26 BP 7/19/42	Judith Lehman BD 10/12/42 BP 11/2/42	Ronald Mielke BD 10/24/42 BP 1/14/43
Dennis Hassenpflug BD 2/20/43 BP 4/6/43	Wayne Jensen BD 5/23/43 BP 5/25/43	Larry Schliebe BD 5/30/43 BP 7/18/43	Arthur Anderson BD 4/7/39 BP 7/23/43
Jack Anderson BD 7/9/42 BP 7/23/43	Sharon Anderson BD 8/2/42 BP 7/23/43	Dianne Simpson BD 9/7/43 BP 10/10/43	David Feller BD 8/12/43 BP 12/25/43
Carole Thurston BD 12/8/43 BP 1/9/44	Dennis Larson BD 11/3/43 BP 4/26/44	Russell Erdmann BD 11/2/43 BP 5/24/44	Mathilda Hinkelman BD 4/28/44 BP 6/4/44
Gary Nehls BD 4/30/43 BP 6/7/44	Stanley Dorsey BD 5/20/44 BP 9/10/44	William J. Schaller BD 9/6/44 BP 10/22/44	Betty Martin BD 12/17/43 BP 12/17/44
Cheryl Schliebe BD 11/21/44 BP 12/17/44	Nadine Sager BD 11/29/44 BP 1/14/45	Gerald Lehman BD 1/5/45 BP 1/23/45	Bette Sombke BD 2/1/45 BP 6/6/45
Nancy Bahr BD 1/1/45 BP 6/10/45	Arthur Gengerke BD 6/21/45 BP 7/29/45	Larry Pigors BD 6/16/45 BP 7/29/45	Sheldon Gross BD 6/21/45 BP 9/26/45
David McCullough BD 5/24/45 BP 10/21/45	Barbara Kolb BD 6/8/45 BP 1/20/46	John Kolb BD 11/15/41 BP 1/20/46	Darrell Flielhs BD 2/1/46 BP 5/19/46



# BAPTISMS

**Karon Keup**  
 BD 3/20/46 BP 5/19/46

**Judy Rohwer**  
 BD 9/11/46 BP 11/10/46

**Evelyn Gengerke**  
 BD 1/30/47 BP 3/2/47

**Jane Mielke**  
 BD 4/26/47 BP 6/22/47

**Rodney Ellingson**  
 BD 11/19/47 BP 1/4/48

**Diane Flihs**  
 BD 3/10/48 BP 5/30/48

**David Meyers**  
 BD 4/16/48 BP 9/26/48

**James Schuelke**  
 BD 1/9/49 BP 1/30/49

**David Krueger**  
 BD 4/4/49 BP 5/7/49

**Sharon Richardt**  
 BD 6/16/49 BP 11/20/49

**Diane Schornack**  
 BD 7/23/50 BP 10/8/50

**Robert Meister**  
 BD 12/12/42 BP 11/1/50

**Arlen Keup**  
 BD 1/8/51 BP 2/25/51

**David Wagner**  
 BD 3/10/51 BP 4/15/51

**Bonnie Herr**  
 BD 9/4/51 BP 5/13/51

**Sandra Schaller**  
 BD 4/18/51 BP 7/24/51

**Jacquelin Alldridge**  
 BD 10/12/44 BP 8/3/51

**Linda Nehls**  
 BD 5/25/51 BP 9/15/51

**Terrence Stange**  
 BD 9/6/51 BP 10/28/51

**Marsha Erdmann**  
 BD 5/31/51 BP 2/3/52

**Betty Rehfuss**  
 BD 3/4/52 BP 3/30/52

**Darwin Flihs**  
 BD 3/12/52 BP 5/25/52

**Patricia Flihs**  
 BD 7/19/52 BP 8/24/52

**Robert Hoops**  
 BD 9/18/47 BP 10/23/52

**Dean Karnopp**  
 BD 11/25/52 BP 12/14/52

**John C. Knoll**  
 BD 4/2/53 BP 5/17/53

**John V. Nehls**  
 BD 1/11/52 BP 8/11/53

**Alroy Pasch**  
 BD 9/9/53 BP 9/15/53

**Carol Markley**  
 BD 10/8/53 BP 11/22/53

**Douglas Hoops**  
 BD 1/9/54 BP 4/4/54

**Leonard Jack Schmidt**  
 BD 8/24/46 BP 5/19/54

**Carolyn Blankenberg**  
 BD 6/5/54 BP 7/4/54

**Janet Rohwer**  
 BD 10/9/54 BP 10/31/54

**Ronald Jensen**  
 BD 11/17/54 BP 3/6/55

**Walter Blondo**  
 BD 5/21/55 BP 8/7/55

**Shirley Gengerke**  
 BD 10/16/55 BP 11/6/55

**Winifred Schuelke**  
 BD 8/18/18 BP 1/24/56

**William H. Neitzel**  
 BD 10/7/50 BP 4/29/56

**Gerald Schwarting**  
 BD 6/18/46 BP 8/11/46

**Mary Ann Sippel**  
 BD 10/6/46 BP 11/10/46

**Rilla Keup**  
 BD 11/3/43 BP 4/6/47

**Larry Abraham**  
 BD 7/30/47 BP 8/22/47

**Ronald Rehfuss**  
 BD 2/11/48 BP 4/11/48

**Marilyn Schaller**  
 BD 2/18/48 BP 6/6/48

**William Schuelke**  
 BD 7/27/48 BP 9/26/48

**Cynthia Kolb**  
 BD 1/24/49 BP 4/3/49

**Timothy Schliebe**  
 BD 6/20/49 BP 7/17/49

**Richard Karnopp**  
 BD 3/6/50 BP 3/28/50

**Stanley Herr**  
 BD 8/16/47 BP 11/1/50

**Terry Meister**  
 BD 1/14/48 BP 11/1/50

**Marsha Neumann**  
 BD 1/26/51 BP 3/11/51

**Patsy Kolb**  
 BD 3/3/51 BP 4/22/51

**Joy Markley**  
 BD 10/17/50 BP 5/20/51

**Dennis Alldridge**  
 BD 2/15/49 BP 8/3/51

**Erma Alldridge**  
 BD BP 8/12/51

**Marlene Nehls**  
 BD 9/18/49 BP 9/15/51

**Norman Gengerke**  
 BD 10/4/51 BP 11/25/51

**Jeanette Flihs**  
 BD 9/30/51 BP 2/17/52

**John Nissen**  
 BD 3/24/37 BP 4/6/52

**David Lorenz**  
 BD 5/2/52 BP 6/15/52

**Peggy Schornack**  
 BD 6/8/52 BP 8/24/52

**Jacky McKiver**  
 BD 4/1/52 BP 11/9/52

**Elaine Schuelke**  
 BD 12/2/52 BP 1/7/53

**Katherine Hoops**  
 BD 4/1/53 BP 5/24/53

**Della Udelhofen**  
 BD 4/20/39 BP 9/13/53

**Elaine Rose**  
 BD 9/12/53 BP 9/20/53

**Gale Grundmeier**  
 BD 11/19/53 BP 12/6/53

**James Lorenz**  
 BD 2/23/54 BP 4/11/54

**Melanie Schliebe**  
 BD 6/9/54 BP 6/27/54

**Candice Sombke**  
 BD 5/28/54 BP 7/11/54

**Dale Flihs**  
 BD 11/8/54 BP 12/5/54

**Jerold Nissen**  
 BD 5/28/54 BP 3/6/55

**Debra Danielson**  
 BD 7/14/55 BP 8/14/55

**Deborah Herron**  
 BD 11/12/55 BP 11/14/55

**Debra L. Neitzel**  
 BD 10/31/51 BP 4/29/56

**Paula K. Krueger**  
 BD 7/5/56 BP 8/19/56

**Dale Simpson**  
 BD 4/5/45 BP 10/28/46

**Michael Wagner**  
 BD 11/23/46 BP 12/22/46

**Terry Keup**  
 BD 6/6/46 BP 4/6/47

**Lana Duenow**  
 BD 9/9/47 BP 10/26/47

**Clyde Neuman**  
 BD 3/20/48 BP 4/25/48

**Sharon Kolb**  
 BD 3/18/48 BP 6/13/48

**Neil Wagner**  
 BD 7/25/48 BP 11/7/48

**Michael Lorenz**  
 BD 2/0/49 BP 4/10/49

**Jacqueline Neitzel**  
 BD 8/8/49 BP 9/11/49

**Roxanne Schuelke**  
 BD 3/22/50 BP 5/14/50

**Dale Meister**  
 BD 1/31/44 BP 11/1/50

**Barbara Craig**  
 BD 8/30/50 BP 12/10/50

**Andrea Gross**  
 BD 4/28/48 BP 3/26/51

**Linda Herron**  
 BD 1/23/51 BP 4/29/51

**Gary Flihs**  
 BD 9/24/50 BP 6/3/51

**Gale Alldridge**  
 BD 4/2/46 BP 8/3/51

**Vernon Alldridge**  
 BD BP 8/12/51

**Gary Hoops**  
 BD 7/26/51 BP 9/23/51

**Russell Schaller**  
 BD 10/26/51 BP 11/25/51

**Lillian Wagner**  
 BD 10/31/51 BP 3/16/52

**Shirley Morse**  
 BD 11/24/51 BP 4/20/52

**Leland Christian**  
 BD 12/6/19 BP 7/1/52

**Edward Stauch**  
 BD 5/5/42 BP 9/16/52

**Robert Pasch**  
 BD 7/26/52 BP 11/12/52

**Richard Meyers**  
 BD 1/15/53 BP 3/8/53

**Lorin Flihs**  
 BD 2/5/53 BP 6/7/53

**Ray Udelhofen**  
 BD 8/18/41 BP 9/13/53

**Joseph Podrabsky**  
 BD 1/13/53 BP 10/4/53

**Deanne Dombrowe**  
 BD 9/3/53 BP 12/20/53

**Steven Schaller**  
 BD 12/10/53 BP 4/11/54

**Richard Ahern**  
 BD 5/8/54 BP 6/30/54

**Mary Ellen Ter Meer**  
 BD 2/24/54 BP 10/3/54

**Charles Kolb**  
 BD 10/13/54 BP 12/12/54

**Gloria McKiver**  
 BD 3/2/55 BP 6/12/55

**Robert Lorenz**  
 BD 7/29/55 BP 9/25/55

**Ronald R. Crawford**  
 BD 10/14/55 BP 12/7/55

**Michael D. Neitzel**  
 BD 10/21/55 BP 4/29/56

**Steven K. Wagner**  
 BD 8/3/56 BP 9/9/56

**John Rohwer**  
 BD 9/11/46 BP 11/10/46

**Carolyn Pigors**  
 BD 12/27/46 BP 1/19/47

**Norma Richardt**  
 BD 11/24/45 BP 5/3/47

**Roger Krueger**  
 BD 11/16/47 BP 12/14/47

**Norma Jensen**  
 BD 3/3/48 BP 5/9/48

**Jean Koehler**  
 BD 7/24/31 BP 7/25/48

**Carol Craig**  
 BD 8/6/48 BP 11/14/48

**Brenda Pigors**  
 BD 3/23/49 BP 4/17/49

**Bradford Pigors**  
 BD 11/3/49 BP 11/13/49

**Martin Sippel**  
 BD 5/28/50 BP 9/10/50

**Marion Meister**  
 BD 10/19/46 BP 11/1/50

**Timothy Meyers**  
 BD 9/28/50 BP 12/17/50

**Sharman Gross**  
 BD 7/10/49 BP 3/26/51

**William McKiver**  
 BD 3/18/51 BP 4/29/51

**Linda Goss**  
 BD 12/22/49 BP 7/9/51

**Gwendolyn Alldridge**  
 BD 6/28/47 BP 8/3/51

**Borden Meyers**  
 BD 9/9/20 BP 8/12/51

**Edith Krueger**  
 BD 9/3/51 BP 9/30/51

**Susan Knoll**  
 BD 11/27/51 BP 12/23/51

**Michael Ahern**  
 BD 3/10/52 BP 3/17/52

**Jane Angerhofer**  
 BD 3/11/52 BP 5/18/52

**Jon Sombke**  
 BD 6/17/52 BP 8/17/52

**Karen Hoops**  
 BD 11/28/51 BP 10/23/52

**Barbara Nehls**  
 BD 11/3/40 BP 11/25/52

**Clarence Georgens**  
 BD 2/1/08 BP 3/15/53

**Wallace Ahern**  
 BD 4/26/53 BP 6/14/53

**Roy Udelhofen**  
 BD 11/6/52 BP 9/13/53

**Rodney Keup**  
 BD 10/16/53 BP 11/15/53

**Margery Udelhofen**  
 BD BP 1/19/54

**Diane Henley**  
 BD 4/11/54 BP 5/12/54

**Brenda Kolb**  
 BD 1/19/53 BP 7/1/54

**Mark Neumann**  
 BD 10/19/54 BP 10/31/54

**Dorothy Schmidt**  
 BD 12/29/15 BP 12/19/54

**Sheila Krueger**  
 BD 5/14/55 BP 6/26/55

**Edward Schuelke**  
 BD 8/22/55 BP 9/27/55

**Patti L. Ahern**  
 BD 5/15/55 BP 1/24/56

**Richard Neitzel**  
 BD 8/20/54 BP 4/29/56

**Debra J. Nissen**  
 BD 6/3/56 BP 11/23/56



## BAPTISMS

Donald C. Nissen BD 6/3/56 BP 11/23/56	Patti Schornack BD 9/9/56 BP 11/25/56	Earl J. Meredith BD 2/14/1894 BP 12/30/56	Carla McKiver BD 1/6/57 BP 2/17/57
Debra J. Hoops BD 1/25/57 BP 3/10/57	Bruce H. Sippel BD 1/23/57 BP 3/10/57	Wanda S. Brooks BD 3/23/57 BP 4/3/57	Jack Nissen BD 2/7/28 BP 4/14/57
Randy R. Jaeschke BD 4/3/57 BP 4/21/57	Kay L. Grundmeier BD 5/21/57 BP 6/2/57	Mark A. Dinger BD 3/27/57 BP 6/9/57	Steven L. Herron BD 5/3/57 BP 6/23/57
Harvey Jr. Flihs BD 7/24/57 BP 8/11/57	Gregory Peterson BD 7/23/57 BP 9/24/57	Linda Moldenhauer BD 7/14/57 BP 10/6/57	Nancy Angerhofer BD 9/14/57 BP 10/20/57
Lonnie R. Flagtvedt BD 10/20/57 BP 11/10/57	Debra Jensen BD BP 1/12/58	James Nissen BD 1/14/58 BP 3/23/58	Judith A. Nissen BD 1/14/58 BP 3/23/58
Gregory Siefkes BD 10/6/57 BP 4/13/58	Randy Swanson BD 7/22/58 BP 7/31/58	Bryan Danielson BD 8/1/58 BP 8/24/58	Peggy Reber BD 7/14/58 BP 8/31/58
Gerald J. Fleeger BD 8/29/58 BP 10/5/58	Susan K. Neitzel BD 9/16/58 BP 10/19/58	Steven Ackerson BD 12/2/58 BP 12/3/58	Linda Jensen BD 8/31/55 BP 12/21/58
Donna Swanson BD 10/24/58 BP 12/21/58	James A. Swanson BD 3/9/52 BP 12/21/58	Kim L. Brooks BD 1/25/59 BP 4/26/59	Kim Flagtvedt BD 3/24/59 BP 5/3/59
Donna Gilbertson BD 3/30/59 BP 5/3/59	Ricky Koehler BD 3/15/59 BP 6/7/59	Howard Gengerke BD 5/29/59 BP 6/28/59	Donald Pasch BD 5/25/59 BP 7/19/59
Michael Pigors BD 5/22/59 BP 8/2/59	Sharon Flihs BD 7/31/59 BP 8/23/59	Robin Sombke BD 8/15/59 BP 9/13/59	Timothy Flihs BD 8/25/59 BP 10/4/59
Tammy Bahr BD 9/4/59 BP 10/11/59	Reatha Reber BD 7/12/59 BP 10/11/59	Lynda Siefkes BD 6/17/59 BP 10/11/59	Douglas Krueger BD 9/12/59 BP 11/1/59
Kevin Pulfrey BD 10/28/59 BP 11/22/59	Roberta Wilcox BD 9/11/59 BP 3/20/60	Shirlee Flihs BD 2/28/60 BP 4/3/60	Gail McKiver BD 1/19/60 BP 4/3/60
Kathleen Morse BD 2/25/60 BP 5/1/60	Valerie Leonhardt BD 4/21/60 BP 5/15/60	Scott Jensen BD 2/26/60 BP 8/29/60	Suzi Leonhardt BD 8/22/60 BP 9/18/60
Leonard Buntrock BD 10/24/60 BP 11/24/60	Sherry Schaller BD 10/12/60 BP 11/27/60	Dennis Obenauer BD 1/29/58 BP 12/11/60	Sally Obenauer BD 11/4/50 BP 12/11/60
Stephen Obenauer BD 6/19/55 BP 12/11/60	Terry Herron BD 1/7/61 BP 2/9/61	Brett Neumann BD 2/13/61 BP 2/26/61	Mark Ackerson BD 5/5/61 BP 6/11/61
Donel Buntrock BD 12/20/60 BP 7/9/61	Richard Daniel Flihs BD 6/28/61 BP 7/16/61	Kelly Nehls BD 12/25/60 BP 7/19/61	Tammy Rud BD 5/28/61 BP 8/27/61
Beth Drube BD 8/16/61 BP 9/3/61	Douglas Neumann BD 7/31/61 BP 9/17/61	Karla Pulfrey BD 8/22/61 BP 9/24/61	Landal Leonhardt BD 9/27/61 BP 10/22/61
Caroline Schuelke BD 10/16/61 BP 11/12/61	Kyle Hoops BD 3/25/62 BP 4/8/62	John Engstrom BD 2/24/62 BP 5/20/62	Brenda Rose BD 5/7/62 BP 5/20/62
Kristie Koehler BD 11/19/61 BP 6/17/62	Debra Meister BD 4/21/62 BP 6/17/62	Dixie Baker BD 6/15/62 BP 7/22/62	Daniel Krueger BD 9/5/62 BP 10/7/62
Thomas Leonhardt BD 9/27/62 BP 10/21/62	Kim Rud BD 10/1/62 BP 11/22/62	Lori Ackerson BD 11/8/62 BP 12/2/62	Barbara Palm BD 5/19/40 BP 12/9/62
Michele Palm BD 12/21/62 BP 1/27/63	Nicholas Mortenson BD 3/29/63 BP 3/30/63	Scott Strecker BD 11/10/62 BP 4/14/63	William Schock BD 6/6/63 BP 6/30/63
Cynthia McKiver BD 6/11/63 BP 7/14/63	Kevin Knoll BD 7/10/63 BP 8/18/63	Darren Sombke BD 8/15/63 BP 8/25/63	Wendy Flihs BD 7/24/63 BP 9/15/63
Pamela Gengerke BD 9/2/63 BP 9/22/63	Todd Adler BD 5/21/63 BP 11/8/63	Dawn Emmen BD 7/3/62 BP 11/27/63	Lori Jensen BD 8/18/63 BP 12/15/63
Todd Jensen BD 11/28/61 BP 12/15/63	Kelly Emde BD 1/19/64 BP 2/9/64	Philip Krueger BD 3/9/64 BP 3/15/64	Kerry Rud BD 11/19/63 BP 3/22/64
Lyn Flihs BD 3/7/64 BP 3/29/64	Christine Gengerke BD 8/2/64 BP 8/30/64	Karleen Hoops BD 8/12/64 BP 9/13/64	Susan Martin BD 10/15/64 BP 11/15/64
Carla Edstrom BD 10/31/64 BP 12/14/64	Mrs. Sheldon Lenling BD BP 12/27/64	Scott Nehls BD 12/19/64 BP 1/24/65	Terry Weisenberger BD 3/5/65 BP 4/25/65
Rhonda Wietgreffe BD 3/4/65 BP 4/25/65	Cheryl Tullis BD 4/6/65 BP 5/2/65	Amy Knoll BD 4/25/65 BP 5/16/65	Michael Palm BD 6/10/65 BP 7/11/65
Terry Leonhardt BD 8/29/65 BP 9/19/65	Kristine Tullis BD 10/31/65 BP 11/21/65	Lance Nehls BD 3/25/66 BP 4/24/66	Timothy A. Tullis BD 4/18/66 BP 5/8/66
Michael Wietgreffe BD 1/17/66 BP 5/29/66	Lonnie Bahr BD 3/28/65 BP 7/17/66	Jessica Dobberpuhl BD 10/2/66 BP 10/23/66	Chad Sombke BD 10/21/66 BP 10/30/66
John E. Neff BD 2/14/67 BP 3/26/67	Stephanie Thurston BD 3/18/67 BP 4/16/67	Todd Wietgreffe BD 1/17/67 BP 4/30/67	Lisa Schaller BD 5/28/67 BP 6/18/67
Lora Schaller BD 5/28/67 BP 6/18/67	Terry Roth BD 5/23/60 BP 7/23/67	Richard D. Flihs BD 7/6/67 BP 7/30/67	Ann Gengerke BD 7/8/67 BP 8/13/67
Bill Strecker BD 7/17/67 BP 8/13/67	Daneld Mielke BD 7/16/67 BP 9/10/67	Jill Sombke BD 9/28/67 BP 10/8/67	Karen Nehls BD 8/30/64 BP 10/23/67
Tammera Leonhardt BD 10/29/67 BP 11/12/67	Kolin Hoops BD 12/28/67 BP 1/21/68	Leonard Miller BD 11/23/67 BP 1/21/68	Curtis Merkel BD 11/28/67 BP 2/11/68
Brenda Leonhardt BD 2/22/68 BP 3/17/68	Kevin Tullis BD 3/26/68 BP 4/14/68	Kristine Feller BD 2/20/68 BP 4/28/68	Beth Hendrickson BD 5/15/68 BP 6/2/68
Yurlunda Vigil BD 2/6/68 BP 6/12/68	Brenda McCullough BD 5/22/68 BP 6/16/68	Darcy Ruediger BD 6/4/68 BP 6/30/68	Wesley T. Reber Jr. BD 11/6/68 BP 12/8/68
Mary Norton BD BP 12/19/68	Darci Bierman BD 1/3/69 BP 1/26/69	Scott Lorenz BD 1/30/68 BP 2/9/69	Kevin Fuehrer BD 2/10/69 BP 3/9/69
Tracy Leonhardt BD 1/27/69 BP 3/30/69	Scott Olson BD 4/27/69 BP 6/8/69	Roy Nehls BD 2/28/68 BP 7/26/69	Cindy Hein BD 6/19/69 BP 7/27/69
Chad Nierman BD 6/7/69 BP 7/27/69	Rux Jensen BD 8/9/69 BP 8/31/69	Kevin Krueger BD 7/17/69 BP 9/4/69	Glenn D. Lawson BD 4/8/69 BP 10/15/69



# BAPTISMS

Chad Lehman BD 9/25/69 BP 11/9/69	Jennifer Neiger BD 11/5/69 BP 12/28/69	Timothy Thurston BD 12/19/69 BP 1/6/70	Nicole Schaller BD 12/25/69 BP 1/18/70
William Kurtz BD 10/24/69 BP 1/25/70	Jay Dale BD 7/27/69 BP 3/27/70	Kerry Tullis BD 3/10/70 BP 3/29/70	Ed L. Fredrickson BD 7/11/1899 BP 9/6/70
Kathy Weitzel BD 9/7/70 BP 10/24/70	Collin Gengerke BD 9/21/70 BP 10/25/70	Tamora Young BD 11/16/70 BP 12/13/70	Dawn Ruediger BD 12/14/70 BP 1/24/71
Rebecca Flihs BD 12/29/70 BP 2/7/71	Lisa Nierman BD 12/20/70 BP 3/14/71	Tania Berry BD 3/30/71 BP 4/11/71	John Rose BD 2/4/71 BP 5/23/71
Douglas Ehrenberg BD 4/10/71 BP 6/13/71	Teresa Leonhardt BD 5/15/71 BP 6/27/71	Rebecca Rose BD 5/30/71 BP 7/4/71	Tami Bierman BD 5/31/71 BP 8/15/71
Stacie Olson BD 6/10/71 BP 8/28/71	Kimberly Tullis BD 8/9/71 BP 8/29/71	Amber Wegner BD 6/3/71 BP 8/29/71	Jennifer Neff BD 8/13/71 BP 9/12/71
Troy Larson BD 6/12/66 BP 9/19/71	Darren Dohman BD 5/26/71 BP 10/4/71	Timothy Dodge BD 8/24/71 BP 10/17/71	Kelly Hoops BD 10/30/71 BP 12/5/71
Timothy Fuehrer BD 11/8/71 BP 12/12/71	Jeri McKiver BD 1/14/72 BP 2/6/72	Karen Meister BD 3/4/71 BP 2/11/72	Tricia Hein BD 11/14/71 BP 2/16/72
Nicholle Schuelke BD 2/2/72 BP 2/27/72	Sydney Kellison BD 5/21/71 BP 4/1/72	Angela Knapp BD 3/19/72 BP 4/16/72	Ellen Kimball BD 7/9/54 BP 5/14/72
David Perrault BD 1/8/72 BP 5/28/72	Angela Hein BD 7/2/72 BP 8/26/72	Bret Flihs BD 9/18/72 BP 10/8/72	Kathleen Dixon BD 8/13/72 BP 11/5/72
Larry Jark BD 9/30/72 BP 11/19/72	Lantry Lorenz BD 12/23/72 BP 1/1/73	Aaron Feser BD 1/5/73 BP 2/11/73	Kelsi Gunderson BD 3/12/73 BP 4/22/73
Bryan Ehrenberg BD 2/28/73 BP 5/20/73	Anna Meister BD 8/4/70 BP 9/20/73	April Meister BD 4/9/68 BP 9/20/73	Lloyd Meister BD 10/13/61 BP 9/20/73
Si J. Meister BD 8/21/64 BP 9/20/73	Lynde Flihs BD 9/23/73 BP 10/28/73	Jonathan A. Fryer BD 11/1/67 BP 10/28/73	Todd Fryer BD 5/11/69 BP 10/28/73
Lance Flihs BD 10/7/73 BP 11/11/73	Daniel Kroll BD 12/18/73 BP 1/27/74	Scott Lahammer BD 10/12/73 BP 2/3/74	Scott Neumann BD 2/2/74 BP 3/17/74
Allan Merkel BD 3/7/74 BP 6/9/74	Christopher Berry BD 7/26/74 BP 8/4/74	Johanna Johnson BD 9/12/1889 BP 9/13/74	Shawn Gengerke BD 9/8/74 BP 10/13/74
Cheryl Hein BD 8/6/74 BP 10/27/74	Glenda Tullis BD 11/12/74 BP 12/10/74	Jodi Lahammer BD 9/17/74 BP 12/15/74	Jason Neiger BD 9/9/74 BP 12/15/74
Jacqueline Schuelke BD 3/23/75 BP 4/20/75	Heather Feser BD 4/30/75 BP 5/25/75	Chad Commet BD 1/24/75 BP 6/8/75	Jeffrey Ringgenberg BD 5/29/75 BP 7/13/75
Travis McKiver BD 7/30/75 BP 8/17/75	Kerry Bahr BD 6/27/75 BP 9/21/75	Betsy Leonhardt BD 9/11/75 BP 9/21/75	Roberta Leonhardt BD 8/26/75 BP 9/21/75
Jesse Nierman BD 8/2/75 BP 9/21/75	Jesse Tullis BD 1/22/76 BP 1/22/76	Delbert Hinkelman BD 12/29/75 BP 2/1/76	Jeffery Flihs BD 1/23/76 BP 2/29/76
Rebecca Pasch BD 6/17/76 BP 7/15/76	Dodie Johnson BD 9/19/76 BP 10/3/76	Teresa Gengerke BD 11/11/76 BP 11/11/76	Trish Gengerke BD 11/11/76 BP 11/11/76
Laura Jark BD 1/29/77 BP 3/27/77	Alvin Purcell BD 3/28/38 BP 4/4/77	Barbara Purcell BD 9/26/46 BP 4/4/77	Cynthia Purcell BD 10/19/61 BP 4/4/77
Janet Purcell BD 8/31/62 BP 4/4/77	Katherine Purcell BD 4/20/71 BP 4/4/77	Mary Purcell BD 9/26/63 BP 4/4/77	Patricia Purcell BD 7/13/67 BP 4/4/77
Alicia Purcell BD 4/25/77 BP 5/15/77	Richard A. Knoll BD 6/27/77 BP 7/17/77	Michele Erickson BD 1/20/75 BP 8/28/77	Angela Haugen BD 3/26/76 BP 9/1/77
David Kroll BD 8/5/77 BP 9/11/77	Justin Bahr BD 5/18/77 BP 9/18/77	Elvis Hinkelman BD 10/10/77 BP 10/10/77	Molly Tullis BD 10/27/77 BP 11/6/77
Dawn Flihs BD 11/27/77 BP 12/18/77	Michael Patton BD 1/17/78 BP 2/12/78	Tamara Hein BD 12/17/77 BP 2/19/78	Shonna Krueger BD 5/8/78 BP 6/12/78
Kalli Flihs BD 7/20/78 BP 8/13/78	Ryley Erickson BD 7/7/78 BP 8/28/78	James Leonhardt BD 12/24/78 BP 1/14/79	Jeffrey Kroll BD 12/21/78 BP 1/28/79
Freddie Pullan BD 3/12/59 BP 3/12/79	Christopher Knoll BD 2/6/79 BP 5/6/79	Alicia Merkel BD 3/9/79 BP 5/27/79	Jessica McMorrow BD 12/31/78 BP 5/31/79
Travis Harder BD 5/1/79 BP 6/10/79	Wayne Cease BD BP 6/14/79	Alex Reisenweber BD 6/21/79 BP 7/22/79	Ryan Gengerke BD 9/3/79 BP 9/30/79
Carrie Feser BD 10/23/79 BP 11/11/79	Shane Falk BD 12/7/71 BP 1/11/80	Jason Gorczewski BD 1/8/80 BP 2/3/80	Marnee Johnson BD 1/13/80 BP 2/13/80
Erica Marske BD 1/18/80 BP 4/20/80	Stephanie Stearns BD 6/5/80 BP 7/13/80	Brittany Joslin BD 7/9/80 BP 8/3/80	Ryan Quiggle BD 6/18/80 BP 8/16/80
Gina Furman BD 8/29/80 BP 9/28/80	Oscar Cease BD BP 2/8/81	John Kroll BD 12/1/80 BP 2/25/81	Landon Schoenfeld BD 5/16/81 BP 6/21/81
Jason Pullan BD 6/18/81 BP 8/13/81	Lisa Sippel BD 7/29/81 BP 8/16/81	Kevin Pray BD 7/18/81 BP 8/23/81	Tigh Flihs BD 8/5/81 BP 9/13/81
Darin Krueger BD 9/22/81 BP 12/8/81	Amanda Briggs BD 11/6/81 BP 12/13/81	David Berry BD 11/21/81 BP 12/27/81	Lauren Stearns BD 2/23/82 BP 3/28/82
Roberta Pasch BD 6/9/82 BP 7/11/82	Anthony Davis BD 8/21/82 BP 10/3/82	Lisa Pray BD 8/23/82 BP 12/12/82	Harvey III Flihs BD 12/20/82 BP 1/14/83
Adam Harder BD 3/16/83 BP 4/30/83	Amy Briggs BD 4/16/83 BP 5/8/83	Meagan Wheeting BD 1/28/83 BP 5/8/83	Kellie Furman BD 4/27/83 BP 5/29/83
Kayla Johnson BD 6/8/83 BP 7/2/83	Robin Flihs BD 8/23/83 BP 9/9/83	Austin J. Schuelke BD 9/2/83 BP 9/25/83	Debra Hein BD 9/10/83 BP 10/23/83
Lindsey Zeck BD 11/21/83 BP 1/29/84	Brett Merkel BD 2/12/84 BP 2/23/84	Philip Abeln BD 3/13/84 BP 4/21/84	Emily Sippel BD 4/18/84 BP 5/13/84
Katrina Maestas BD 5/5/84 BP 5/31/84	Jennifer Hassenpflug BD 8/4/83 BP 6/13/84	Jerry Johnson BD 5/29/84 BP 7/3/84	Dustin Hendrickson BD 6/16/84 BP 8/8/84



## BAPTISMS

Adam Feser  
BD 9/1/84 BP 9/23/84

Zachary Joslin  
BD 5/21/85 BP 7/7/85

Jared Kurtz  
BD 8/5/84 BP 9/21/86

Jacinda Fornier  
BD 6/18/87 BP 9/6/87

Jordan Stearns  
BD 2/20/88 BP 3/27/88

Scott Maestas  
BD 9/25/88 BP 11/20/88

Rachel Larson  
BD 1/16/89 BP 2/5/89

Jason Spencer  
BD 7/17/86 BP 5/14/89

Christian Christianson  
BD 12/24/89 BP 1/14/90

Samantha Larson  
BD 9/6/90 BP 11/18/90

Taylor Christianson  
BD 5/20/91 BP 6/9/91

Heather Merkel  
BD 10/11/91 BP 12/28/91

Michael Protas  
BD 10/2/84 BP 1/7/85

Jacqueline Hein  
BD 10/21/85 BP 11/10/85

Tessa Kurtz  
BD 2/6/81 BP 9/21/86

Houston Hewitt  
BD 9/9/87 BP 10/25/87

Cody Herron  
BD 4/1/88 BP 5/22/88

Heather Dixon  
BD 8/1/88 BP 11/25/88

Jasper Pray  
BD 12/18/88 BP 2/19/89

Karen Leonhardt  
BD 4/20/89 BP 6/23/89

Hallie Hewitt  
BD 12/12/89 BP 2/4/90

Blake James  
BD 6/11/90 BP 11/23/90

Charles Pray  
BD 4/25/91 BP 6/16/91

Zachery Erdmann  
BD 10/25/91 BP 1/12/92

Megan McKiver  
BD 3/2/85 BP 3/24/85

April Cease  
BD 8/2/85 BP 3/21/86

Tana Dehning  
BD 4/2/87 BP 4/19/87

Trevor Zeck  
BD 5/15/87 BP 11/1/87

Katheryn Leonhardt  
BD 5/1/88 BP 6/5/88

Alex McKiver  
BD 9/22/88 BP 11/27/88

Angela Raethke  
BD 10/3/82 BP 4/9/89

John Wheeting  
BD BP 11/11/89

Nicholas Willett  
BD 6/21/90 BP 7/22/90

Heath Giedt  
BD 1/4/91 BP 2/17/91

Christopher Dell  
BD 7/5/91 BP 8/18/91

Mason Fuehrer  
BD 3/27/91 BP 1/26/92

Courtney Pray  
BD 3/21/85 BP 4/28/85

Samantha Stearns  
BD 8/11/86 BP 8/24/86

Desiree Giedt  
BD 7/29/87 BP 8/23/87

Michelle Flihs  
BD 1/10/88 BP 2/7/88

Jamie Herron  
BD 3/3/88 BP 7/3/88

Jeffrey Krueger  
BD 12/2/88 BP 1/26/89

Lauren Wheeting  
BD 9/29/88 BP 4/16/89

Blake Flihs  
BD 12/13/89 BP 12/22/89

Samuel Furman  
BD 8/13/90 BP 9/16/90

Colin Herron  
BD 2/1/91 BP 6/2/91

Felicia Sippel  
BD 8/29/91 BP 11/3/91

Micah Christianson  
BD 6/2/92 BP 6/14/92



# CONFIRMATIONS

1896: Hulda Bahr	1896: Laura Frank	1896: Marie Weihrauch	1899: Hartmann Behlkow
1899: Emil Erdmann	1899: Bertha Krueger	1899: Alma Kuehnert	1899: Richard Lestin
1899: Otto Rock	1899: Clara Walter	1899: Hedwig Ziesmann	1899: Minna Ziesmann
1900: Louisa Bloedorn	1900: Marie Wockenfuss	1901: Franz Bloedorn	1901: Carl Brown
1901: Ferdinand Erdmann	1901: Paul E. Krueger	1901: Ewald Kuehnert	1901: Emil Paetznick
1901: Emma Paetznick	1902: Martha Schornack	1902: Fredrich Voigt	1902: Edward Wockenfuss
1902: Ernest Wockenfuss	1903: Emma Erdmann	1903: Gustav Gengerke	1903: Anna Karnopp
1903: Clara Karnopp	1903: Emma Koepsel	1903: Lydia Krueger	1903: Ida Kubite
1903: Alma Lestin	1903: Ernest Lestin	1903: Bertha Paetznick	1903: Esther Schornack
1903: Paul Schornack	1903: Anna Schuelke	1903: Hertha Voigt	1903: Alma Walter
1903: Ernest Ziesmann	1904: Ida Bloedorn	1904: Ledru Frank	1904: Bernhard Kuehnert
1904: Philip Radke	1904: Bruno Rock	1904: Erich Stange	1904: Bernard Wockenfuss
1904: Selma Ziesmann	1906: Julius Karnopp	1906: Frieda Koepsel	1906: Arthur J. Schuelke
1906: Oscar Stange	1906: Friedrich W. Voigt	1908: Anton H. Bloedorn	1908: Clara Bloedorn
1908: Emma Bloedorn	1908: Cornelia Erdmann	1908: Otto Frank	1908: John Hopfner
1908: Margaret Hopfner	1908: George Karnopp	1908: Laura Kishner	1908: Arthur Krueger
1908: Frederick Krueger	1908: Maria Kubite	1908: Otto Kubite	1908: Herman Kuehnert
1908: Oscar Paetznick	1908: Johann Schornack	1908: Esther Stange	1908: Heinrich Wockenfuss
1908: Hugo Ziesmann	1909: Katherina Eske	1909: Paul Heuer	1909: Celia Jahnke
1909: Johann Kromback	1909: Ludvig Kromback	1909: Volley Paetznick	1909: Albert Schmidt
1911: Leonard Brendemuhl	1911: Edna Erdmann	1911: Ida Karnopp	1911: Esther Lenling
1911: Edwina Schlichting	1911: Rose Schmidt	1911: Henry G. Weihrauch Jr	1911: Lydia Wockenfuss
1912: Lydia Koepsel	1913: Amalia Brendemuhl	1913: Louis Eske Jr.	1913: Janette Friedrich
1913: Mabel Hopfner	1913: Herman Julson	1913: Emma Kimmel	1913: Ida Krueger
1913: Lena Kurtz	1913: Henry Lenling	1913: Amanda Schlichting	1913: Johann Schornack
1913: Elizabeth Seehafer	1914: Frances Schornack	1916: Gustav Bahr	1916: Maria Kroll
1916: Dorothea Linse	1916: Carl Paetznick	1916: Wilhelm L. Wockenfuss	1917: Henry Paetznick
1918: Albert Bahr	1918: Paul Ehrenberg	1918: Erna Karnopp	1918: Bertha Linse
1920: Marguerite Bahr	1920: Selma Breitzkreutz	1920: Alice Erdmann	1920: Ray Hopfner
1920: Amanda Krueger	1920: Edna Krueger	1920: Edwin Krueger	1920: Herman Rosenow
1920: Hertha Schlichting	1920: Bertha Schmidt	1920: Clarence Schutte	1920: David Scroggins
1920: Bertha Totzke	1920: Minnie Totzke	1920: Margaret Ulrich	1921: Ethel Erdmann
1922: Albert Badten	1922: Hulda Bahr	1922: Elsie Hornemann	1922: Fred Hornemann
1922: Florence Karnopp	1922: Lorna Krueger	1922: Mabel Krueger	1922: Sadie Krueger
1922: Margareta Paetznick	1922: Carl Reinhardt	1922: Frank Reinhardt	1922: Harold Reinhardt
1922: Elda Reinke	1922: Alfred Rose	1922: Sadie Rose	1922: Emma Schmidt
1922: Walter Scroggins	1922: Irene Voigt	1922: Mabel Wockenfuss	1923: Frank Young
1924: Alma Hornemann	1924: Alex P. Krueger	1924: Mary Meng	1924: Elsie Radke
1924: Lillian Radke	1924: Mary Rose	1924: Milton Thiemann	1925: Helena Bahr
1925: Virginia Harry	1925: Herman Hasemann	1925: Blanche Kurtz	1925: Alice Meister
1925: Ervin L. Meister	1925: Lillian Mielke	1925: Berthold C. Pigors	1925: Herman C. Pigors
1925: Margaret Pigors	1925: Esther Rohwer	1925: Hazel Rohwer	1925: Margaret B. Rohwer
1925: Minnie Schinkel	1925: Rose Schinkel	1925: Leonard H. Schmidt	1925: Alvin Sombke
1925: Clarence Sombke	1925: Edward Sombke	1925: Elda Sombke	1925: Mabel Sombke
1926: Jesse Alberts	1926: Leona Alberts	1926: Erna Berens	1926: Walter Dobberpuhl
1926: Ora Erdmann	1926: Viola Erdmann	1926: Randall Jacobs	1926: Mabel Jensen
1926: Lillian Jost	1926: Louise Jost	1926: Mabel Kimmel	1926: Esther Krueger
1926: Hattie M. Krueger	1926: LaVerna Lorenz	1926: Elda Paepke	1926: Gilbert Pigors
1926: Hazel Reinhardt	1926: Harold Rosenow	1926: Ivan Smith	1926: Emanuel Strom
1927: Ruby Hasemann	1927: Mrs. J. Hoops	1927: Eva Hornemann	1927: Maude Meister
1928: Marvin Gengerke	1928: Herbert Hornemann	1928: Reuben Lehman	1928: Maurice Osman
1928: Eva Inglis Radke	1928: Lawrence Rohwer	1928: Harold Schornack	1928: Dorothy Scroggins
1929: Herman Jensen	1929: John Underwager	1930: Armond Erdmann	1930: Marvin Hasemann
1930: Mabel Jost	1930: Richard Krueger	1930: Viola Krueger	1930: Howard Schornack
1930: Ora Schuelke	1930: Emil Ziesmann	1931: Bertha Bradshaw	1931: Guy Herron
1931: Mrs. C. Jensen	1931: Walter Neldon	1931: Evelyn Schinkel	1931: Ella Ziesmann
1932: Pearl Bingen	1932: Doris Erdmann	1932: Marvin S. Erdmann	1932: Robert Holtz
1932: Karry Inglis	1932: Marie Inglis	1932: Frank Jones	1932: Ruth Jones
1932: Ella Jost	1932: Ralph Karnopp	1932: Bernice Nehls	1932: Grace Nehls
1932: Eldora Radke	1932: Elizabeth Reinhardt	1932: June Reinhardt	1932: Lyle Schuelke
1932: Lyle Von Wald	1932: LaVerna Wilke	1932: Gladys Willis	1933: Beverly Erdmann
1933: Mabel Erdmann	1933: LaVohn Herron	1933: Grace Hollis	1933: Frances Jones
1933: Mary Jones	1933: Lucille Krueger	1933: Eugene Neuman	1933: Irene Osman
1933: Ralph Peterson	1933: Kenneth Schmidt	1933: Doris Schornack	1935: Dorothy Bingen
1935: Kenneth Bingen	1935: Donald Bradshaw	1935: Marvin Bradshaw	1935: Maxine Hollis
1935: Anna M. Louise Hoops	1935: William Hoops	1935: Alvin Hornemann	1935: Loreen Hornemann
1935: Thurlow Lorenz	1935: Verne Sundermeyer	1935: Marlys Van Bramer	1935: Lorraine Van Riper
1935: Marcella Van Riper	1935: Harold Wattier	1936: Ernest Hasemann	1936: Pearl Hasemann
1936: Dorothy Hoops	1936: Fred Hoops	1936: Lois Hoops	1936: Alvina Knoll
1936: Florence Nehls	1936: Marvin Sowers	1936: May Sowers	1936: Michael Sowers
1937: Betty Herron	1937: Alice Roettele Jensen	1937: Charles Jensen	1937: Milton Jensen
1937: Mae Knoll	1937: Leland Nehls	1937: Beverly Schmidt	1937: Robert Schuelke
1937: Mabel Sippel	1937: Geraldine Van Riper	1937: Ruth Wilke	1938: Howard Jones
1938: Richard Knoll	1938: Myrtle Nehls	1938: Phyllis Olson	1938: Shirley Olson
1938: LaVanda Radke	1938: Nellie Ried	1938: Roy Simpson	1938: Duane Voigt



## CONFIRMATIONS

1939: Floyd Erdmann	1939: Winifred Schuelke	1939: Lyle Thurston	1940: Arlene Christman
1940: Myrtle Clouse	1940: Harvey Dorfschmidt	1940: Gloria Eske	1940: Marguerite Eske
1940: Virginia Harms	1940: Elsie Hasemann	1940: Dorothy Herron	1940: Annabelle Jensen
1940: Lyla Krueger	1940: Leslie Lund	1940: Verne McCullough	1940: Allene Meister
1940: Goldie Meyers	1940: Dallas Nehls	1940: Frank Rosenow	1940: Lorine Rosenow
1940: Irene Siefkes	1940: Harry Sippel	1940: Marie Sippel	1940: Marvin Sippel
1940: Melvin Sippel	1940: Clinton Voight	1940: Arthur Wagner	1940: Carroll Wagner
1941: Darlene Knoll	1941: Madlyn Simpson	1942: Anna Marie Bahr	1942: Milton Bruns
1942: Louis Eske Jr	1942: Darleen Herron	1942: Geneva Hollenbeck	1942: Dallas Jensen
1942: Christ Knoll	1942: Betty Koehler	1942: George Leonhardt	1942: Duane Neumann
1944: Marvin Harms	1944: Helen Jones	1944: Bertha A. Koehler	1944: Patricia Raap
1944: Kenneth Schaller	1944: Myron Schaller	1944: Orville Schaller	1944: Otho Schaller
1944: Walter Schaller	1944: Inez Schliebe	1944: Duane Schmidt	1944: Allen Schuelke
1944: Vern D. Siefkes	1944: Harlow Sombke	1944: Renee Strom	1944: Roy Strom
1944: Mary Ann Voight	1944: John Wattier	1945: Harvey Mielke	1945: Mary Ann Nehls
1946: Betty Ellingson	1946: Russell Ellingson	1946: Marvel Kolb	1946: Delbert Leonhardt
1946: Allan Schornack	1947: Donald Craig	1947: Donald Feller	1947: Gerald Jaeschke
1947: Edith A. Keup	1947: LaVanda Lenling	1947: Kathryn Meleken	1947: Marion Pigors
1947: Irene Reber	1947: Wesley Reber	1947: Jeannine Thiemann	1947: Russell Thiemann
1948: Donald Berreth	1948: Carroll Clocksene	1948: Betty Flihs	1948: Jean Koehler
1948: Jerrold Koehler	1948: Myrna Paetznick	1948: Benjamin Schaller	1948: Ardis Schuelke
1948: Carol Schuelke	1949: Shirlee Lakemaker	1949: Bonnie Lenling	1949: Floyd Leonhardt
1949: Marilyn Luedeke	1949: Robert Luedeke	1949: Ethel Lyle	1949: Pamela Mielke
1949: Helmuth H. Paetznick	1949: Marlene Schuelke	1949: Virgil Smeins	1950: Marilyn Fehr
1950: Janis Feller	1950: Joy Feller	1950: Doris Flihs	1950: Lorine Leonhardt
1950: Ila Meister	1950: Lloyd Neumann	1951: Erma Alldridge	1951: Vernon Alldridge
1951: Winfred Bahr	1951: Beulah Hoops	1951: John J. Johnson	1951: Lucille Knoll
1951: Robert Knoll	1951: Hattie A. Krueger	1951: Howard Markley	1951: Borden Meyers
1951: Roy Mielke	1951: Eldon Rehfuss	1952: Doris Angerhofer	1952: Althea Beckwith
1952: Leland Christian	1952: Norma Hassenpflug	1952: Darold Hoops	1952: Carroll Nehls
1952: Rose Neldon	1952: Clarice Neumann	1952: John Nissen	1952: Arlene Schaller
1952: Marian Schmidt	1952: Mary Alice Schmidt	1952: DeWane Schumacher	1952: Roland Tullis
1953: Darlene Breikreutz	1953: Janice Clouse	1953: Clarence Georgens	1953: Gilbert Hinkelman
1953: JoAnne Hoops	1953: Gerald Lakemaker	1953: Bonnie Schaller	1953: Wynn Schumacher
1953: Delwin Tullis	1954: Ellen Bahr	1954: Mitchell Blankenberg	1954: Carol Erdmann
1954: Alvin Meister	1954: Dorothy Schmidt	1954: Linda Schuelke	1954: Elizabeth Stauch
1954: Leland Stauch	1954: Della Udelhofen	1954: Leo F. Udelhofen	1954: Margery Udelhofen
1955: Joan Rohwer	1955: Rick Schliebe	1955: Margie Schumacher	1955: Ray Udelhofen
1956: Cynthia Blankenberg	1956: Berdette Craig	1956: Earl J. Meredith	1956: Lambert Mielke
1956: Ronald Mielke	1956: Edward Stauch	1956: Steven Thurston	1957: Duane Berreth
1957: Brian Blankenberg	1957: David Feller	1957: Duane Flihs	1957: Duane Georgens
1957: Dennis Hassenpflug	1957: Connie Jaeschke	1957: Judith Lehman	1957: Gregory McCullough
1957: Allen McKiver	1957: Maxine Meister	1957: Robert Meister	1957: James Morse
1957: Arlene Nehls	1957: Jack Nissen	1957: David Olson	1957: Maryalyn Richardson
1958: Larry Buntrock	1958: Judy McKiver Flihs	1958: Mathilda Hinkelman	1958: Gary Nehls
1958: Dennis Swanson	1958: Carole Thurston	1959: Mrs. Donald Engstrom	1959: Elsa Erdmann
1959: Arthur Gengerke	1959: Dennis Henley	1959: Mary Jane Johnson	1959: Charles Kellison
1959: Gerald Lehman	1959: Vivian Leonhardt	1959: David McCullough	1959: Sharon McKiver
1959: Arlene Schlenker	1959: Dean Schumacher	1959: Margie Spilloway	1960: Darrell Flihs
1960: Carolyn Pigors	1960: John Rohwer	1960: Judy Rohwer	1960: Leonard Jack Schmidt
1960: Mary Ann Sippel	1960: Michael Wagner	1961: Evelyn Gengerke	1961: Carol Georgens
1961: Amanda Hammond	1961: Carlos Hammond	1961: Lewis Hammond	1961: Donald Jensen
1961: Wayne Knoll	1961: Betty Martin	1961: John Martin	1961: Jane Mielke
1961: Sandra Neff	1961: Julie Olson	1961: William E. Pasch	1961: Donald Roth
1961: Ardis Schlenker	1961: Arla Schlenker	1961: Arthur Schlenker	1961: Mrs. Don Schmitt
1961: Betty Swanson	1961: Darlys Swanson	1962: James Bahr	1962: James Borchard
1962: Carol Craig	1962: Diane Flihs	1962: Larry Flihs	1962: Roger Krueger
1962: Gene McCullough	1962: Terry Meister	1962: Dennis Neitzel	1962: Clyde Neuman
1962: Deloris Obenauer	1962: Ella Obenauer	1962: Ronald Rehfuss	1962: William Schuelke
1962: Wayne Stange	1962: Donna Swanson	1963: Ramon Adler	1963: Barbara Angerhofer
1963: Douglas Bahr	1963: Mrs. Richard Edstrom	1963: Judy Flihs	1963: JoAnne Jaeschke
1963: Mrs. Wilmer Jensen	1963: Nancy McKiver	1963: Sherry McKiver	1963: Ed Neff
1963: Ronald Neitzel	1963: Thomas Paepke	1963: Mrs. Darrell Palm	1963: Dorothy Peterson
1963: Brenda Pigors	1963: James Schuelke	1963: Mrs. Floyd Theiss	1963: Fred C. Zoellner
1963: Mrs. Fred Zoellner	1964: Bonnie Bahr	1964: Barbara Craig	1964: Diane Feller
1964: Gary Flihs	1964: Joan Flihs	1964: Sandra Flihs	1964: Linda Gengerke
1964: Richard Karnopp	1964: Roberta Knickrehm	1964: David Krueger	1964: Mrs. Sheldon Lenling
1964: Bertell Martin	1964: Leslie Martin	1964: William H. Neitzel	1964: Rita Obenauer
1964: Berthold Pigors	1964: Joseph Podrabsky	1964: Charles Porter	1964: Arlinda Rud
1964: Terry Rud	1964: Diane Schornack	1964: Roxanne Schuelke	1964: Martin Sippel
1964: Gregory Tullis	1964: Sharon Tullis	1965: Dale Buntrock	1965: Jeanette Flihs
1965: Mary Flihs	1965: Norman Gengerke	1965: Linda Herron	1965: Gary Hoops
1965: Edith Krueger	1965: Dennis Kurtz	1965: Gary Lenling	1965: William McKiver
1965: Debra L. Neitzel	1965: Marsha Neumann	1965: Judy Peterson	1965: Sandra Schaller
1965: David Wagner	1966: Dan Leonhardt	1966: Diane Leonhardt	1966: Eretta Leonhardt



## CONFIRMATIONS

1966: Jacky McKiver	1966: Dennis Meister	1966: Robert Pasch	1966: Betty Rehfuess
1966: Peggy Schornack	1967: Lorin Fliehs	1967: Craig Forness	1967: Dean Karnopp
1967: Alroy Pasch	1967: Elaine Schuelke	1967: Roy Udelhofen	1968: Patricia Bahr
1968: Mrs. Gaylen Bierman	1968: Cheryl Buchholz	1968: Mrs. Terry Diegel	1968: Connie Falk
1968: Denise Forness	1968: Susan Hein	1968: Diane Henley	1968: Ross Hickenbotham
1968: Dorothy Honey	1968: Leslie W. Honey	1968: Douglas Hoops	1968: John C. Knoll
1968: Susan Knoll	1968: Valerie Koehler	1968: Linda Lehman	1968: Terry Merkel
1968: JoAnne Nehls	1968: John V. Nehls	1968: Richard Neitzel	1968: Mary Norton
1968: Janet Rohwer	1968: Steven Schaller	1969: Loren Bahr	1969: Dale Fliehs
1969: Shirley Gengerke	1969: Steven Jensen	1969: Sheila Krueger	1969: Gloria McKiver
1969: Michael D. Neitzel	1969: Mark Neumann	1969: Faye Siefkes	1970: Terry Erickson
1970: Deborah Herron	1970: Paula K. Krueger	1970: Bruce Merkel	1970: Karla Peterson
1970: Harlan Radke Jr.	1970: Lori Rudnick	1970: Patti Schornack	1970: Steven K. Wagner
1971: Tanya Ackerson	1971: Tamara Erickson	1971: Harvey Jr. Fliehs	1971: Jeffrey Hendrickson
1971: Steven L. Herron	1971: Debra J. Hoops	1971: Richard Kammerer	1971: Carla McKiver
1971: Darwin Schmig	1971: Gregory Siefkes	1971: Bruce H. Sippel	1971: Ricky Sultz
1972: Steven Dixon	1972: Cynthia Falk	1972: Susan Forness	1972: Randy R. Jaeschke
1972: Jacolyn Kammerer	1972: Ellen Kimball	1972: Cheryl Krueger	1972: Susan K. Neitzel
1972: Diane Schmig	1973: Tammy Bahr	1973: Jack Dixon	1973: Sharon Fliehs
1973: Timothy Fliehs	1973: Howard Gengerke	1973: Duane Jark	1973: Ricky Koehler
1973: Krista Peterson	1973: Michael Pigors	1973: Peggy Reber	1973: Reatha Reber
1973: Lynda Siefkes	1973: Steven Sombke	1974: Sherri Dixon	1974: Shirlee Fliehs
1974: Judy Kammerer	1974: Douglas Krueger	1974: Melodee Martin	1974: Gail McKiver
1974: Donald Pasch	1974: Janine Rudnick	1974: Sherry Schaller	1975: Timothy Adler
1975: Richard Daniel Fliehs	1975: Terry Herron	1975: Suzi Leonhardt	1975: Tamra Lorenz
1975: Mary Merkel	1975: Brett Neumann	1975: Caroline Schuelke	1976: Mark Adler
1976: Patty Dixon	1976: Toby Erickson	1976: Kyle Hoops	1976: Kristie Koehler
1976: Daniel Krueger	1976: Bradley Larson	1976: Ann Martin	1977: Jacki Dixon
1977: Valerie Fliehs	1977: Pamela Gengerke	1977: Betty Gorczewski	1977: Michael Gorczewski
1977: Martin Johnson	1977: Sherry Johnson	1977: Thomas Leonhardt	1977: Cynthia McKiver
1977: Debra Meister	1977: Roxanne Merkel	1977: Lyle Nehls	1977: Gary Pawlowski
1977: Cynthia Purcell	1977: Janet Purcell	1977: Mary Purcell	1977: Darren Sombke
1977: Teri Wright	1977: Earl Zoellner	1978: Philip Adler	1978: Janelle Dirksen
1978: Tracey Erickson	1978: Michael Felkey	1978: Lyn Fliehs	1978: Kym Freeman
1978: Christine Gengerke	1978: Karleen Hoops	1978: Debra Kammerer	1978: Stacey Larson
1978: Susan Martin	1978: Allen McKiver Jr.	1978: James A. Meister	1978: Karen Nehls
1978: Carmel Nelson	1978: Charlotte Pawlowski	1978: Deborah Walden	1979: Lonnie Bahr
1979: Michael Dixon	1979: Kurt Duis	1979: Debra Kroll	1979: Dave Meister
1979: Scott Nehls	1979: Pamela Rudnick	1979: Myrna Wagner	1979: Terry Weisenberger
1980: Diane Dixon	1980: Tami Gengerke	1980: Michael Kroll	1980: Troy Larson
1980: Terry Leonhardt	1980: Vickie Luce	1980: Lance Nehls	1980: Jacqueline Quiggle
1980: Wayne Quiggle Jr.	1980: Kristine Tullis	1981: Laura Felkey	1981: Richard D. Fliehs
1981: Corrina Freeman	1981: Ann Gengerke	1981: Brian Harder	1981: John E. Neff
1981: Lisa Schaller	1981: Lora Schaller	1981: Chad Sombke	1981: Stephanie Thurston
1982: Beth Hendrickson	1982: Kolin Hoops	1982: Curtis Merkel	1982: Roy Nehls
1982: Jill Sombke	1982: Cheryl Tullis	1982: Kevin Tullis	1983: Kevin Fuehrer
1983: Drew Johnson	1983: Jeff Larson	1983: Roger Larson	1983: Alan Nierman
1983: Cliff Pray	1983: Kelly Pray	1984: Kelli Dixon	1984: Fred Erdman
1984: Kevin Krueger	1984: Chad Nierman	1984: James Pray	1984: Robert Pray Jr.
1984: Nicole Schaller	1984: Kerry Tullis	1985: Rebecca Fliehs	1985: Collin Gengerke
1985: Jennifer Neff	1985: Corey Nelson	1985: Destri Neuhardt	1985: Lisa Nierman
1985: Paula Pray	1985: Jody Ringgenberg	1985: Kimberly Tullis	1986: Janette Erdman
1986: Shane Falk	1986: Timothy Fuehrer	1986: Corey Harder	1986: Tricia Hein
1986: Kelly Hoops	1986: Crystal Knoll	1986: Charity Lenke	1986: Jeri McKiver
1986: Michelle Pray	1986: Freddie Pullan	1986: Nicholle Schuelke	1986: Sheldon Sheridan
1987: Kathleen Dixon	1987: Bryan Ehrenberg	1987: Daniel Felkey	1987: Aaron Feser
1987: Bret Fliehs	1987: Bradley Hewitt	1987: James Leidholt	1987: Kiersten Neuhardt
1988: Douglas Ehrenberg	1988: Lance Fliehs	1988: Lynde Fliehs	1988: Shane Iron Heart
1988: Kevin Keup	1988: Allan Merkel	1988: Timothy Thurston	1989: Heather Feser
1989: Cheryl Hein	1989: Tabitha Leidholt	1989: Chastity Lemke	1989: Lanny Merkel
1989: Eugene Ringer	1989: Jeffrey Ringgenberg	1989: Jacqueline Schuelke	1989: Glenda Tullis
1989: John Wheeting	1990: Jeffery Fliehs	1990: Delbert Hinkelman	1990: Betsy Leonhardt
1990: Travis McKiver	1990: Jesse Nierman	1990: Michelle Patton	1990: Jesse Tullis
1992: William Berger	1992: Dawn Fliehs	1992: Tamara Hein	1992: Michelle Leonhardt
1993: Shonna Krueger	1993: Michael Patton	1993: Lester Stearns	



# MARRIAGES

- 1899  
Ferdinand Lindart &  
Sophia Koppleman 11/30
- 1902  
Clara Walter &  
Emanuel Arnon 7/15  
Minna Ziesmann &  
Herman Pigors 7/16  
August H. Koepsel &  
Anna Odessa 11/6  
Herman Urban &  
Dora F. Schornack 11/12  
Herman C. Schweitzer &  
Ida A. Roesch 11/20  
John C. Quincer &  
Clara A. Pfeifer 12/9  
Henry Washnok &  
Clara Voigt 12/30
- 1903  
William J. Pfeifer &  
Edna Marvedin 1/1
- 1905  
John Hanson &  
Anna Bernet 2/15  
Edward W. Breittkreutz &  
Flora A. Voigt 3/6  
August Y. Smith &  
Lizzie H. Bloedorn 12/20
- \* 1907  
Gottlieb Reber &  
Anna Baertschi 3/28
- 1908  
Edward Schleif &  
Minnie Otterdahl 5/1  
Ewald Kuehnert &  
Edna Klaus 9/21
- 1909  
Emma Paetznick &  
Edward Koepsel 2/9  
Oscar Thiemann &  
Maria Von Wald 3/4  
Alma Kuehnert &  
George Niemeyer 10/6  
Guy L. Newman &  
Mathilda Knuth 12/25
- 1910  
Paul Ehrenberg &  
Martha Krenjow 3/1  
Dalton Ray &  
Thea Fjetland 5/3  
Friedrich W. Jacobs &  
Clara Karnopp 11/30
- 1911  
Elizabeth Schornack &  
Hosea J. Van Bramer 1/18  
Martha Schornack &  
August W. Synoground 10/18
- 1912  
Otto Bartz &  
Anna Hemmand 6/12  
Bertha Krueger &  
Charles R. Hatch 6/19  
Otto Wockenfuss &  
Leonora Reuteler 10/8  
Joseph Osman &  
Ella Brendemuhl 11/20
- 1913  
George H. Emerson &  
Esther W. Lenling 2/11  
Clara Bloedorn &  
O. Harry McGrew 3/19  
Johann Seefeld &  
Hedwig Paetznick 3/26  
Johann Knoll &  
Elsie Roettele 11/2
- 1914  
Lydia Krueger &  
Frank E. Jones 8/3  
Erich Stange &  
Anna Schuelke 9/30  
Minnie Gengerke &  
Henry B. Peterson 12/2  
William Sundermeyer &  
Marie Violette 12/8
- 1915  
Amanda Schlichting &  
David Dalglish 12/25
- 1916  
Ledru Hermann &  
Emma A. Koepsel 10/24  
Maria Kubite &  
Ernest Koeppe 10/24
- 1919  
Rose Schmidt &  
Clarence Schubbe 3/11  
Colman H. Wagner &  
Tekla Kimmel 7/9
- 1920  
William J. Krueger &  
Elsie Knittel 10/7
- 1921  
George Koehler &  
Bertha Dixon 9/1  
John F. Templin &  
Hedwig E. Michalsky 9/2  
Ida Karnopp &  
Wesley A. Parsch 9/25  
Henry F. Wockenfuss &  
Mabel H. Larson 10/8
- 1922  
Paul Stange &  
Gertrude Kuehnert 10/11
- 1923  
Albert Amsden &  
Lucy Totzke 1/5
- 1924  
Lorna Krueger &  
William May 6/26  
Joe Hoops &  
Clara Nehls 9/2  
Amanda Krueger &  
Albert Badten 10/25
- 1925  
Frank Nuttals &  
Claribel Schinkel 1/22  
Emanuel Strom &  
Ella Erdmann 7/7  
Minnie Schinkel &  
Irving Tillotson 7/12  
Sadie Krueger &  
Archie Pasch 7/26  
Emil Bartz &  
Sadie Rose 12/3  
Otto Hoops &  
Adeline Fenske 12/31
- 1926  
Arthur Mielke &  
Virginia Harry 7/2  
Louise Jost &  
William Bartz 9/11  
Raymond Moore &  
Alice Nelson 11/22
- \* 1927  
Alice Meister &  
Delbert Inglis 9/18  
Werner Baumgartner &  
Marie Grieben 11/4
- 1928  
Howard Lauruhn &  
Stella Seeley 2/15  
Elda Reinke &  
Donald Feller 6/10  
George E. Andrews &  
Sarah A. Neff 11/3  
Ernest McCleery &  
Marie Kuhlman 11/3  
Ernest Schrader &  
Hilda Gunderson 12/30
- 1929  
Esther Krueger &  
Marcus Holler 1/30  
Herman Jensen &  
Dora Linse 3/20  
Selmer Ellingson &  
Dora Jensen 8/17  
Al C. Hoy &  
Hazel Valentine 8/18  
Bertha Linse &  
Charles Graves 11/14
- 1930  
August G. Steuck &  
Viola F. Zumm 2/28  
Harvey Gennerman &  
Muriel Dickey 3/9  
Milton L. Ouren &  
Irene Erdmann 4/20  
Florence Karnopp &  
Arnold Gast 5/31  
Alfred G. Strom &  
Minnie E. Beets 7/29  
Harold L. Stevens &  
Dorothy Sterling 8/16  
Earl E. Frankenberger &  
Marie Gerritsen 9/17  
Alex P. Krueger &  
Lucille Hoppe 9/18
- 1931  
Harold Reinhardt &  
June R. Bell 1/4  
Margaret B. Rohwer &  
Wesley Cooper 12/26
- 1932  
Harold Abley &  
Evelyn Schultz 6/30
- 1933  
Walter G. Purdy &  
Merle A. McFarland 1/23  
Leonard Lenling &  
Marie Inglis 6/8
- 1934  
Henry Paetznick &  
Karry M. Inglis 1/31  
Arthur Krueger &  
Beulah Miller 6/27  
Erich Neumann &  
Mabel Kimmel 9/17
- 1935  
Lloyd Schinkel &  
Lois L. Swenson 9/23  
William Midwood &  
Carolyn Knight 10/19
- 1936  
Lewis Goldin &  
Merle Olson 3/1  
Emma Erdmann &  
James Wilcox 6/13  
Herbert E. McDonald &  
Elnora Lehr 9/10
- 1937  
Ervin Pasch &  
Lorraine Voigt 1/3  
Ray Richardson &  
Mae Olson 4/28  
Myles B. Rugh &  
Margaret Sundermeyer 6/5  
Anton Gerritson &  
Vera Wills 8/17  
Alfred Latzke &  
Evelyn Christenson 10/4
- 1938  
Ella Jost &  
Walter Reber 5/13  
Ora Schuelke &  
Winifred Eby 5/22  
Dean F. Potter &  
Jennie B. Eveboe 7/23  
Lyle Thurston &  
Volley Neumann 10/8  
Richard Krueger &  
Lyla M. Baldry 10/29  
Hugh Clouse &  
Myrtle Sippel 11/12  
Oscar Stroh &  
Evelyn Anderson 11/23
- 1939  
Henry E. Lehman &  
Dorothy E. Erdmann 9/23  
Marvin S. Erdmann &  
Mildred Henderson 11/11  
Beverly Erdmann &  
Verne McCullough 11/21  
Reuben Lehman &  
LaVerna Wilke 11/29  
Ivan Zoellner &  
Mildred Bingham 12/1
- 1939  
Irene Osman  
Eldon Rehfuess 12/10  
Marcella Van Riper &  
Orville Ott 12/10
- 1940  
Earling E. Iverson &  
Leitha Easterby 3/16  
Bernice Nehls &  
Andrew Larson Jr. 7/21  
Beverly Schmidt &  
William Reints 9/22
- 1941  
Lorraine Van Riper &  
Charles Frisbie 6/1  
James M. Acheson &  
Rosalie Raap 6/2  
Roy Simpson &  
Madlyn Knoll 8/3  
Norman Bouton &  
Ione Jerde 8/15
- 1942  
Harold Schornack &  
Agnes Svarstad 8/11  
Marvin Sippel &  
Margaret Johnson 12/16
- 1944  
Alfred R. Keup &  
Phyllis A. Olson 3/6  
Raymond Breittkreutz &  
Helen Hoops 7/15  
Bernhard Jensen &  
Mildred Quandahl 10/11  
Moller R. Johnson &  
Selma Schwarting 12/27
- 1945  
Eugene Neuman &  
Alvera Weihrauch 1/21  
Adolph Keup &  
Edith Young 8/27  
Maurice C. Harry &  
Arminta Badger 10/24  
Mary Ann Nehls &  
Marvin Fliehs 11/7
- 1946  
Mabel Sippel &  
Albion Hagele 4/26  
Herbert Pigors &  
Lorayne Belden 12/26
- 1947  
Donna Cowan &  
Marlin Klabo 5/2  
Alvin Kolb &  
Beverly Wahl 6/2
- 1948  
Douglas Wright &  
Ruth Schwarting 1/22  
Erich Andresen &  
Beverly Tesch 4/9  
Virgil Holman &  
Ruby Brigham 4/30  
Harry Sippel &  
Lorraine Johnson 12/30
- 1949  
Duane Neumann &  
Delores Hoops 2/14  
Kenneth H. Ness &  
Shirley Nehls 4/30  
Clifford Hoops &  
Beulah Meyers 6/2  
George Leonhardt &  
Delores Shannon 9/18  
Verle E. Jerde &  
Shirley Peepor 11/10
- 1950  
Orville Schaller &  
Joycelyn Ebert 6/9  
James Hoops &  
Ruth Bell 11/14
- 1951  
Elmer Schulz &  
Dorothy Herron 11/25  
Ethel Lyle &  
Lawrence Sombke 12/1  
Marlene Schuelke &  
Willis Ahern 12/29



## MARRIAGES

- 1952  
Joseph Podrabsky &  
Laurell Dunne 6/30  
Althea Beckwith &  
R. M. Grundmeier 7/6  
Ardis Schuelke &  
Daryl Danielson 10/25
- 1953  
Earl J. Meredith &  
Rose Hopfner 11/11
- 1954  
Ila Meister &  
Derald Jesme 3/28
- 1955  
Pamela Mielke &  
Burton Flugtvedt 6/19  
Myrna Paetznick &  
Gary Pulfrey 7/6  
Edwin Jandahl &  
Florence Jensen 10/14
- 1956  
Berdeen Hoops &  
Delmar Holsing 2/18  
Mary Alice Schmidt &  
William Brooks 6/24
- 1957  
Marian Schmidt &  
Elwin Wilcox 5/26  
Janis Feller &  
Henry Strecker 7/14  
Maralyn Richardson &  
Ronald Hoops 8/11  
Lorine Leonhardt &  
Norman Shannon 8/27  
Shirlee Lakemaker &  
Larry Fleeger 12/15
- 1958  
Darrell French &  
Marie Heffner 2/28  
Floyd Leonhardt &  
Vivian Roettele 6/1  
Joy Feller &  
Dale Wookey 6/15  
Marvin Bonn &  
Helen Morey 7/20  
Darlene Breikreutz &  
Herman Wahl 11/9
- 1959  
Duane Torguson &  
Marlys Schott 6/28  
Lloyd Neumann &  
Margie Spilloway 8/2  
Bonnie Schaller &  
Gerald Larson 8/30  
Darleen Swanson &  
Robert Ball 12/29
- 1960  
Arlene Schlenker &  
Donald Roth 7/9  
Jerauld B. Wright &  
Jeannine Imsland 8/6
- 1961  
Linda Schuelke &  
Ronald Riggs 1/28  
Joan Rohwer &  
Allan Weismantel 6/3  
Roland Tullis &  
Sandra Neff 6/18  
Floyd A. Miller &  
Helen Lockington 9/6  
Berdette Craig &  
Bruce Zastrow 9/9
- 1962  
Betty Martin &  
Ervin Mortenson 5/26  
Carole Thurston &  
Wayne Knoll 6/30  
Clemens Geffre &  
Karry Paetznick 10/28
- 1963  
Deloris Obenauer &  
Larry Steffen 5/10  
Ed Neff &  
Janet Tullis 6/23
- 1964  
Arthur Gengerke &  
Linda Swisher 4/11  
Sharon McKiver &  
Larry Sombke 6/6  
Carol Erdmann &  
Michael Dausch 8/1  
David Feller &  
Diane J. Rix 8/16  
Delwin Tullis &  
Sharon Hite 10/4
- 1965  
David McCullough &  
Patricia Blair 3/20  
William Paepke &  
Audrey Buntrock 7/17  
Richard A. Van Kempen  
& Barbara Dohman 7/24  
David Olson &  
Roberta Knickrehm 8/28  
Darrell Flieds &  
Mary Kay Seurer 11/27
- 1966  
Carol Georgens &  
Joseph R. Huffman 4/23  
Lewis Hammond &  
Jacquelyn Dunker 7/15  
Mathilda Hinkelman &  
David J. Henne 7/16  
Evelyn Gengerke &  
LeRoy Fuehrer 10/23
- 1967  
Lester Sippel &  
Hilda Flieds 2/23  
Gerald Lehman &  
Linda Stephens 12/22  
Julie Olson &  
Jack L. Berry 12/28
- 1968  
Connie Falk &  
James G. Rose 6/1  
Bonnie Bahr &  
Alan Nierman 7/1  
Diane Flieds &  
Ross Hickenbotham 9/21  
Susan Knoll &  
Thomas Hein 11/23
- 1969  
Mary Norton &  
David B. Young 2/12  
Diane Schornack &  
Michael W. Neiger 6/7  
Mary Jane Johnson &  
Duane Jark 7/12  
Judy Flieds &  
Richard A. Peser 8/9
- 1970  
Eretta Leonhardt &  
Myron Sattler 5/29  
Wayne A. Klipfel &  
Connie Bertsch 5/30  
Peter P. Lutter &  
Alice Boucher 6/16  
Jeannette Flieds &  
Robert W. Wegner 11/27
- 1971  
Roger D. McIntire &  
Marlene Rahm 3/20  
John J. Stange &  
Dorothy Nordeen 5/29  
Patricia Bahr &  
Wayne Hein 6/11  
William McKiver &  
Carol Schaller 6/12  
Ronald Hollingsworth &  
Sandra Craig 8/14  
Debra Neitzel &  
Alan L. Redman 8/28  
Gary Hoops &  
Nancy Buechler 11/23
- 1972  
Norman Gengerke &  
Ellen Kimball 6/2  
Carol Craig &  
Kenton Eisenbeisz 6/9
- 1972  
Judy Peterson &  
Barry Youngberg 6/10  
Judith Lehman &  
Lennis Larson 6/24  
Judy Rohwer &  
John Windorski 10/21
- 1973  
Elaine Rose &  
Larry Pigors 5/18  
Peggy Schornack &  
Galen Lahammer 7/21  
Diane Henley &  
H. Mark Forgey 9/1
- 1974  
Richard Neitzel &  
Kathryn Webb 4/20  
Vernon J. Kauk &  
Myrna Amdahl 8/11  
Michael Erickson &  
Dawn Nash 8/17
- 1975  
John C. Knoll &  
Kathleen Kurtz 4/12  
Sheila Krueger &  
Charles Johnson 9/20  
Janet Rohwer &  
Merle Harder 12/27
- 1976  
Diane Henley &  
Ronald Weishaar 8/13
- 1977  
Terry Merkel &  
Roxanne Phillips 2/20  
Berthold Pigors &  
Kim Lemke 6/25  
Michael Gorczewski &  
Betty Blondo 7/1  
Jacolyn Kammerer &  
Harvey Shafer 7/2  
Tamara Erickson &  
Clifford Pray 9/10  
Mark Neumann &  
Laurie Aasness 12/30
- 1978  
Lynda Siefkes &  
Richard Selle 9/2  
Robert Osness Jr. &  
Laurie Cleland 11/26
- 1979  
Melodee Martin &  
Freddie Pullan 3/17  
Randy R. Jaeschke &  
Kelee Spaar 6/8  
Shirlee Flieds &  
Kenneth C. Briggs 6/22  
Peggy Reber &  
Wayne Cease 7/14  
Steven Schaller &  
Cheryl Johnson 9/16
- 1980  
Patti Schornack &  
Mitchell Joslin 2/16  
Suzi Leonhardt &  
Torrie Oswald 3/1  
Caroline Schuelke &  
Dwayne Furman 3/15  
Bruce H. Sippel &  
Victoria Luce 4/12
- 1981  
Timothy Flieds &  
Peggy Koehler 3/21  
Gail McKiver &  
John L. Zeck 3/28  
Clarice Wagner &  
Jeff Miller 4/25  
Sherri Dixon &  
Rick W. Koehler 7/11  
Lori Rudnick &  
Steve Giedt 7/25
- 1982  
Pamela Gengerke &  
Alan Davis 6/5
- 1982  
Betty Wagner &  
Raymond Schnabel 7/10  
Ann Martin &  
Sheldon Sheridan 10/9  
Christine Gengerke &  
John Wheeting 10/16
- 1983  
Debra J. Hoops &  
Roy L. Olson 5/21  
Tammy Bahr &  
Vern Heilman 6/25
- 1984  
Myrna Wagner &  
Todd Aurit 3/17  
Sharon Flieds &  
Michael Dell 3/24  
Kyle Hoops &  
Cynthia McKiver 6/2  
LeRoy Fuehrer &  
Dianne Daly 9/28
- 1985  
Judy Kammerer &  
Francis Shupick 6/1  
Mary Merkel &  
Robert Slaba Jr. 6/15  
Corrina Freeman &  
Scott Holler 6/23  
LeeAnn Wagner &  
Kevin Maas 8/10  
Karleen Hoops &  
Scott M. James 8/11  
Pamela Rudnick &  
Nolan Thompson 10/12  
Bradley Larson &  
Darliiss Holder 10/25
- 1986  
Elaine Schuelke &  
James Rider 4/12  
Richard Nehls &  
Helen Swanson 5/21
- 1987  
Allen McKiver Jr.  
& Diane Dixon 8/15  
Merle Hanson &  
Carole Knoll 9/11
- 1989  
Ann Gengerke &  
Steven Gibbs 6/3  
Janine Rudnick &  
Morris Aldridge 6/10  
Diane Weishaar &  
John Schaefer 8/12  
Michael Dixon &  
Karen Gisi 11/18
- 1990  
Mary Ringer &  
Scott Fordham 4/7
- 1991  
Amy Knoll &  
Tal Harris 5/18  
Amber Wegner &  
David Stumpf 6/22  
Philip Adler &  
Lisa Nierman 6/29
- 1992  
Rebecca Flieds &  
Eric Larson 8/15  
Lisa Schaller &  
Ronnie Frericks 10/24
- \* ADDITIONS:  
1906  
Marie Wockenfuss &  
George Heuer 4/5  
1926  
Henry Bahr &  
Elizabeth Meyers 4/21



# DEATHS

**Martha Walter**  
 BD 10/3/1892 DD 00/00/00

**Else Erdmann**  
 BD 1/4/1897 DD 3/28/1897

**George H. Schornack**  
 BD DD 4/21/00

**Ora E. Erdmann**  
 BD 3/27/1898 DD 2/21/04

**Heinrich Lenling**  
 BD 5/18/1860 DD 2/16/05

**Erwin Reinke**  
 BD 4/12/02 DD 4/12/06

**Baby Stange**  
 BD 3/21/05 DD 9/23/07

**Ruby Stewart**  
 BD 8/14/07 DD 12/12/08

**Pearl Jost**  
 BD 9/20/09 DD 12/19/10

**Johanna Schinkel**  
 BD 1821 DD 1/20/12

**August Krueger**  
 BD 12/23/1851 DD 7/23/14

**Charlotte Seehafer**  
 BD 2/2/1843 DD 12/26/15

**Robert Schott**  
 BD 1/22/1851 DD 11/18/16

**Herman Hornemann**  
 BD 4/11/1850 DD 6/5/18

**Edward Neumann**  
 BD 3/19/1880 DD 10/19/18

**Anton Heuer**  
 BD 7/24/1888 DD 1/1/19

**Evelyn Thiemann**  
 BD 9/9/14 DD 9/23/19

**August Heckert**  
 BD 9/4/1836 DD 6/1/20

**Johann Schornack**  
 BD 12/21/1894 DD 4/29/21

**William Sieck**  
 BD DD 8/4/22

**Minnie Gengerke**  
 BD 6/13/1852 DD 11/8/23

**Christ Jensen**  
 BD DD 11/30/24

**Gerald May**  
 BD 7/18/25 DD 5/17/26

**John Schornack**  
 BD 1849 DD 7/27/27

**Ida Breitkreutz**  
 BD 6/29/22 DD 11/5/27

**Charles Jahnke**  
 BD DD 6/21/28

**Gustav Pasch**  
 BD 9/14/1856 DD 2/17/30

**August Mefs**  
 BD DD 6/10/30

**Max Bahr**  
 BD 5/15/1874 DD 2/6/31

**Lena Schornack**  
 BD 2/17/1882 DD 11/18/31

**Christina Schinkel**  
 BD 7/22/1847 DD 3/3/32

**Marie McCleery**  
 BD 2/27/11 DD 7/2/32

**George Schornack Sr.**  
 BD 4/13/1855 DD 6/10/33

**Ole Thompson**  
 BD DD 4/2/34

**Mabel Jost**  
 BD 3/2/14 DD 10/28/34

**John Radke**  
 BD DD 7/29/35

**John Kurtz**  
 BD 6/24/1851 DD 3/24/36

**Baby Amsden**  
 BD 3/3/37 DD 3/3/37

**Bertha A. Schornack**  
 BD 3/24/1895 DD 1895

**Ida Paetznick**  
 BD 6/28/1896 DD 4/14/1897

**Melvin J. Ogre**  
 BD DD 4/20/02

**Alexander Rose**  
 BD 10/21/1841 DD 5/31/04

**Landwig Larsen**  
 BD 4/17/1880 DD 8/14/05

**Elvina Erdmann**  
 BD 11/29/1899 DD 4/13/06

**Clifford Meng**  
 BD 5/15/07 DD 2/22/08

**Alwina Voigt**  
 BD 2/22/1851 DD 6/14/09

**Sophia Kaufmann**  
 BD 7/20/1839 DD 6/13/11

**Murdes Gengerke**  
 BD 4/13/11 DD 3/24/13

**Helene Brockmann**  
 BD 6/11/1860 DD 5/17/15

**Ernstine Kuehnert**  
 BD 8/21/1860 DD 4/1/16

**Heinrich Weihrauch**  
 BD 6/3/1848 DD 2/5/17

**John Quincer, Jr.**  
 BD 6/1/1846 DD 6/10/18

**Karl Neumann**  
 BD 7/4/1882 DD 10/20/18

**Cora Hankel**  
 BD 1/16/14 DD 3/10/19

**Robert Roettele**  
 BD 10/10/19 DD 10/18/19

**Wilhelm C. Schaller**  
 BD 6/19/20 DD 7/26/20

**Leroy Reinhardt**  
 BD 5/27/21 DD 8/26/21

**Earl Simonson**  
 BD DD 10/27/22

**Elizabeth Bahr**  
 BD DD 3/9/24

**Fred Voigt**  
 BD 1847 DD 3/12/25

**Wilehelm Luise**  
 BD DD 1/20/27

**Robert Kimmel**  
 BD DD 9/16/27

**Mrs. James Troy**  
 BD 1863 DD 11/22/27

**Chester Brown**  
 BD 5/1/28 DD 1/29/29

**Caroline Hollis**  
 BD DD 2/21/30

**Joan Holler**  
 BD 8/19/30 DD 8/19/30

**Arnold Gast**  
 BD DD 5/7/31

**Hazel Jaenicke**  
 BD 8/8/00 DD 11/20/31

**Julius Bloedorn**  
 BD 11/12/1849 DD 3/6/32

**Frank Breitkreutz**  
 BD 1/27/1854 DD 9/25/32

**Otto Schinkel**  
 BD 4/28/1863 DD 9/22/33

**Bud Smith**  
 BD DD 5/2/34

**Theresa Paetznick**  
 BD DD 1/3/35

**Martha Jaenicke**  
 BD 3/1/1862 DD 8/5/35

**Thomas Fehr**  
 BD 3/14/06 DD 1/10/37

**Elizabeth Von Wald**  
 BD DD 3/23/37

**Christian Weihrauch**  
 BD 1/29/05 DD 2/8/1896

**Franz J. Schornack**  
 BD 1878 DD 7/14/1897

**Henrietta Voigt**  
 BD 9/16/1825 DD 2/3/03

**Arthur E. Kuehnert**  
 BD 3/17/1899 DD 8/7/04

**Ruth Urban**  
 BD 2/6/06 DD 2/19/06

**Frederich Lafily**  
 BD 5/13/04 DD 4/24/06

**Martin Schmidt**  
 BD 2/12/08 DD 4/27/08

**Harrison G. Weihrauch**  
 BD 1/21/1883 DD 10/9/09

**Bertha Rose**  
 BD 4/29/1843 DD 7/25/11

**Hertha Reinke**  
 BD 6/20/13 DD 11/3/13

**Augusta Stellmecker**  
 BD DD 6/11/15

**Augusta Schmidt**  
 BD 3/5/1849 DD 10/13/16

**Joseph Kaufmann**  
 BD 8/26/1834 DD 6/3/17

**Edward Schultz**  
 BD 3/2/1891 DD 10/10/18

**Clyde Janike**  
 BD DD 12/11/18

**William Koepke**  
 BD 10/11/1836 DD 4/11/19

**Ida Hobus**  
 BD 8/20/1875 DD 11/17/19

**Richard Bell**  
 BD DD 9/24/20

**Wilhelmina Bloedorn**  
 BD 1/27/05 DD 2/16/22

**Ferdinand Lindert**  
 BD 3/31/1860 DD 2/4/23

**Ferdinand Schley**  
 BD 11/4/1843 DD 5/6/24

**Helen Schuelke**  
 BD 9/22/24 DD 5/26/25

**Frank Gengerke**  
 BD 1890 DD 3/6/27

**Robert Bradshaw**  
 BD 9/20/27 DD 9/30/27

**Ernest Ziesmann**  
 BD DD 12/11/27

**Sarah Townsend**  
 BD 3/29/1869 DD 8/13/29

**Fredricka Busch**  
 BD 11/4/1839 DD 3/15/30

**Carl Ziesmann**  
 BD 2/25/1897 DD 9/3/30

**Henrietta Radke**  
 BD DD 6/24/31

**Fred Ackermann**  
 BD DD 1/26/32

**Bertha Pasch**  
 BD 12/12/1861 DD 4/22/32

**Gustav Karnopp**  
 BD 3/8/1858 DD 11/22/32

**Elizabeth Schornack**  
 BD 4/7/1857 DD 2/10/34

**Emilie Erdmann**  
 BD 11/17/1858 DD 6/21/34

**Johanna Bulian**  
 BD DD 2/13/35

**John Rohwer**  
 BD 9/17/1864 DD 8/28/35

**Carl Brown**  
 BD DD 1/18/37

**Alexa Lenling**  
 BD 2/27/1870 DD 5/8/37

**Ernest Wockenfuss**  
 BD DD 3/15/1896

**Maria Karnopp**  
 BD 7/11/1827 DD 3/1/00

**Christian Voigt**  
 BD 11/3/1826 DD 4/4/03

**Anna Heuer**  
 BD 5/15/1883 DD 1/12/05

**Meta Koepsel**  
 BD 5/3/1867 DD 4/5/06

**Maria Heuer**  
 BD DD 1/13/07

**Caroline Jahnke**  
 BD 11/25/1855 DD 8/23/08

**Elmer Urban**  
 BD 12/13/09 DD 12/26/09

**Bertha M. Schornack**  
 BD 1867 DD 9/4/11

**Christoph Heuer**  
 BD 3/26/1851 DD 1/8/14

**Frieda Koepsel**  
 BD 1/22/1891 DD 7/6/15

**Anna K. Schott**  
 BD 11/24/1844 DD 11/11/16

**Florentina Hornemann**  
 BD DD 12/6/17

**Edward Violette**  
 BD 3/30/1898 DD 10/18/18

**Herman Heuer**  
 BD 10/15/1886 DD 12/26/18

**Augusta Bouness**  
 BD 6/3/1849 DD 8/10/19

**Goldie Seefeld**  
 BD 7/4/08 DD 4/2/20

**Herman Gengerke**  
 BD 6/18/1850 DD 4/17/21

**Arnold Zumm**  
 BD 1907 DD 6/11/22

**Frieda DeKlyen**  
 BD DD 10/11/23

**Selma Bahr**  
 BD DD 8/8/24

**Charles Reinhardt**  
 BD DD 3/7/26

**Johanna Wockenfuss**  
 BD 7/3/1862 DD 6/10/27

**Martha Krueger**  
 BD DD 10/20/27

**Ferdinand Bouness**  
 BD DD 3/25/28

**John Gengerke**  
 BD 6/17/1875 DD 8/16/29

**Fred Bohmbach**  
 BD 10/11/1879 DD 6/3/30

**Emma Weihrauch**  
 BD 6/23/1853 DD 2/4/31

**John Karnopp**  
 BD 9/9/1861 DD 11/9/31

**Gust Lenling**  
 BD 4/17/1856 DD 2/29/32

**Helmut Paetznick**  
 BD 6/5/1859 DD 6/15/32

**Gerald Beehuer**  
 BD DD 4/4/33

**Peggy Holler**  
 BD 12/2/33 DD 3/31/34

**Anna Jensen**  
 BD 6/6/1879 DD 7/13/34

**Minnie Siefkes**  
 BD 1899 DD 7/16/35

**Wallace Hoops**  
 BD 5/27/20 DD 10/18/35

**Gustav Bahr**  
 BD 6/13/1899 DD 1/26/37

**Gustav Ulrich**  
 BD 1/3/1866 DD 10/24/37



## DEATHS

Harold Wattier BD 4/16/21 DD 12/15/37	Paulina Ziesmann BD 1/20/1861 DD 3/10/38	Fred Meister BD 2/14/1872 DD 8/15/38	Caroline Krueger BD 7/27/1875 DD 8/22/38
Henry Odland BD 9/6/1865 DD 2/24/39	August Reinke BD DD 6/5/39	Bertha Voigt BD DD 7/23/39	Mary Knoll BD 12/14/1868 DD 10/6/39
Victor Odland BD 8/26/1895 DD 10/26/39	Elsie Thiemann BD DD 10/30/39	Paul Jaenicke BD 1/25/1855 DD 2/20/40	Mary Hoops BD DD 3/2/40
Charles Hoffner BD DD 3/24/40	Orin Knoll BD 2/5/40 DD 6/11/40	Elive Larsen BD 1/1/1873 DD 7/5/40	William Schaller BD 6/30/1889 DD 11/3/41
Frank Eske BD 1863 DD 11/21/41	Friedrich Schlichting BD 4/16/10 DD 2/12/42	Mary Jones BD 3/19/21 DD 5/12/42	Elisabeth Bohlkow BD DD 7/1/42
Maria Paetznick BD 1/30/1863 DD 7/22/42	Lena Meister BD 3/4/1882 DD 7/26/42	Frank Hopfner BD 4/13/1864 DD 10/9/42	Wilhelm Siefkes BD 12/4/1864 DD 11/2/42
Augusta Krueger BD DD 1/3/43	Albert Erdmann BD DD 1/7/43	Otto Ziesmann BD 2/20/1890 DD 1/23/43	Gust Kuehnert BD DD 5/21/43
William Dobberpuhl BD 10/7/1877 DD 5/27/43	Mrs. Frank Thiemann BD 2/4/1877 DD 12/11/43	Anna Reber BD 12/12/1860 DD 12/31/43	Ella Lehman BD 1/13/1884 DD 1/22/44
Lewis Kromback BD 1/29/1889 DD 2/2/44	Margaret Rohwer BD 12/9/1868 DD 2/14/44	Johann Knoll BD 10/5/1891 DD 3/23/44	Esther Rohwer BD 3/4/05 DD 6/17/44
Ernestine Linse BD 2/12/1863 DD 7/9/44	Victor Schuelke BD 11/29/43 DD 12/25/44	Inez Bahr BD 1/1/45 DD 1/1/45	Rae Reinhardt BD DD 4/11/45
Russell Erdmann BD 11/2/43 DD 4/14/45	Dorothy Kurtz BD 5/4/1858 DD 5/28/45	Ferdinand Erdmann BD 2/24/1861 DD 11/19/45	Herman Nehls BD 3/19/1866 DD 1/16/46
Elizabeth Wolfe BD DD 4/19/46	William Erdmann BD 5/30/1859 DD 7/9/46	Agnes Karnopp BD 7/19/1895 DD 11/29/46	Baby Schaller BD 12/2/46 DD 12/2/46
Charles Gengerke BD 8/25/1878 DD 12/8/46	Herman Urban BD DD 12/19/46	Carl Bahr BD DD 3/5/47	Mrs. Herman Schmidt BD DD 3/9/47
Marie Semme BD 10/19/1869 DD 5/19/47	Baby Paetznick BD DD 10/22/47	Joe Hoops BD 5/19/1860 DD 1/24/48	Anna Young BD 3/18/1872 DD 2/17/48
William Hopfner BD 9/6/1866 DD 12/21/48	Mrs. William Hopfner BD 5/24/1873 DD 1/10/49	Ida Reinke BD 5/21/1877 DD 2/10/49	Frank Jones BD 10/18/1878 DD 2/27/49
Glenn L. Peterson BD 8/16/29 DD 7/13/49	James M. Meister BD 9/23/49 DD 9/23/49	Arthur Dobberpuhl BD 1/25/1886 DD 10/29/49	Anna Erdmann BD 12/4/1886 DD 1/11/50
Anna Eske BD 9/15/1866 DD 1/21/50	Hulda Erdmann BD 2/24/1870 DD 8/28/51	Mary Totzke BD 11/28/1875 DD 11/27/51	F. H. Erdmann BD 1870 DD 12/28/51
Mary Karnopp BD 1/3/1866 DD 1/4/52	Michael Ahern BD 3/10/52 DD 3/17/52	Fredrick Kuehnert BD 4/22/1860 DD 7/10/52	Marion Meister BD 10/19/46 DD 8/27/52
William J. Koehler BD 11/26/1864 DD 1/7/53	Louie Schornack BD 9/12/1879 DD 1/20/53	Baby Neumann BD 4/11/53 DD 4/11/53	Betty Fliehs BD 4/26/35 DD 4/29/53
Bertha Brendemuhl BD 10/23/1858 DD 5/4/53	Elmer Reinhardt BD 9/30/1879 DD 7/4/53	Frank Nehls BD 2/24/05 DD 10/19/53	Mrs. Frank Hopfner BD 2/28/1870 DD 8/29/54
Mathilda Kimmel BD 1/5/1869 DD 9/6/54	Joe Hoops BD 2/5/1891 DD 12/25/54	Henry Paetznick BD 10/30/1898 DD 3/24/55	Bertha Erdmann BD 4/22/1867 DD 11/22/55
Guy Herron BD 00/00/1888 DD 12/2/55	Albert Sombke BD 2/4/1898 DD 2/11/56	August Schliebe BD 7/4/02 DD 3/5/56	Rose Meredith BD 2/5/01 DD 5/2/56
Mrs. O. S. Thiemann BD 5/2/1882 DD 5/21/56	Harry Bahlkow BD 12/22/1884 DD 6/1/56	Mrs. Joe Jost BD 3/18/1872 DD 6/24/56	Hans G. Leonhardt BD 6/26/1898 DD 9/3/56
Ronald Jensen BD 11/17/54 DD 10/13/56	Paul Linse BD 10/12/1890 DD 12/18/56	Mathilda Neumann BD 1/24/09 DD 3/10/57	Herman O. Pigors BD 3/5/1876 DD 6/26/57
Flora Bahr BD 9/12/1877 DD 7/22/57	William Stange BD 1/24/1863 DD 3/5/58	Herman Schmidt BD 12/18/1866 DD 4/14/58	Bertha Schinkel BD 6/11/1875 DD 4/19/58
Louis H. Sr. Eske BD 1/11/1897 DD 5/5/58	Olga Schornack BD 8/24/1889 DD 5/15/58	Emma Schroeder BD 10/28/1890 DD 5/18/58	Arthur Schumacher BD 3/5/10 DD 10/18/58
Larry D. Bahr BD 3/5/52 DD 1/22/59	Ida Schinkel BD 3/4/1874 DD 1/22/59	George E. Schornack BD 4/26/1891 DD 3/22/59	Hubert O. Breitkreutz BD 5/7/1884 DD 7/14/59
Anna M. Louise Hoops BD 9/2/1897 DD 9/19/59	Elizabeth Bahr BD 10/27/1882 DD 10/13/59	August Erdmann BD 11/15/1862 DD 11/10/59	Christ E. Jensen BD 12/7/1877 DD 1/6/60
Emma Stange BD 12/22/1868 DD 1/21/60	Bertha Koehler BD 2/10/1874 DD 9/4/60	Richard Sr. Fliehs BD 3/18/1895 DD 11/17/60	Minna Pigors BD 4/19/1884 DD 3/28/61
Mrs. Herman Hasemann BD 5/1/1887 DD 4/16/61	Alfred Pigors BD 7/2/22 DD 6/29/61	Edna Pasch BD 9/18/1883 DD 10/16/61	Mrs. Val Von Wald BD 4/1/1888 DD 12/4/61
Mrs. Fred Harms BD 11/20/1894 DD 2/8/62	Joseph Osman BD 11/23/1884 DD 2/20/62	Amanda Dobberpuhl BD 10/10/1884 DD 2/22/62	Mary Keup BD 3/8/1876 DD 12/19/62
Julius Karnopp BD 11/23/1889 DD 1/19/63	Mrs. Arthur Dobberpuhl BD 1/10/1891 DD 3/10/63	Susan Johnson BD 1/5/1896 DD 5/3/63	Vern Siefkes BD 9/16/1895 DD 5/13/63
Mrs. Gordon Gilbertson BD 3/4/39 DD 7/31/63	Louise Radke BD 12/12/1896 DD 12/20/63	Herman Gengerke BD 1/31/1890 DD 4/2/64	Elmer Herron BD 7/26/09 DD 5/3/64
Dale Meister BD 1/31/44 DD 6/4/64	Earl H. Lehmann BD 9/8/1871 DD 8/16/64	Louis F. Breitkreutz BD 4/8/1888 DD 9/4/64	Magdalene Rosenow BD 4/9/1880 DD 3/24/65
Richard O. Kroll BD 3/5/1893 DD 4/19/65	John Rohwer BD 10/9/1890 DD 4/30/65	Oscar Thiemann BD 1/18/1874 DD 5/20/65	George M. Sippel BD 3/22/1885 DD 5/24/65
Frank Young BD 4/7/1894 DD 6/6/65	Bertha Jensen BD 9/2/1881 DD 6/11/65	James Schuelke BD 1/9/49 DD 9/10/65	Ralph J. Hoops BD 8/15/17 DD 10/17/65
Jay R. Reber BD 6/15/66 DD 6/15/66	Timothy A. Tullis BD 4/18/66 DD 8/13/66	Alma F. Wage BD 1/10/1894 DD 8/27/66	Minerva Stueber BD 3/31/1885 DD 3/7/67
Alvin A. Hoops BD 12/21/1894 DD 4/24/67	Anna M. Zoellner BD 5/26/1875 DD 5/28/67	Frank H. Moldenhauer BD 5/12/1891 DD 5/31/67	Robert L. Bradshaw BD 3/25/1885 DD 6/29/67



## DEATHS

<b>Ruby Hinkelman</b> BD 12/17/09 DD 11/2/67	<b>Bernhardt W. Miller</b> BD 9/20/42 DD 11/10/67	<b>George Karnopp</b> BD 9/14/1891 DD 12/19/67	<b>Carol Schuelke</b> BD 4/23/28 DD 12/27/67
<b>Edward Schuelke</b> BD 8/22/55 DD 12/27/67	<b>Herman A. Stange</b> BD 3/20/1899 DD 1/31/68	<b>Ervin Mortenson</b> BD 3/31/38 DD 2/5/68	<b>Ernest F. Pasch</b> BD 9/10/20 DD 2/21/68
<b>Martha Paepke</b> BD 9/14/1888 DD 3/16/68	<b>William E. Pasch</b> BD 10/3/47 DD 5/11/68	<b>Mrs. George Siefkes</b> BD 3/22/20 DD 6/15/68	<b>Earl J. Meredith</b> BD 2/14/1894 DD 3/12/69
<b>Anton H. Bloedorn</b> BD 3/16/1889 DD 4/16/69	<b>Roy H. Schott</b> BD 00/00/1894 DD 4/26/69	<b>Harold P. Ott</b> BD 1/26/00 DD 5/2/69	<b>Frank H. Jensen</b> BD 00/00/1882 DD 6/17/69
<b>Norman D. Shannon</b> BD 9/2/36 DD 8/9/69	<b>Brandson S. Stange</b> BD 00/00/68 DD 9/4/69	<b>Arthur H. Neuman</b> BD 10/16/1890 DD 11/3/69	<b>Arthur H. Radke</b> BD 5/300/1897 DD 11/17/69
<b>Walter Neldon</b> BD 5/21/00 DD 12/19/69	<b>Arthur J. Schuelke</b> BD 11/28/1891 DD 2/8/70	<b>Myrtle Nehls</b> BD 6/7/1885 DD 2/23/70	<b>Fred H. Nehls</b> BD 8/17/1895 DD 3/14/70
<b>Mary Gebhardt</b> BD 7/29/1884 DD 4/8/70	<b>Ida Pigors</b> BD 12/3/1889 DD 7/4/70	<b>Cora Jaeschke</b> BD 12/13/10 DD 7/23/70	<b>Hans A. Emmen</b> BD 4/3/00 DD 8/11/70
<b>Helen Brooks</b> BD 10/7/06 DD 9/2/70	<b>Alfred U. Erdmann</b> BD 10/12/02 DD 9/2/70	<b>Ed L. Fredrickson</b> BD 7/11/1899 DD 9/14/70	<b>Herman Jensen</b> BD 12/14/1888 DD 12/15/70
<b>Lydia A. Jones</b> BD 8/3/1888 DD 2/27/71	<b>Deno Erdmann</b> BD 6/12/1892 DD 3/19/71	<b>Arthur Voight</b> BD 7/4/1898 DD 7/6/71	<b>Ora Schuelke</b> BD 11/17/15 DD 8/2/71
<b>William H. Koehler</b> BD 11/13/02 DD 8/30/71	<b>Norman Hassenpflug</b> BD 00/00/09 DD 3/19/72	<b>Donald Feller</b> BD 11/20/04 DD 5/3/72	<b>Frank E. Wilke</b> BD 8/17/1895 DD 7/26/72
<b>Fred C. Zoellner</b> BD 6/30/03 DD 8/29/72	<b>Herbert Siek</b> BD DD 12/4/72	<b>Henry G. Wehrauch Jr</b> BD 10/21/1896 DD 1/9/73	<b>Mathilda Schuelke</b> BD 8/15/1890 DD 5/23/73
<b>Lillie M. Sippel</b> BD 10/6/1888 DD 7/28/73	<b>Richard Dorfschmidt</b> BD 9/22/1897 DD 11/19/73	<b>Gustav Oldenburg</b> BD 8/14/1898 DD 3/15/74	<b>Wesley T. Reber Jr.</b> BD 11/6/68 DD 6/19/74
<b>Alvina M. Moldenhauer</b> BD 10/3/01 DD 6/25/74	<b>Olga Suurmeyer</b> BD DD 7/9/74	<b>Wilbur R. Hein</b> BD 6/20/21 DD 9/10/74	<b>George L. Krueger</b> BD 2/18/1877 DD 4/24/75
<b>Ervin L. Meister</b> BD 11/6/07 DD 8/8/75	<b>Hugo Siek</b> BD 5/5/1897 DD 12/23/75	<b>Laura Lenling</b> BD 8/5/1888 DD 1/15/76	<b>John J. Johnson</b> BD 7/6/1891 DD 1/29/76
<b>Max Oschmann</b> BD DD 2/10/76	<b>Orley Skogen</b> BD DD 3/26/76	<b>Val Von Wald</b> BD 11/16/1884 DD 5/14/76	<b>Esther Israel</b> BD 4/28/1890 DD 6/7/76
<b>George Koehler</b> BD 10/23/1897 DD 10/12/76	<b>Dorothy Martin</b> BD 11/7/18 DD 11/23/76	<b>Erich Neumann</b> BD 5/24/00 DD 3/9/77	<b>Shirley Adler</b> BD 8/22/37 DD 4/20/77
<b>Georgia Meister</b> BD 4/22/12 DD 7/3/77	<b>Sherry Schaller</b> BD 10/12/60 DD 9/5/77	<b>Elvis Hinkelman</b> BD 10/10/77 DD 10/10/77	<b>Lyle Nehls</b> BD 3/10/29 DD 10/30/77
<b>Paul O. Krueger</b> BD 1/25/11 DD 11/21/77	<b>Myron H. Rose</b> BD 7/10/43 DD 12/28/77	<b>Dorothea Jensen</b> BD 8/29/1899 DD 1/28/78	<b>Vernita Johnson</b> BD 12/2/14 DD 2/11/78
<b>Minnie J. Ulrich</b> BD 12/29/10 DD 2/18/78	<b>Esther Holler</b> BD 10/14/07 DD 5/13/78	<b>Arlys Ehrenberg</b> BD 8/17/35 DD 9/4/78	<b>Mrs. George Brendemuhl</b> BD DD 9/20/78
<b>Hattie A. Krueger</b> BD 4/8/15 DD 10/22/78	<b>Leslie W. Honey</b> BD DD 2/21/79	<b>Ida Lenling</b> BD 10/3/1882 DD 2/28/79	<b>Lucille Knoll</b> BD 2/11/30 DD 6/22/79
<b>Ada Lyle</b> BD 00/00/09 DD 7/6/79	<b>Henry Reinhardt</b> BD 9/2/1885 DD 7/14/79	<b>August F. Lier</b> BD 12/12/1896 DD 10/3/79	<b>Julia Smith</b> BD 10/22/1881 DD 10/25/79
<b>Eugenia Gengerke</b> BD 7/3/1886 DD 11/26/79	<b>Bernhard C. Lorenz</b> BD 12/9/1895 DD 12/5/79	<b>John Shannon</b> BD 6/18/1893 DD 12/24/79	<b>Rose A. Kellison</b> BD 4/14/05 DD 1/20/80
<b>Anna Schott</b> BD 3/7/1898 DD 2/13/80	<b>Marguerite Cowan</b> BD 5/20/03 DD 2/24/80	<b>Marcus Holler</b> BD 3/29/10 DD 2/25/80	<b>George Brendemuhl</b> BD 00/00/1884 DD 10/21/80
<b>Myrtle Dorfschmidt</b> BD 12/17/03 DD 10/29/80	<b>Elenora A. Emmen</b> BD 3/21/06 DD 12/16/80	<b>Marcella Ott</b> BD DD 2/8/81	<b>Herbert H. Hinkelman</b> BD 10/12/04 DD 8/5/81
<b>Charles E. Jaeschke</b> BD 8/12/04 DD 10/18/81	<b>Albert P. Lorenz</b> BD 2/21/1899 DD 1/13/82	<b>John Stange</b> BD 5/17/1899 DD 1/20/82	<b>Helmuth H. Paetznick</b> BD 10/7/35 DD 5/23/82
<b>Myrtle Morey</b> BD 11/7/08 DD 10/22/82	<b>Gerald Jaeschke</b> BD 3/14/33 DD 11/4/82	<b>Ella Leonhardt</b> BD 7/29/1898 DD 11/14/82	<b>Albert Wehrauch</b> BD 4/14/06 DD 12/13/82
<b>Dorothy Schmidt</b> BD 12/29/15 DD 12/28/82	<b>George Siefkes</b> BD 10/2/25 DD 1/10/83	<b>Elda Feller</b> BD 1/9/06 DD 2/4/83	<b>Agnes Wehrauch</b> BD 5/8/1899 DD 2/26/83
<b>Marian Wilcox</b> BD 7/27/38 DD 3/1/83	<b>Rachel Schaller</b> BD 10/5/1895 DD 3/2/83	<b>Alroy Pasch</b> BD 9/9/53 DD 6/18/83	<b>Minnie McKiver</b> BD 9/23/1888 DD 7/12/83
<b>Martin Lakemaker</b> BD 6/19/10 DD 9/27/83	<b>Marvin S. Erdmann</b> BD 4/7/17 DD 11/6/83	<b>Emil Suelztz</b> BD DD 11/25/83	<b>Lydia Borchard</b> BD 3/14/12 DD 11/27/83
<b>Emma Wilcox</b> BD 4/29/1889 DD 1/2/84	<b>Dora Nehls</b> BD 9/24/1893 DD 5/5/84	<b>Leonard H. Schmidt</b> BD 9/7/07 DD 11/29/84	<b>Amanda Lorenz</b> BD 12/12/1898 DD 1/2/85
<b>Selmer Ellingson</b> BD 1/18/07 DD 1/21/85	<b>Bertha A. Koehler</b> BD 2/28/1898 DD 2/18/85	<b>Myron Erickson</b> BD 5/26/27 DD 6/10/85	<b>Louise M. Hoops</b> BD 7/24/1898 DD 8/22/85
<b>Lloyd Neumann</b> BD 3/28/35 DD 9/9/85	<b>Dorothy Honey</b> BD 1/23/17 DD 9/28/85	<b>Waldemar Lenling</b> BD 5/14/08 DD 10/18/85	<b>Albert Jaeschke</b> BD 4/18/07 DD 11/30/85
<b>John H. Nehls</b> BD 4/2/1897 DD 1/11/86	<b>Leo F. Udelhofen</b> BD 6/6/1898 DD 1/18/86	<b>Alex P. Krueger</b> BD 4/28/09 DD 1/20/86	<b>Meta Hoops</b> BD 9/29/1893 DD 3/30/86
<b>Emma Kroll</b> BD 4/6/1896 DD 8/30/86	<b>Vesta Nack</b> BD 7/27/03 DD 11/1/86	<b>Donald Craig</b> BD 7/21/19 DD 2/20/87	<b>Henrietta Herron</b> BD 10/17/24 DD 3/26/87
<b>Roy C. Hoops</b> BD 3/9/06 DD 6/7/87	<b>Ralph H. Nehls</b> BD 7/29/22 DD 6/14/87	<b>Howard O. Nehls</b> BD 7/24/22 DD 10/14/87	<b>Irene Breikreutz</b> BD 3/23/1894 DD 11/4/87
<b>Ella Osman</b> BD 4/27/1890 DD 11/13/87	<b>Oscar Paetznick</b> BD 10/2/1890 DD 2/1/88	<b>Herman F. Hiepler</b> BD 5/2/02 DD 3/20/88	<b>Edvina Neumann</b> BD 10/31/1898 DD 4/18/88
<b>Emily Herron</b> BD 12/27/1891 DD 6/16/88	<b>Walter Nack</b> BD 7/10/08 DD 10/20/88	<b>Walter Erdmann</b> BD 4/10/06 DD 1/7/89	<b>Clarence Georgens</b> BD 2/1/08 DD 1/15/89
<b>Ralph Karnopp</b> BD 1/2/17 DD 4/23/89	<b>Erna Lorenz</b> BD 11/12/02 DD 7/9/89	<b>Lillian Lakemaker</b> BD 12/18/11 DD 9/1/89	<b>Hertha Schumacher</b> BD 10/22/02 DD 9/18/89



## DEATHS

Ernest Bugner  
BD 12/25/10 DD 11/26/89

Harry Sippel  
BD 8/26/16 DD 7/13/91

Katherine Eske  
BD 7/25/1893 DD 8/31/91

Herbert A. Falk  
BD 12/17/25 DD 5/16/92

Albert Tullis  
BD DD 1/8/93

Arthur H. Olson  
BD 1/14/16 DD 1/31/90

Sarah Reber  
BD 3/25/03 DD 7/20/91

Louise R. Mielke  
BD 9/20/07 DD 2/1/92

Agnes E. Comp  
BD 12/16/07 DD 9/11/92

Jerrold Koehler  
BD 7/24/31 DD 4/18/93

Hertha Karnopp  
BD 9/27/1895 DD 1/2/91

Kelsey Jo Herron  
BD 8/11/91 DD 8/11/91

Roy Mielke  
BD 8/31/07 DD 3/9/92

Chester C. Johnson  
BD 5/14/14 DD 10/8/92

Richard Feser  
BD DD 4/22/93

Bertha Bradshaw  
BD 9/27/1895 DD 2/4/91

Lorna Lenling  
BD 12/23/02 DD 8/19/91

Henry E. Lehman  
BD 9/5/05 DD 3/30/92

Marquerita Eske  
BD 10/30/00 DD 11/26/92



## CURRENT MEMBERSHIP

ADLER, Philip & Lisa,	BAHR, Doug	BAHR, Loren Kerry, Justin	BAHR, Orville & Donna,
BORCHARD, Henry	BRIGGS, Shirlee Amanda, Amy	BUGNER, Edna	CAMPBELL, Sylvia
CHRISTIANSON, Mark & Joleen, Christian, Taylor, Micah	CRAIG, Doris	DIRKS, Charles	DIRKS, Martin & Gladys,
DOBBERPUHL, Augusta	EHRENBERG, Brian	EHRENBERG, Doug	EHRENBERG, Douglas
ELLINGSON, Dora	ERDMAN, Bill	ERDMAN, Bob Janette	ERDMAN, Fred Zachery
ERDMAN, JR., Bob	ERDMANN, Emily	ERDMANN, Mabel	ERICKSON, Gertie
ERICKSON, Tracey	FAILONI, Lena	FALK, Shane Jason Spencer	FELKEY, Howard & Betty, Daniel
FELKEY, Michael	FESER, Aaron	FESER, Judy Heather, Carrie, Adam	FLIEHS, Darrel & Mary,
FLIEHS, Dick & Judy,	FLIEHS, Duane & Rhonda, Jordan, Abby	FLIEHS, Harvey & Bernice,	FLIEHS, Harvey Jr. Harvey III
FLIEHS, Irv & Janice,	FLIEHS, Lance	FLIEHS, Larry & Val, Jeff, Dawn	FLIEHS, Rich
FLIEHS, Tim & Peggy, Robin, Michelle, Blake	FORDHAM, Mary	FREDRICKSON, Jo	FUEHRER, Kevin Mason
FUEHRER, Tim	GEFFRE, Karry	GENGERKE, Art & Linda,	GENGERKE, Collin
GENGERKE, Howard	GENGERKE, Marvin & Marie,	GEORGENS, Delores	GIEDT, Steve & Lori, Desiree, Heath
HAMMOND, Amanda	HANSON, Carole Kevin Knoll	HARDER, Brian	HARDER, Corey
HARDER, Merle & Janet, T.J., Adam	HARRY, Larry	HEIN, Tricia	HEIN, Wayne & Patty, Cheryl, Tammy, Debra, Jackie
HENDRICKSON, Darrel & Deanna, Beth	HENDRICKSON, Jeff Dustin	HENLEY, Don & Lavanda,	HERRON, Alvina
HERRON, Debbie Michael Protas	HERRON, Leroy	HERRON, Steve & Tami, Cody, Zachary	HERRON, Terry & Lori, Jamie, Colin
HERTHER, Derrick	HEWITT, Christine Houston, Hallie	HIEPLER, Alvina	HINKELMAN, Gilbert & Rochelle, Delbert
HJERMSTAD, Randy & Sandy, Adam Drew Lee Aaron Sadie	HOLLER, Corrina	HOOPS, Cliff & Beulah,	HOOPS, Helena
HOOPS, Kelly	HOOPS, Kolin	HOOPS, Ron & Maralyn,	IRON HEART, Shane
JAESCHKE, Randy	JAMES, Karleen Blake	JOHNSON, Chuck & Sheila, Kayla	JOHNSON, Joan Jerry Ray
KARNOPP, Sylvia	KNAPP, Julia	KNOLL, Crystal	KNOLL, Richard & Bev, Bill Berger
KRAUSE, Bill & Verna,	KRUEGER, David & Cheryl, Shonna, Darin	KRUEGER, Doug & Heidi, Jeff	KRUEGER, Joyce Roger, Dan, Kevin
KRUEGER, Louis	KRUEGER, Lucille	KRUEGER, Paula	LARSEN, Earl & Hilda,
LARSON, Brad & Darliss, Rachel, Samantha	LARSON, Dennis & Ruby,	LARSON, Jeff	LEHMAN, Dorothy



## CURRENT MEMBERSHIP

LEHMAN, Reuben & LaVerna,	LEIDHOLT, James	LEIDHOLT, Larry & Gloria, Tabitha	LEMKE, Charity
LEMKE, Chas	LENLING, Connie	LENLING, Margaret	LEONHARDT, Delbert & Ellen, Betsy
LEONHARDT, George & Delores,	LEONHARDT, Landal & Michelle, Kathryn, Karen	LEONHARDT, Terry	LEONHARDT, Tom
LONG, Bernard & Dianne, Christina, Jennifer	MAESTAS, Susan Katrina, Scott	MARTIN, Bert & Leslie,	MAY, Marvin & Marion,
MCCULLOUGH, Verne & Bev,	McKIVER, Allen & Cheryl,	McKIVER, Bill & Carol, Travis, Megan	McKIVER, Dale & Marge,
McKIVER, Jeri	McKIVER, JR., Allen	MEISTER, Charles & Virginia,	MEISTER, Jim
MEREDITH, Anita	MERKEL, Allan	MERKEL, Bruce & Pam, Lanny, Brett	MERKEL, Lou & Myrtle,
MERKEL, Terry Heather	MIELKE, Harvey	MIELKE, Louise	MOREY, Chancy
NEFF, Ed & Janet, John	NEFF, Jen	NEHLS, Richard & Helen,	NEHLS, Roy
NEHLS, Spike & Pat,	NEHLS, Stella	NEITZEL, Burt & Bernice,	NELDON, Minnie
NELSON, Corey	NELSON, Gordon & Dorene,	NEUHARDT, Destri	NEUHARDT, Jim & Janice,
NEUMAN, Eugene & Alvera,	NEUMANN, Duane & Dodie,	NEUMANN, Mary	NEUMANN, Scott
NIERMAN, Alan & Bonnie, Chad, Jesse	OLDENBURG, Lydia	OLSON, Irma	PAETZNICK, Martha
PAPOUSEK, Melissa	PASCH, Don	PASCH, Walter & Lois,	PATTON, Susan Michelle, Michael
PETERSON, Arlene	PRAY, Bob Jr. & Laurie, Courtney, Charles	PRAY, Cliff	PRAY, Jim & Barbara,
PRAY, Kelly	PRAY, Michelle	PRAY, Paula	PRAY, Tami Kevin, Lisa, Jasper
PULLAN, Freddie & Melodee, Jason	RAETHKE, Angela	REHFUSS, Eldy & Irene,	RINGER, Scott
RINGER, Tammy	RINGER, JR., Frank	RINGGENBERG, Dale Jeff	RIX, Nora
ROHWER, Lawrence & Annabeth,	ROSE, Emil & Lillian,	ROSENOW, Frank & Lorine,	SCHALLER, Ben & Jean,
SCHALLER, Lora	SCHALLER, Niki	SCHALLER, Orville & Joyce,	SCHALLER, Wally
SCHORNACK, Howard & Harriet,	SCHUELKE, Bill & Eileen, Jackie, Austin	SCHUELKE, Nikki	SCHUELKE, Rob & Neola,
SCHUELKE, Wini	SIEFKES, Vern & Lois,	SIEH, Wendy	SIEK, Leona & Elda Stange
SIEK, Margaret	SIENICKI, Myrna	SIPPEL, Bruce & Vickie, Lisa, Emily, Felicia	SIPPEL, Lester & Hilda,
SIPPEL, Lorraine	SIPPEL, Marvin & Margaret, Marty	SIPPEL, Mary Ann	SOMBKE, Chad
SOMBKE, Curtis & Janice,	SOMBKE, Jill	SOMBKE, Kiersten	STANGE, Frieda



## CURRENT MEMBERSHIP

STANGE, Wayne	STARKS, Jody	STEARNS, Jim & Linda, Lester Steph Lauren Sam JJ	STUMPF, Amber
SUELTZ, Alfred & Alma,	THURSTON, Lyle & Volley,	THURSTON, Stephanie	THURSTON, Steve
THURSTON, Timothy	TULLIS, Cheryl	TULLIS, Delwin Glenda, Jesse	TULLIS, Lillian
TULLIS, Sharon	UDELHOFEN, Margery	VIK, Joseph & Reatha,	VOIGHT, Emma
VON WALD, Clarence	WAGNER, Carroll & Billie,	WEGNER, Bob & Jeannette, Matthew	WEIHRAUCH, Betty
WEIHRAUCH, Ella	WEISENBERGER, Leeroy & Vera,	WEISENBERGER, Terry	WENSCHLAG, Mae
WERNER, Rebecca	WERNER, Rev John & Martha,	WHEETING, John & Chris, Meagan, Lauren	WILLETT, Carmel Christopher, Nicholas
YESKE, Jason	ZOELLNER, Earl	ZOELLNER, Isabelle	



***A SPECIAL THANK YOU***

Centennial Chair Family	Robert E. & Neola L. Schuelke
Centennial History & Book Layout	Robert E. Schuelke
Statistical Compilation	Betty Weihrauch, Chairperson
Congregational Sons & Daughters	Emily Erdmann, Chairperson
Pictures of Former Pastors & Confirmands	Lois Pasch, Chairperson
Line Drawing of Old Churches	Martha Werner
Centennial Book Typing	Eileen Schuelke
Souvenirs	Ron & Maralyn Hoops
Publicity	Judy Fliehs
Dinner Furniture Arrangement	Verne McCullough, Chairman
Centennial Banner	Jean Schaller
Dinner Decorations	Bev Knoll, Chairperson
Centennial Reception	
Saturday	Bev Knoll, Chairperson
Sunday	Lavanda Henley, Chairperson
Reminiscent Video	Duane Neumann



