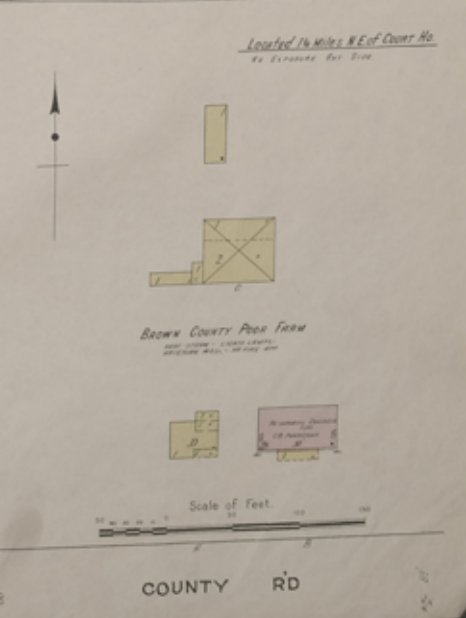
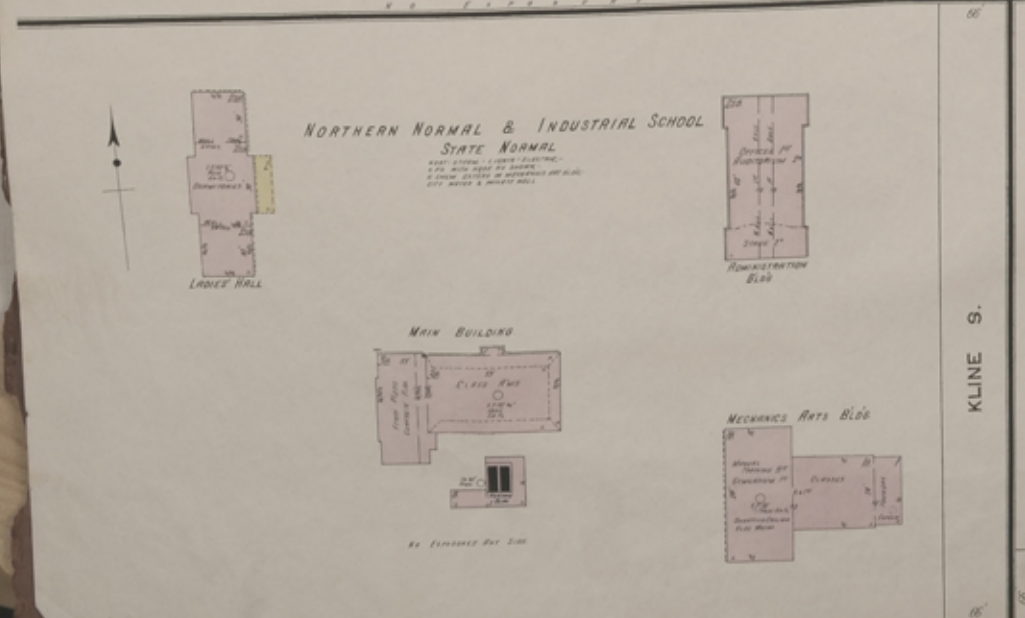
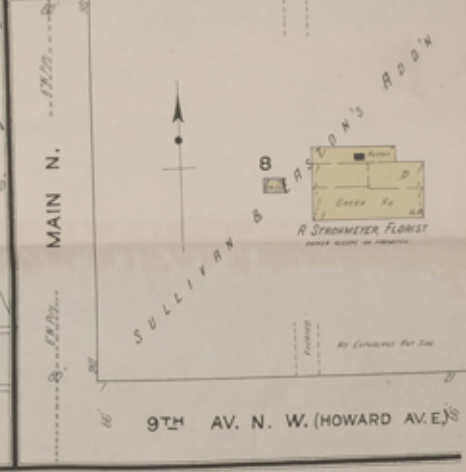
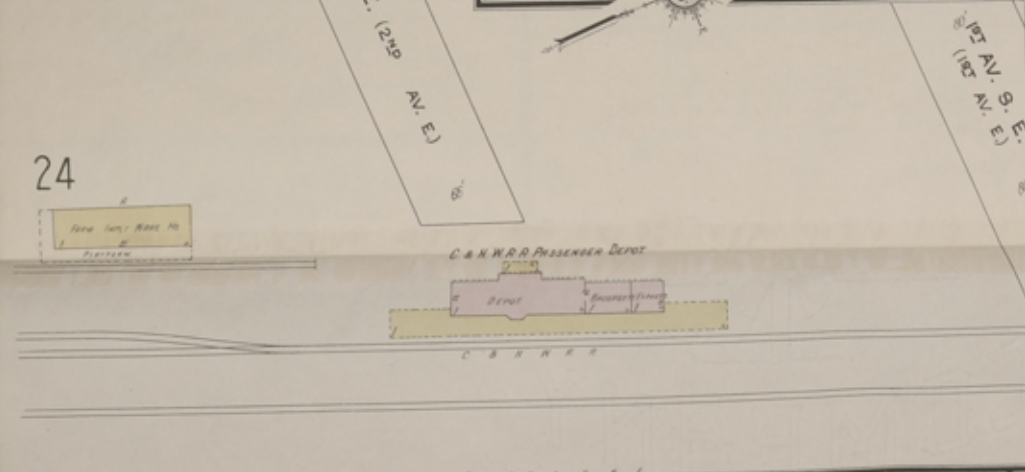
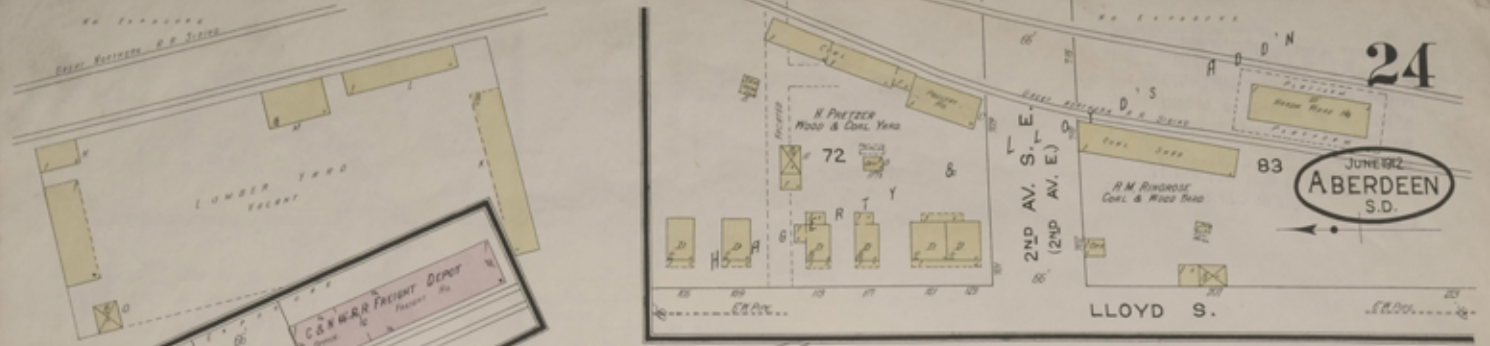


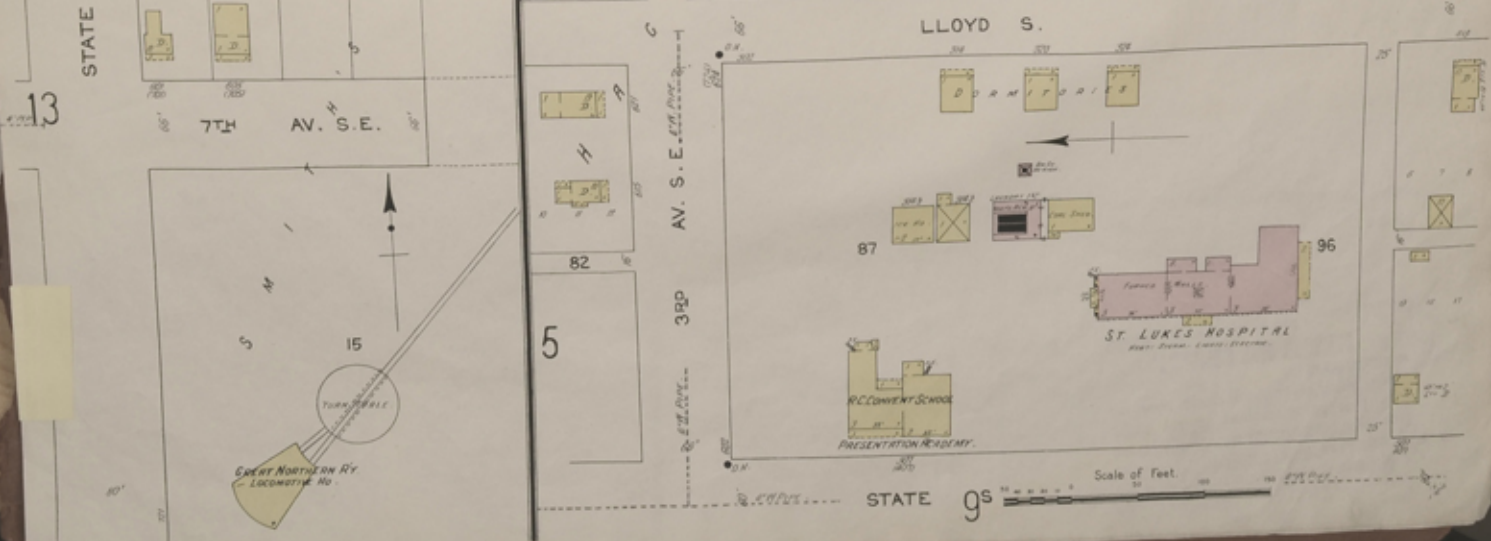
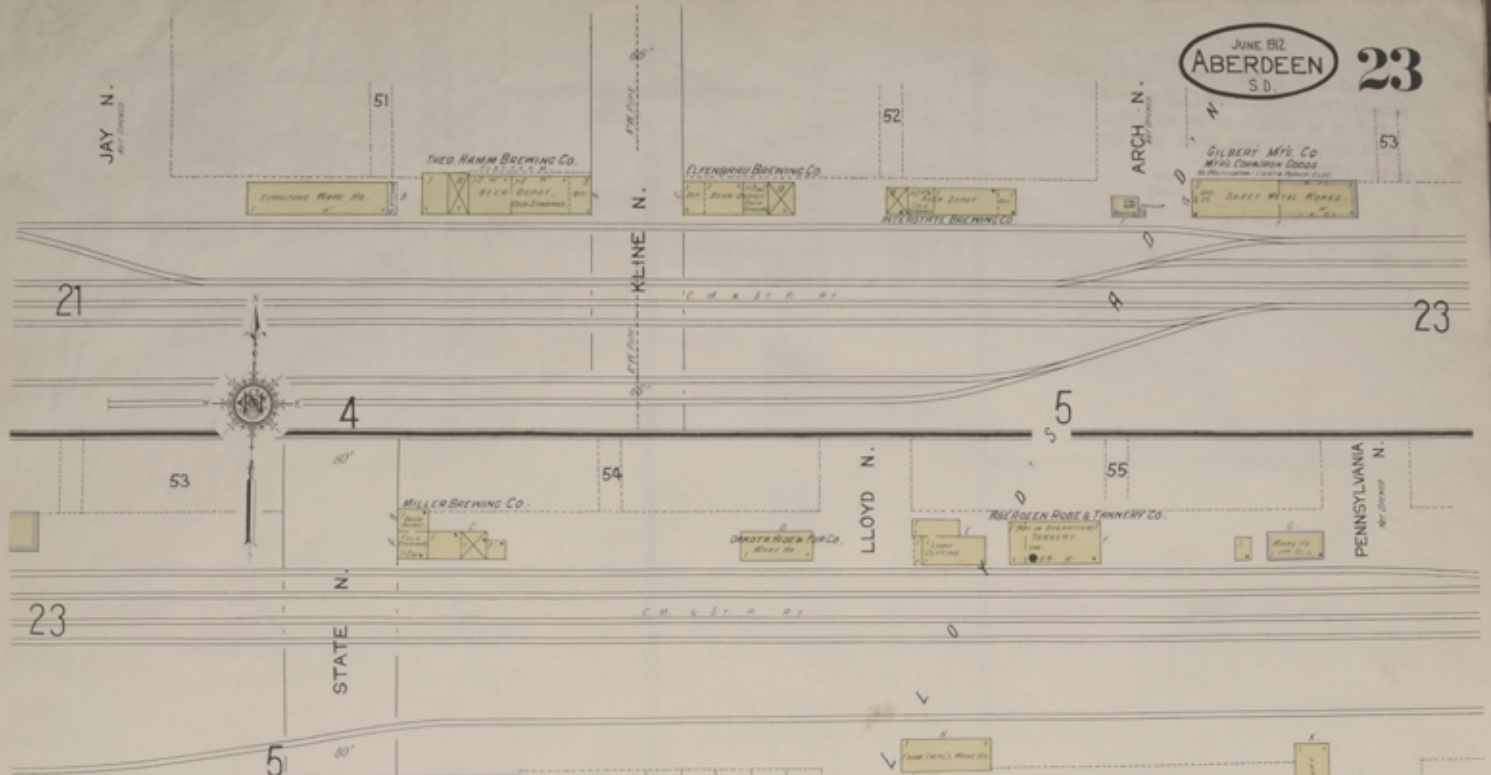
JUNE 1912
ABERDEEN
S.D.



Located in Miles NE of Court Ho.
By Entrance on Side

Scale of Feet

COUNTY RD



JAY N.
 STATE S.
 ARCH N.
 KLINE N.
 LLOYD N.
 PENNSYLVANIA N.
 STATE S.
 LLOYD S.

51
 52
 53
 54
 55
 58
 59
 68
 69
 82
 87
 96

THEO HAMM BREWING CO.
 ELLENBERG BREWING CO.
 MILLER BREWING CO.
 RICHARD ROBE & TINNERY CO.
 CENTRAL LUMBER CO. WHOLESALE DEPT.
 ST. LUKE'S HOSPITAL
 R.C. CONVENT SCHOOL
 PRESENTATION ACADEMY

TURNPIKE
 GREAT NORTHERN RY. LOCOMOTIVE NO.

Scale of Feet

2ND AV. N.E.

1ST AV. N.E.

1ST AV. S.E.

21
N.

20

MAIN

2ND ST. S.

3

JUNE 1912
ABERDEEN
S. D.

17



1ST ST. N.

C. M. & S. P. R. PASSENGER DEPOT

C. M. & S. P. R. FREIGHT DEPOT

RAILROAD AV. S. W.

2

AV. N. W. (MAPLE AV. W.)

AV. N. W. (WALNUT AV. W.)

2ND ST. N.

2ND ST. N.

GOULDING & WIFE CO.
S. W. CORNER 1ST ST. N. & 2ND ST. N.

14

37

40

BENNETT & THOMAS BROS. TO NORTH ABERDEEN

25

6TH AV. N.E.
(PINE AV.)

11TH AV. S. E.

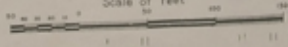
THE POINT SHARP
PLUM CO.
THOMAS ADD'N.

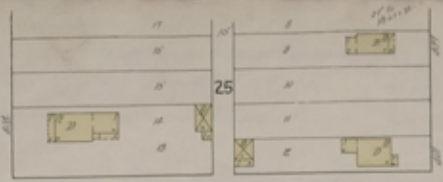
35

MAIN N.

WASHINGTON AV. S. W. CORNER

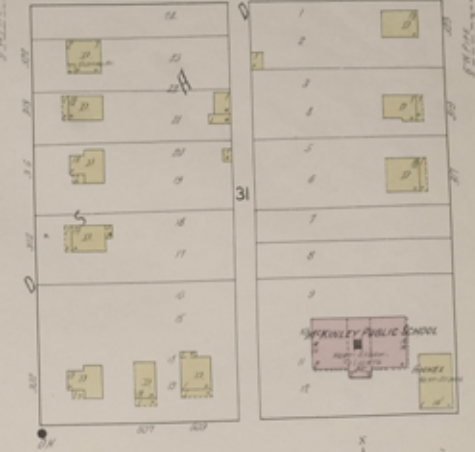
Scale of feet



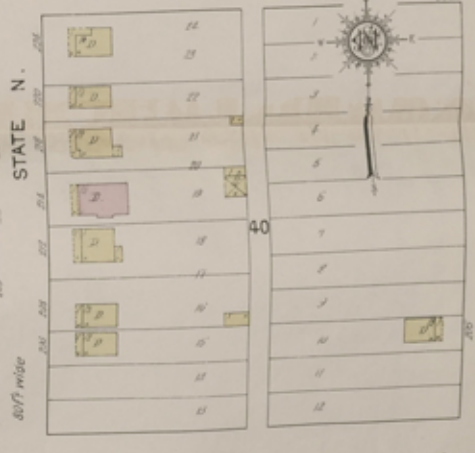
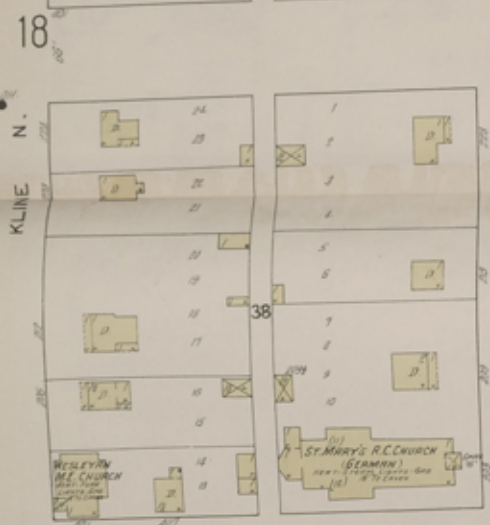


JUNE 1912
ABERDEEN
 S. D.

4TH AV. N. E. (ELM AV. E.)

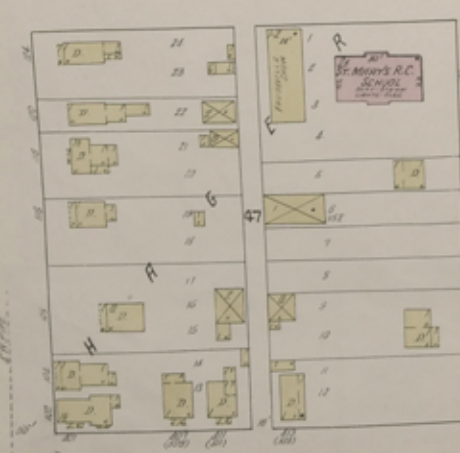


3RD AV. N. E. (OAK V AV. E.)

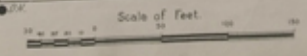


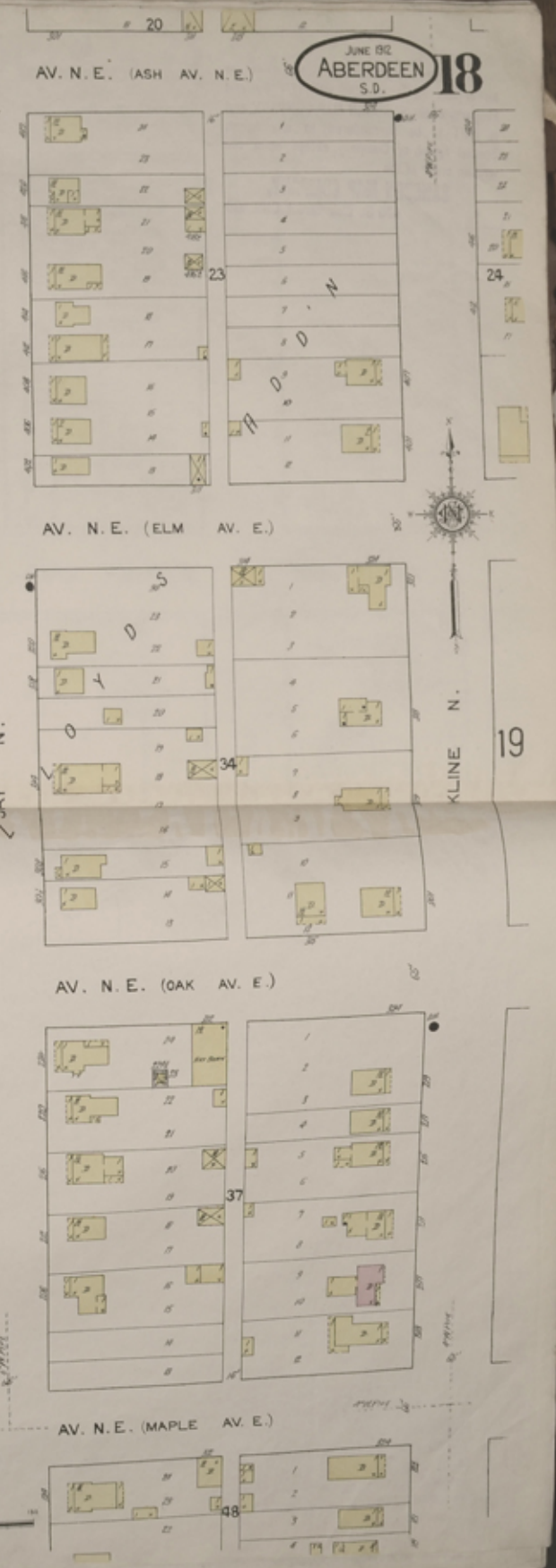
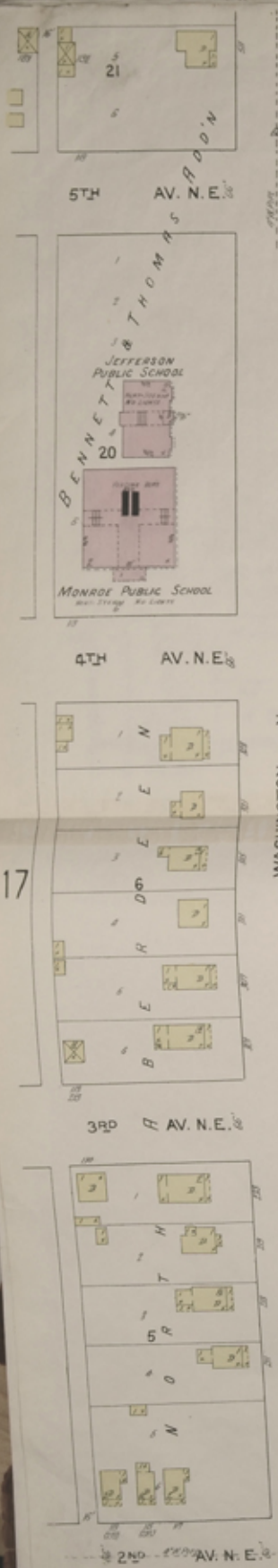
LLOYD N.

2ND AV. N. E. (MAPLE AV. E.)

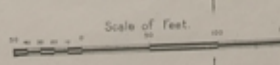


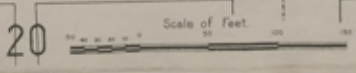
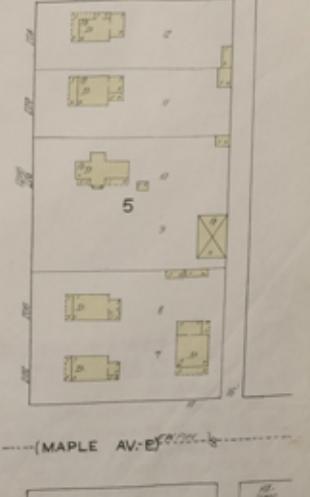
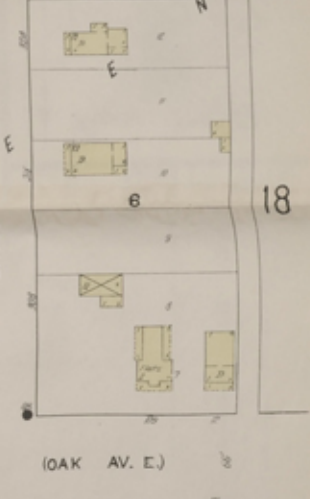
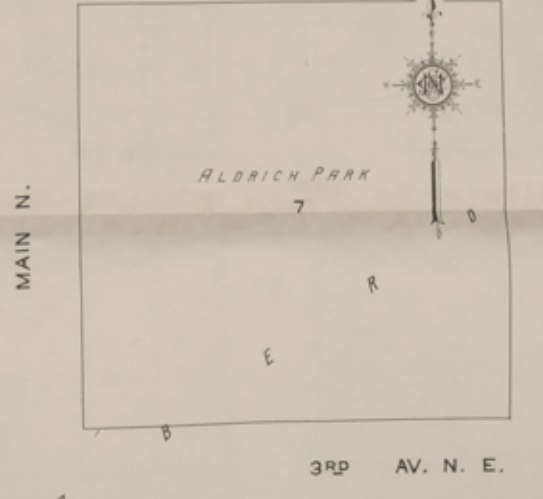
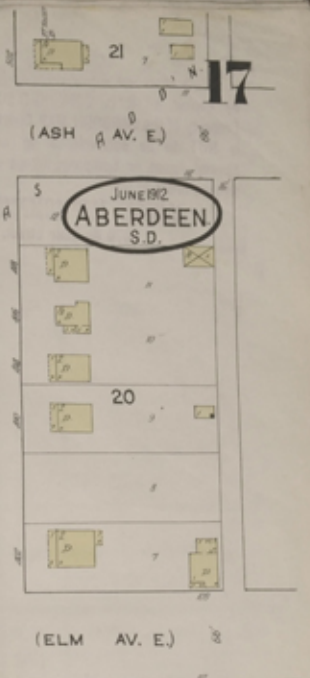
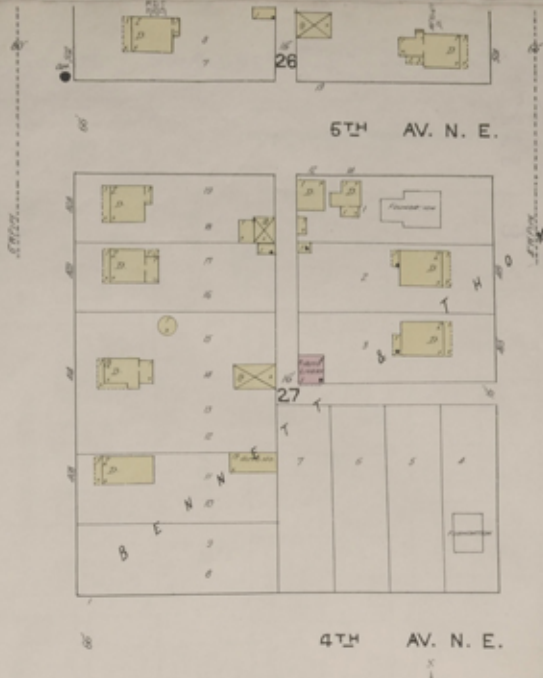
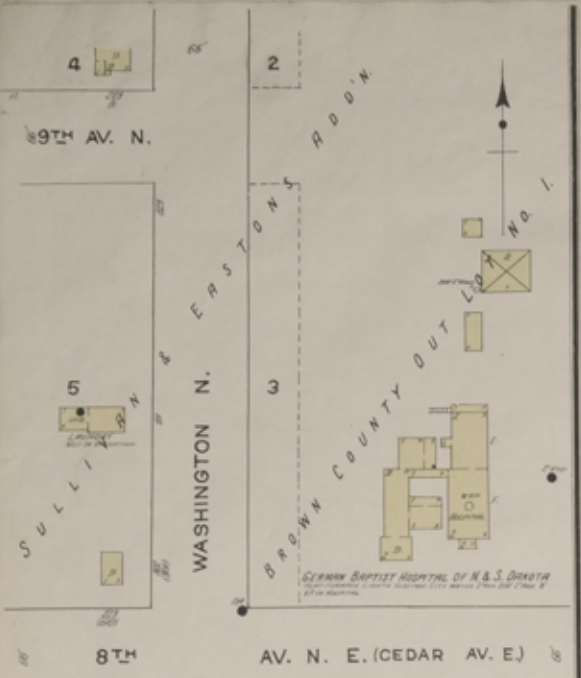
AV. N. E. (WALNUT AV. E.)





JUNE 1912
ABERDEEN
 S.D. **18**





12

9TH AV. S. E.

13

16

JUNE 512
ABERDEEN
S.D.

15

LINCOLN S.

WASHINGTON S.

JAY S.

16

10TH AV. S. E.

13

9TH AV. S. E.

WOOLVERTONS BLD'G.

13
CITY SENIOR
PUMPING PLANT

11TH AV. S. E.

15

12TH AV. 6 W.

KLINE S.

ARCH S.

MAIN S.

10TH AV. S. E.

Scale of Feet

The Dakota FRAMER.

Printed and Published by
The Dakota FRAMER
1111 Broadway
Aberdeen, S. D.

Map of Aberdeen, S. D.
Copyright 1912
By The Dakota FRAMER



9TH

11 AV. S. W.

9TH 12 AV. S. E.

15

JUNE 1912
ABERDEEN
S.D.



10TH

AV. S. W.

10TH AV. S. E.

2ND ST. S.
14

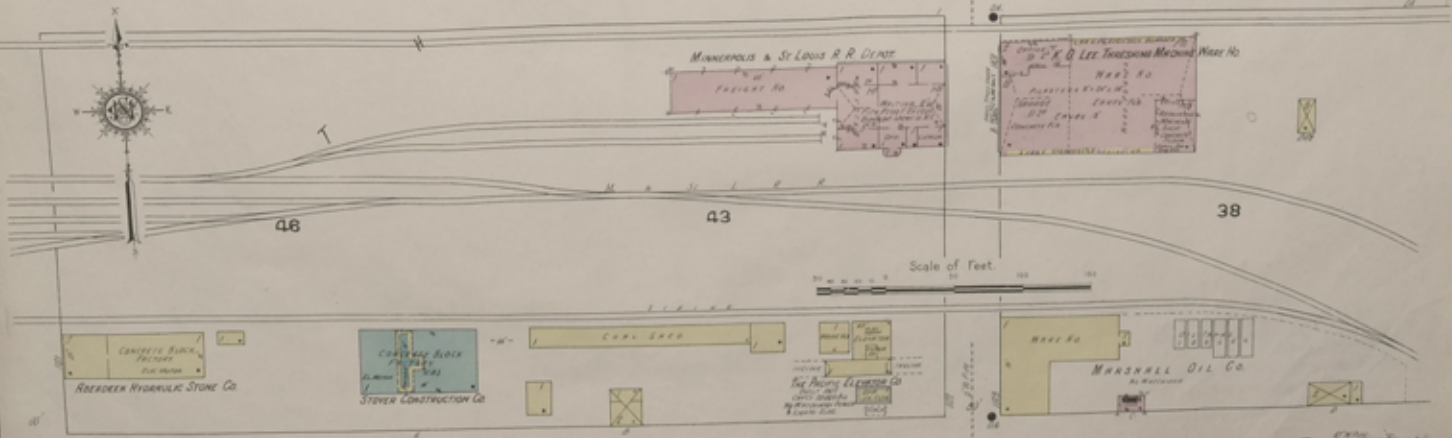


11TH

AV. S. W.

11TH AV. S. E.

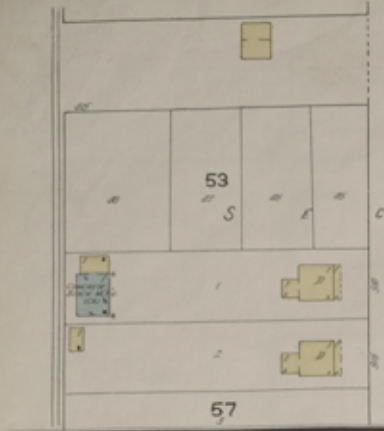
LINCOLN S.



12TH AV. S. W.

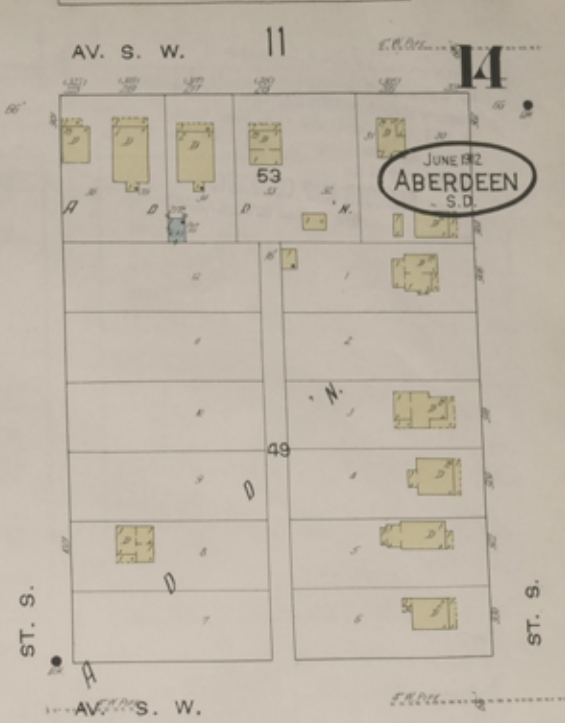
16

12TH AV. S. E.

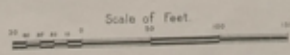
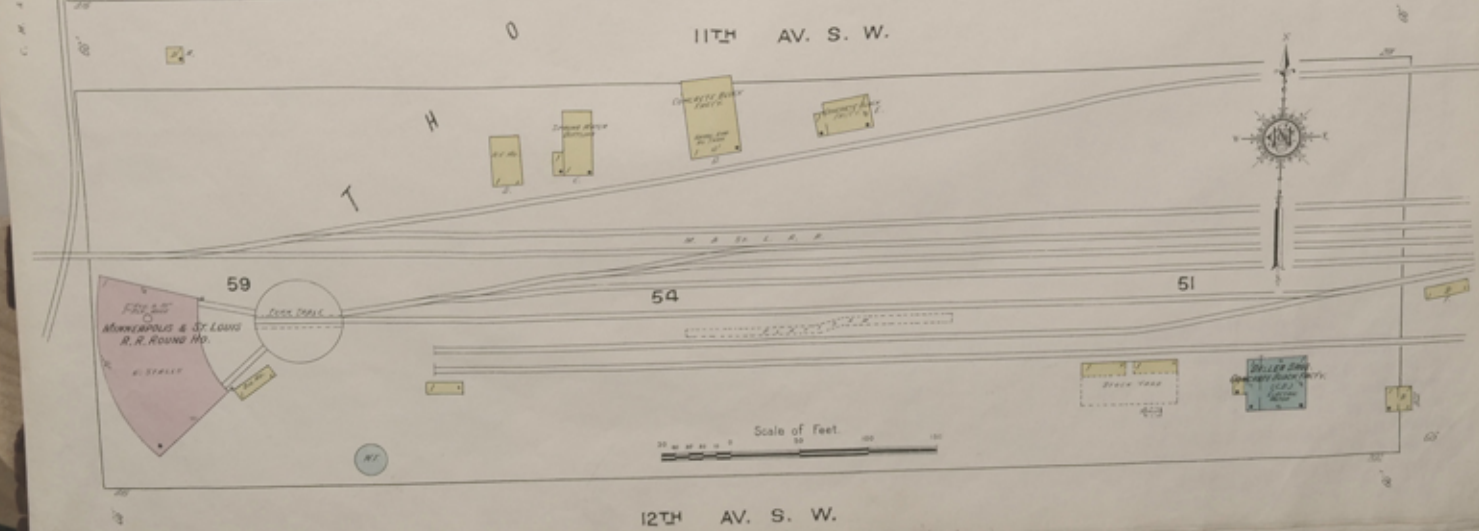
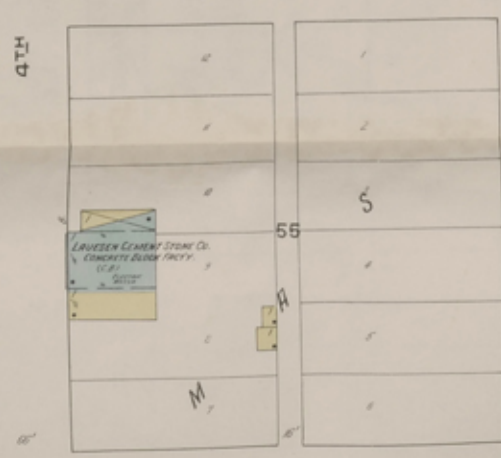


ABERDEEN BRICK CO.
 (FORMERLY W. F. FINE BRICK YARD)
 40 MILLICAN BLVD. PARK -
 40 1/2 ST. S.W.

Located 1/2 Mile N. E. of Court Ho.



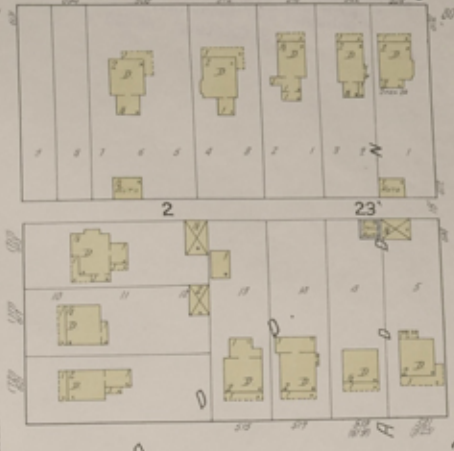
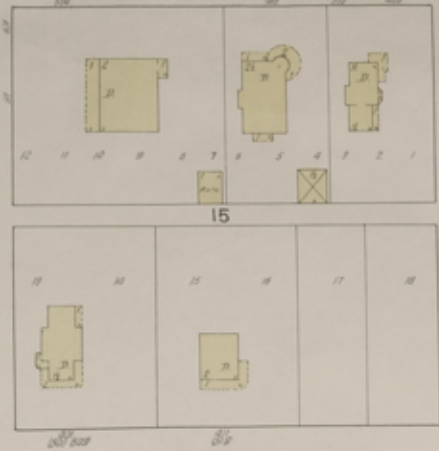
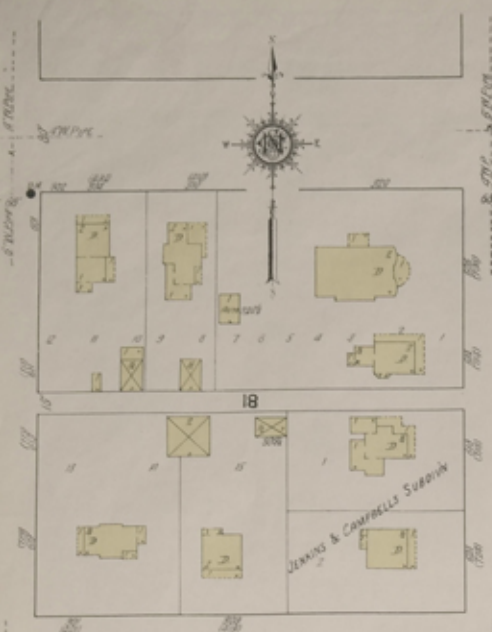
JUNE 1912
ABERDEEN
 S. D.



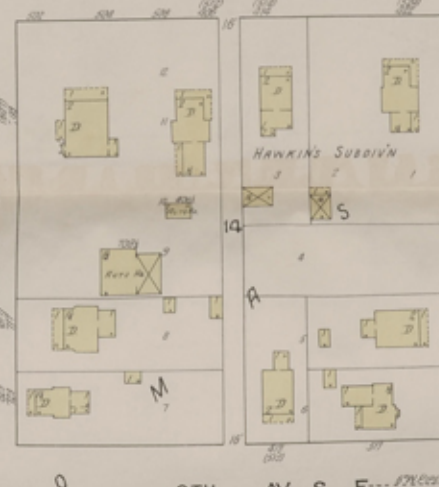
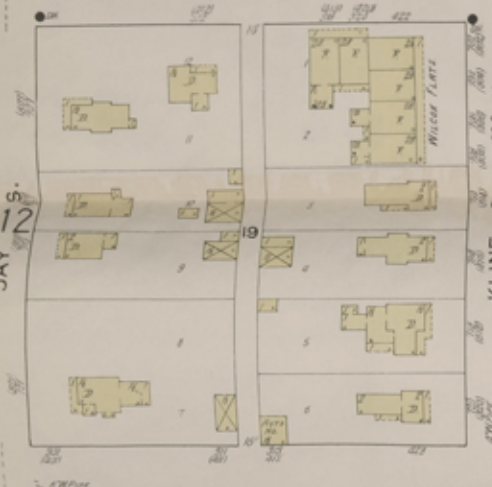
C. M. & D. P. N. H. ST. S.W.

6TH AV. S. E. (NICOLLET AV. E.)

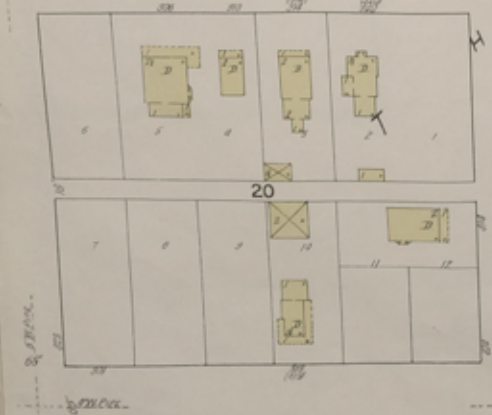
9



7TH AV. S. E.



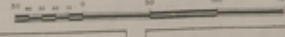
8TH AV. S. E.



9TH AV. S. E.

16

Scale of Feet



23

STATE S.

JAY 12 S.

STREET

STREET

KLINE S.

ARCH S.

TRAIL

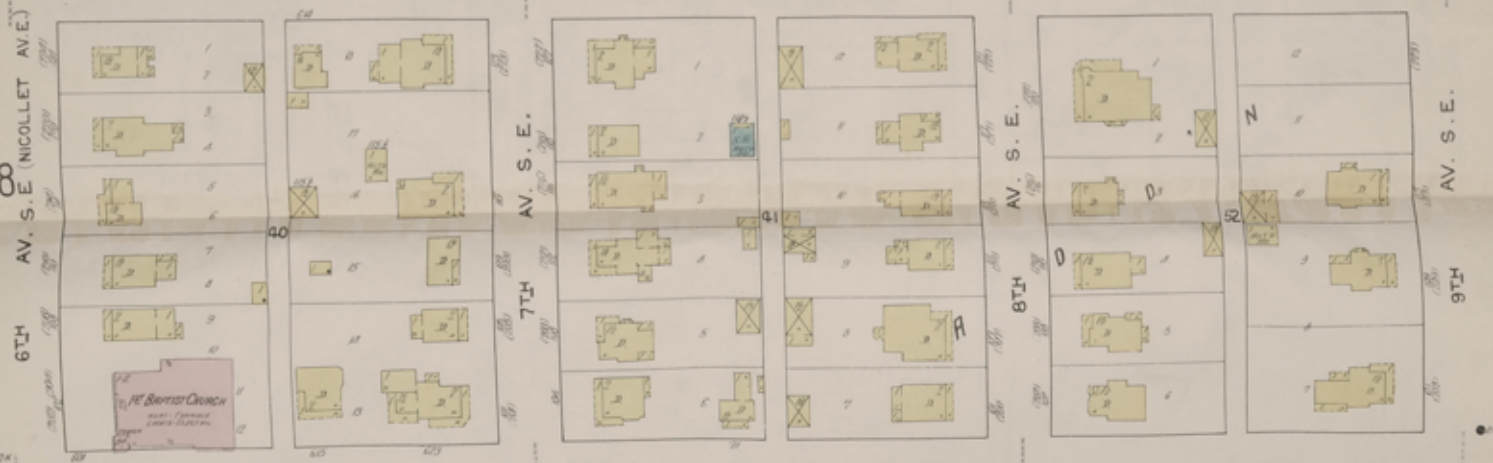
13
JAY S.

JUNE 30
ABERDEEN
S.D.

12



WASHINGTON S.



LINCOLN S.



MAIN S.

11

Scale of Feet
0 50 100

JUNE 1912
ABERDEEN
S.D.

6TH AV. S. W. (NICOLLET AV. W.)



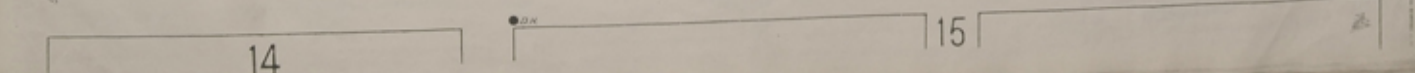
7TH AV. S. W.



8TH AV. S. W.

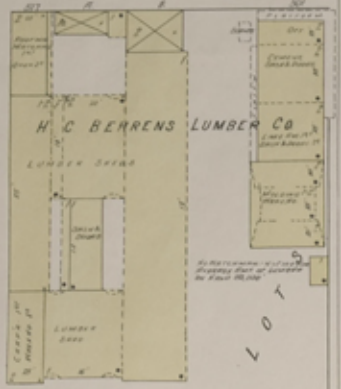


9TH AV. S. W.



Scale of Feet

6TH AV. S.W. (NICOLLET AV. W.)



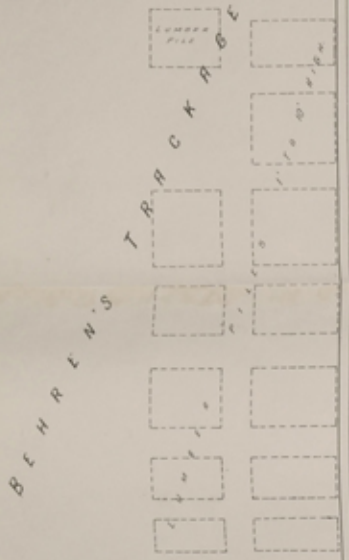
7TH AV. S.W.



8TH AV. S.W.



14



11 ST. S.

3RD ST. S.

4TH ST. S.

5TH ST. S.

6TH ST. S.

7TH ST. S.

8TH ST. S.

9TH ST. S.

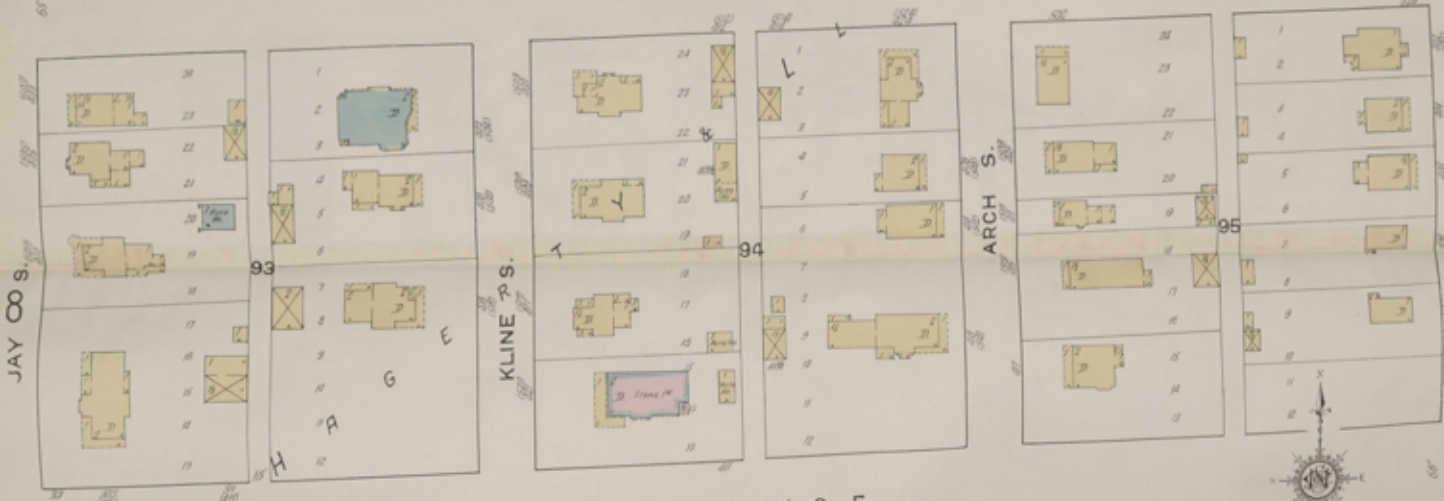
10TH ST. S.

JUNE 92
ABERDEEN
S.D.

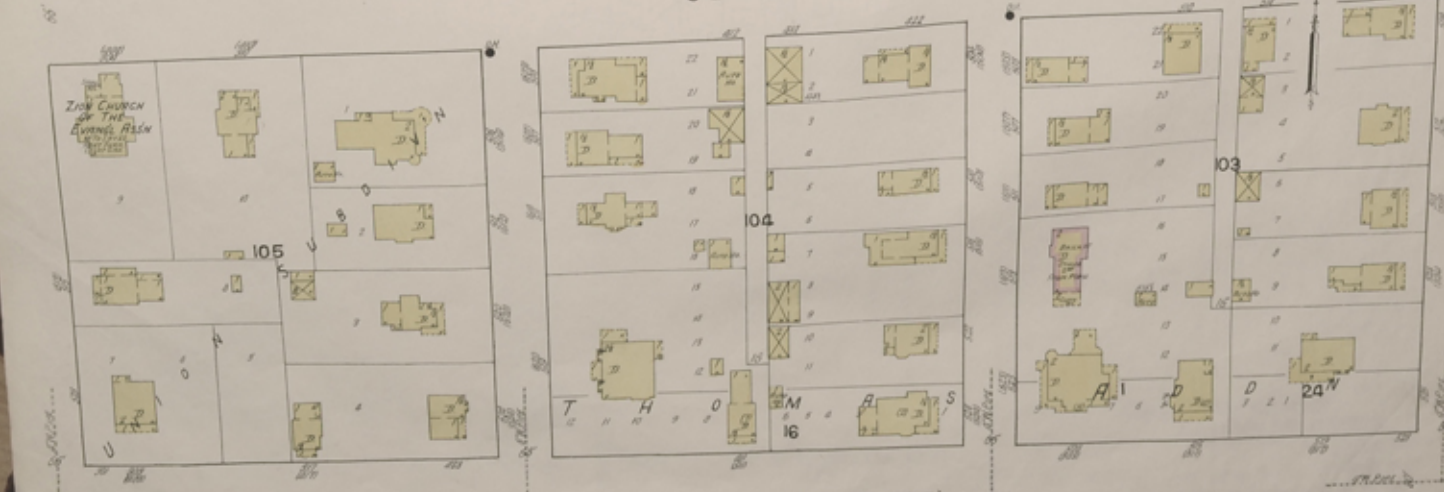
3RD AV. S. E.



4TH AV. S. E.



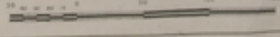
5TH AV. S. E.



6TH AV. S. E. (NICOLLET AV. E.)



Scale of Feet



JAY 9 S.

JUNE 02
ABERDEEN
S.D.

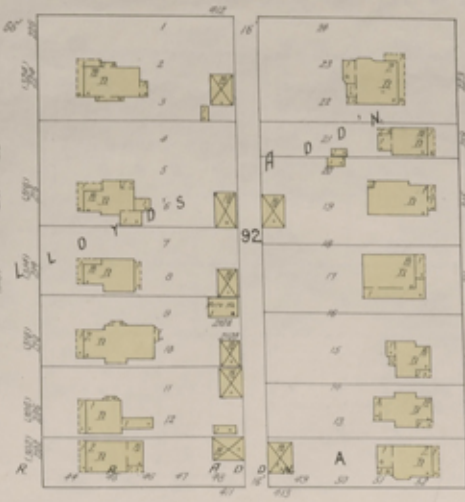
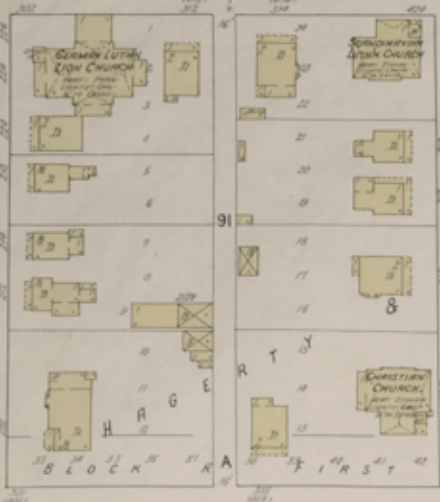
8

4

AV. S. E.

3RD

3

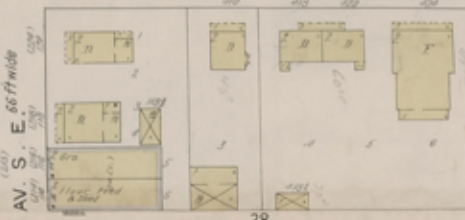


WASHINGTON S

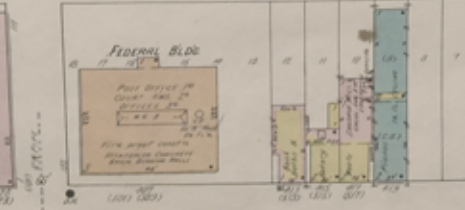
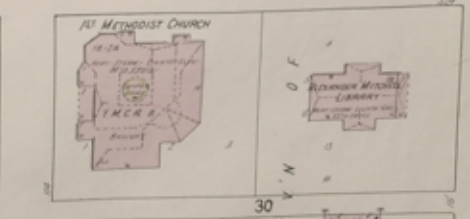
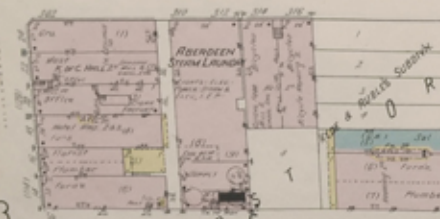
AV. S. E. 66 ft wide

AV. S. E. 66 ft wide

AV. S. E. NICOLLET (AV. E.)



N LINCOLN S.



MAIN 7 S.

Scale of Feet

7

JUNE 1917
ABERDEEN
S.D.

2

3

3RD AV. S.W.



4TH AV. S.W.



5TH AV. S.W.



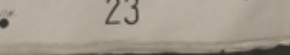
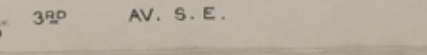
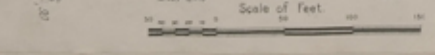
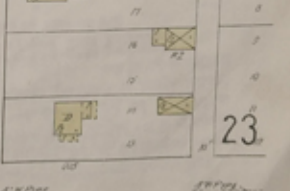
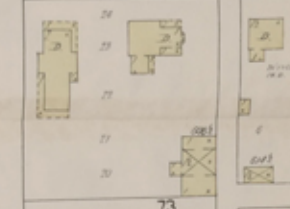
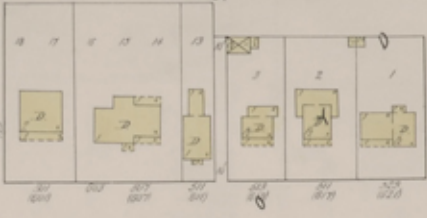
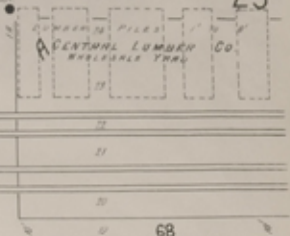
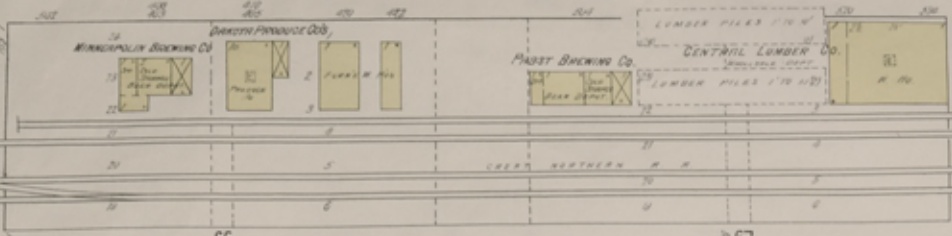
6TH AV. S.W. (NICOLLET AV. W.)



Scale of Feet

KLINE N

STATE N. E.



4 s.

KLINE S.

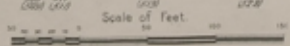
ARCH S.

STATE S.

1ST AV. S. E.

2ND AV. S. E.

3RD AV. S. E.

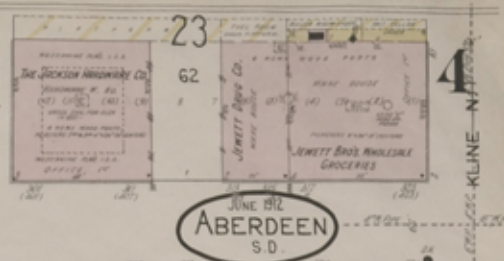


23

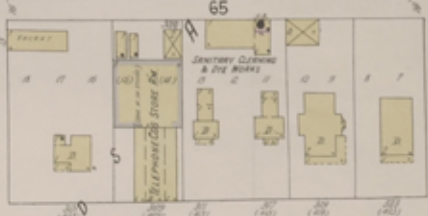
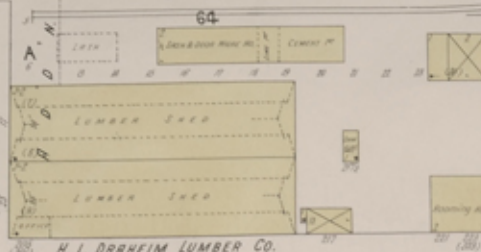
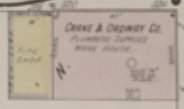
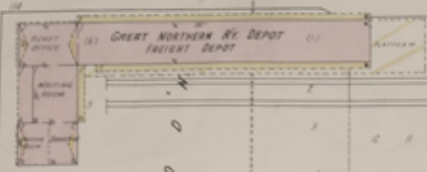


21

RAILROAD AV. S. E.



COURT (PARK PL.)



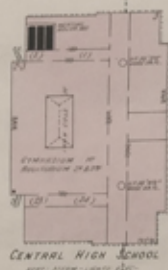
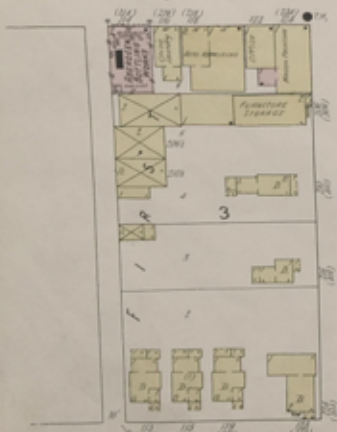
1ST AV. S. E.



WASHINGTON S.

KLINE S.

2ND AV. S. E.



Scale of Feet

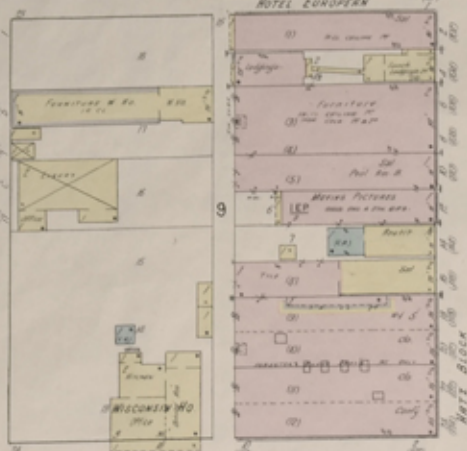
3RD AV. S. E.

9

3

5

RAILROAD AV. S. W.



1ST AV. S. W.

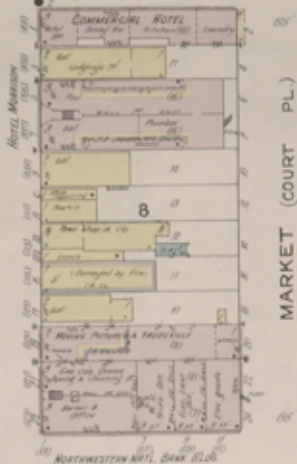


2ND AV. S. W.



3RD AV. S. W.

RAILROAD AV. S. E.



1ST AV. S. E.

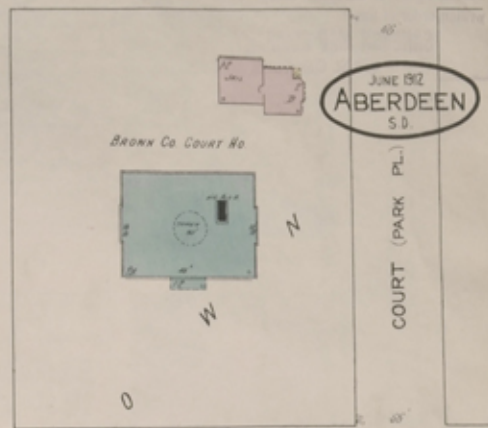


2ND AV. S. E.



3RD AV. S. E.

JUNE 1912 ABERDEEN S.D.



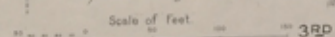
1ST AV. S. E.



2ND AV. S. E.



3RD AV. S. E.





Insurance Maps

Aberdeen

BROWN COUNTY
SOUTH DAKOTA

Sanborn Map Company

SCALE SOFT TO AN INCH 11 BROADWAY, NEW YORK

June 1912

Copyright 1912 by the Sanborn Map Co.

Population 14000. Prevailing Winds N.W.

WATER FACILITIES

22 miles of water pipe, 47 1/2" diam. Main mains on Main St. about 22 miles and 48 smaller hydrants and six trap hydrants. Pressure from 25 to 60 lbs.
Water supply from 21 artesian wells, average depth 800 ft. Combined flow about 25,000 gals. per hour, maximum being built up on W. Washington St. and 27th St. to drive electric fans during emergency only.

FIRE DEPARTMENT

Water paid over seven horses. One steam fire engine. Two combustion motor and chemical engines, one hose wagon in reserve. 200 ft. hose on each wagon. One set of 2 1/2 inch 100 ft. cotton rubber lined hose. In good condition. 200 ft. 1/2 inch rubber hose. Fire alarm by telephone answered by bell and whistle.

Grass level. 1/2 inch of color block paving. Streets not paved are kept in fair condition. Public lighting gas and electric are independent. No day and four night poles.

KEY	
1	Water Main
2	Water Pipe
3	Water Hydrant
4	Trap Hydrant
5	Fire Engine
6	Chemical Engine
7	Hose Wagon
8	Fire Alarm
9	Telephone
10	Electric Light
11	Gas Light
12	Public Building
13	City Hall
14	Police Station
15	Fire Station
16	Water Tower
17	Water Pump
18	Water Tank
19	Water Valve
20	Water Plug
21	Water Stop
22	Water Meter
23	Water Pipe
24	Water Main



INDEX.

STREETS.		STREETS.		STREETS.		STREETS.		STREETS.		STREETS.		STREETS.		STREETS.	
Arch St.	100-102	1st St.	100-102	10th St.	100-102	19th St.	100-102	28th St.	100-102	37th St.	100-102	46th St.	100-102	55th St.	100-102
...

* Indicates only one side of Street shown.