

# South Dakota HIGHWAY MAP

One inch equals approximately 15 miles.

Scale: 0 10 20 30 miles

Copyright by South Dakota Highway Commission, Pierre, South Dakota  
 Printed by Best Printing Co., Chicago, Ill. Lithographed in U.S.A.

### LEGEND

**PRIMARY SYSTEM (U.S. and State Highways)**  
 Divided Highways, Paved Roads, Graveled Roads, Graded and Earth Roads

**SECONDARY SYSTEM (County Roads)**  
 Road turning out from main road, Road turning out from secondary road

**CITIES AND TOWNS**  
 Population based on 1950 census and position of type:  
 1000-2500, 2500-5000, 5000-10,000, 10,000 and over

**Points of Interest**  
 Airports, Air Routes, Railroads, State Capital, County Seats, Roadside Parks, State Lines, County Lines, Rivers and Streams, Intermittent Streams and Lakes, Indian Reservations

**Other Symbols:**  
 U.S. Numbered Highways, State Numbered Highways, Mileage shown between towns and junctions, Accumulated mileage shown between stars, National Parks, State Recreation Areas, State Parks, National Monuments, National Forests, Indian Reservations

### INDEX TO CITIES AND TOWNS

<b>SOUTH DAKOTA</b> Pop. 659,740 1950 Census	Aurora, 302 Becker, 180 Belle Fourche, 215 Black Hills, 175 Brookings, 1046 Butte, 1046 Canton, 154 Chamberlain, 1046 Chickadee, 1046 Custer, 1046 Dakota, 1046 DeSmet, 1046 Dewey, 1046 Eagle, 1046 Elk Point, 1046 Ellington, 1046 Elyria, 1046 Faulk, 1046 Fort Pierre, 1046 Frederick, 1046 Garden City, 1046 Harrison, 1046 Hawarden, 1046 Huron, 1046 Julesburg, 1046 Kearney, 1046 Lead, 1046 Le Mars, 1046 Madison, 1046 Marshall, 1046 McCook, 1046 Mitchell, 1046 Newell, 1046 Ogallala, 1046 Pierre, 1046 Rapid City, 1046 Sioux Falls, 1046 Spearhead, 1046 Sturgis, 1046 Tabor, 1046 Timber Lake, 1046 Vermillion, 1046 Wahpeton, 1046 Waxham, 1046 Wheatland, 1046 Wynnewood, 1046	... [Remaining cities and towns in alphabetical order] ...
--	---	--

### DISTANCE SCALE

To determine straight line, land or air distances the border divisions of this map are designed to equal approximately 30 miles between points. For shorter distances the portion of border shown below is subdivided into 1 mile intervals.

**Land & Air**

0 10 20 30 40 50 60 70 80 90 100 110 120 130 140 150 160 170 180 190 200 210 220 230 240 250 260 270 280 290 300 310 320 330 340 350 360 370 380 390 400 410 420 430 440 450 460 470 480 490 500 510 520 530 540 550 560 570 580 590 600 610 620 630 640 650 660 670 680 690 700 710 720 730 740 750 760 770 780 790 800 810 820 830 840 850 860 870 880 890 900 910 920 930 940 950 960 970 980 990 1000

*America's Favorite FUN COUNTRY!*

**South Dakota**

160

**South Dakota**

1953 HIGHWAY MAP

*Think Safety... Travel Happy... Enjoy SOUTH DAKOTA!*

PUBLISHED BY SOUTH DAKOTA STATE HIGHWAY COMMISSION  
 GOVERNOR SIGURD ANDERSON, Chairman

Commissioners:  
 C. H. Gunderson, Mail Gauge, Stirling H. Clark  
 F. W. Mitchell, Secretary  
 H. C. Renner, Highway Engineer  
 A. H. Perkins, Publicity Director



# This is SOUTH DAKOTA

## Sound, Solvent and Progressive

# Land of Infinite Variety

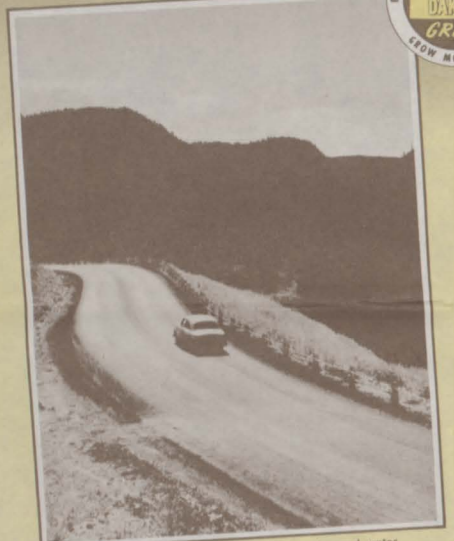
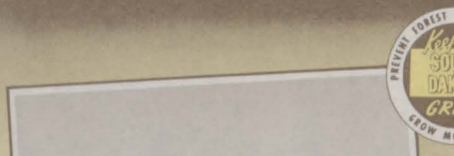
The major basis of South Dakota's wealth is its soil which each year produces the surpluses in crops and livestock that go to help feed those areas in the world and nation less fortunately situated. Without losing our high position in agricultural production we are gradually becoming industrialized, thereby assuring a better balance in our economy. Research is discovering new mineral wealth and developing wider use of others. In the aim to establish more industries, South Dakota is turning to the immense amount of raw materials produced annually on its farms, processing some into merchantable products for the consumer or taking the first steps in that process.

Accompanying developments will come from the vast fields of lignite coal, manganese, shale and other deposits which await cheaper power and transportation. These are some of the reasons why the people of our state look into the future with confidence while energetically working to make the present one of progress and agreeable living. Opportunity as well as topography has earned the slogan for South Dakota: Land of Infinite Variety.

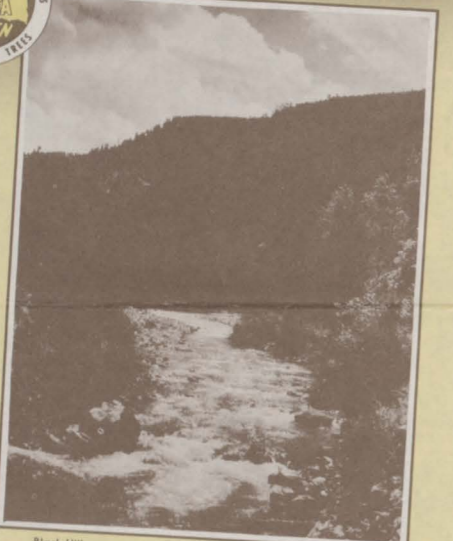


*Sigurd Anderson*  
GOVERNOR

Some of our state's future can even now be foretold. The great dams being constructed on the Missouri River within its boundaries and the impounding of water on a number of feeder streams will be the bases of many new developments. The Missouri Basin Development program will give South Dakota flood control, hydro-electric power, irrigation, soil conservation and expanded recreational benefits. These benefits will combine to stabilize our economy.



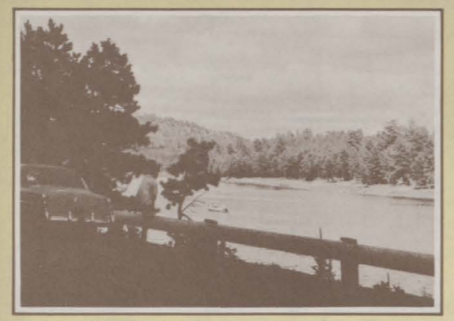
Spearfish Canyon, where spruce, mountains, and water combine to make scenic highways in the Black Hills.



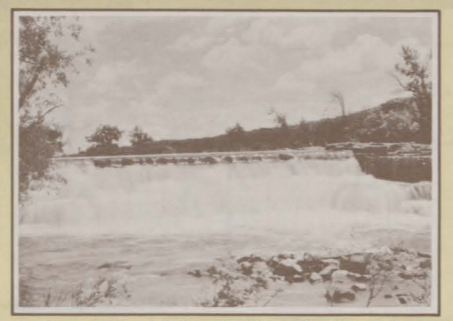
Black Hills mountain streams have picturesque settings and are sought by skilled fly fishermen.



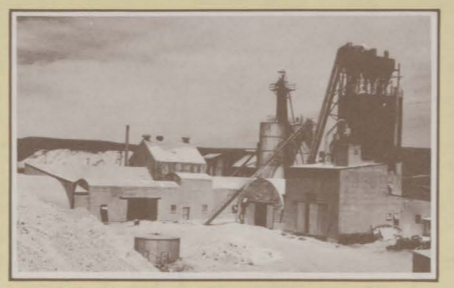
Mount Rushmore known world-wide as the National Shrine of Democracy, is one of the most notable and noble achievements of man. It is the last and greatest work of that famed sculptor, Gutzon Borglum.



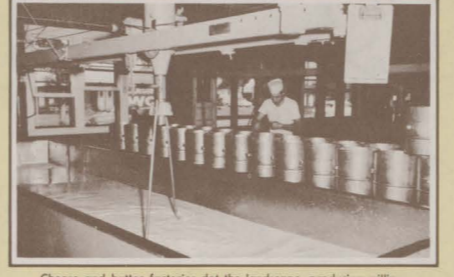
Here a Black Hills canyon has been dammed to catch spring-fed streams to form a lake.



Picturesque falls and rippling water of the Big Sioux River provide attractive recreational areas.



Bentonite mill which processes the raw deposit to prepare it for a wide use in industry.



Cheese and butter factories dot the landscape, producing millions of pounds for the nation's table.



The dehydrating mill here is reducing alfalfa, the basic plant from which chlorophyll is extracted.



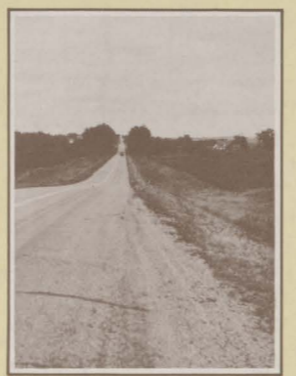
Prime cattle, hogs and sheep come from fields and feed lots.



Meat packing is the State's largest industry, converting livestock into consumer goods.



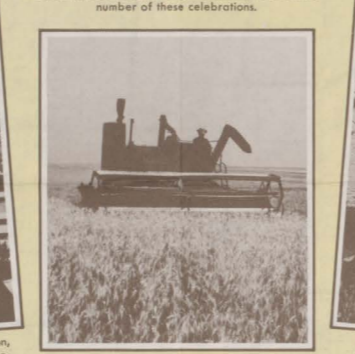
Throughout the summer, rodeos are a part of most celebrations. The nation's top riders can be seen in a number of these celebrations.



Highways and marketing centers cooperate to find outlets for huge production of farms and ranches.



Homestake Gold Mine, the largest in the nation, has been in operation continuously for three-quarters of a century.



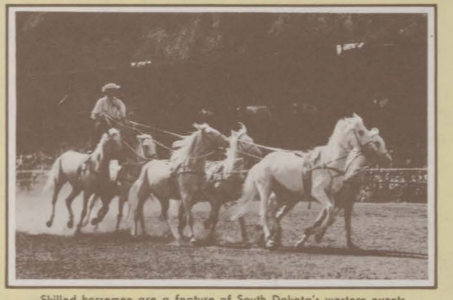
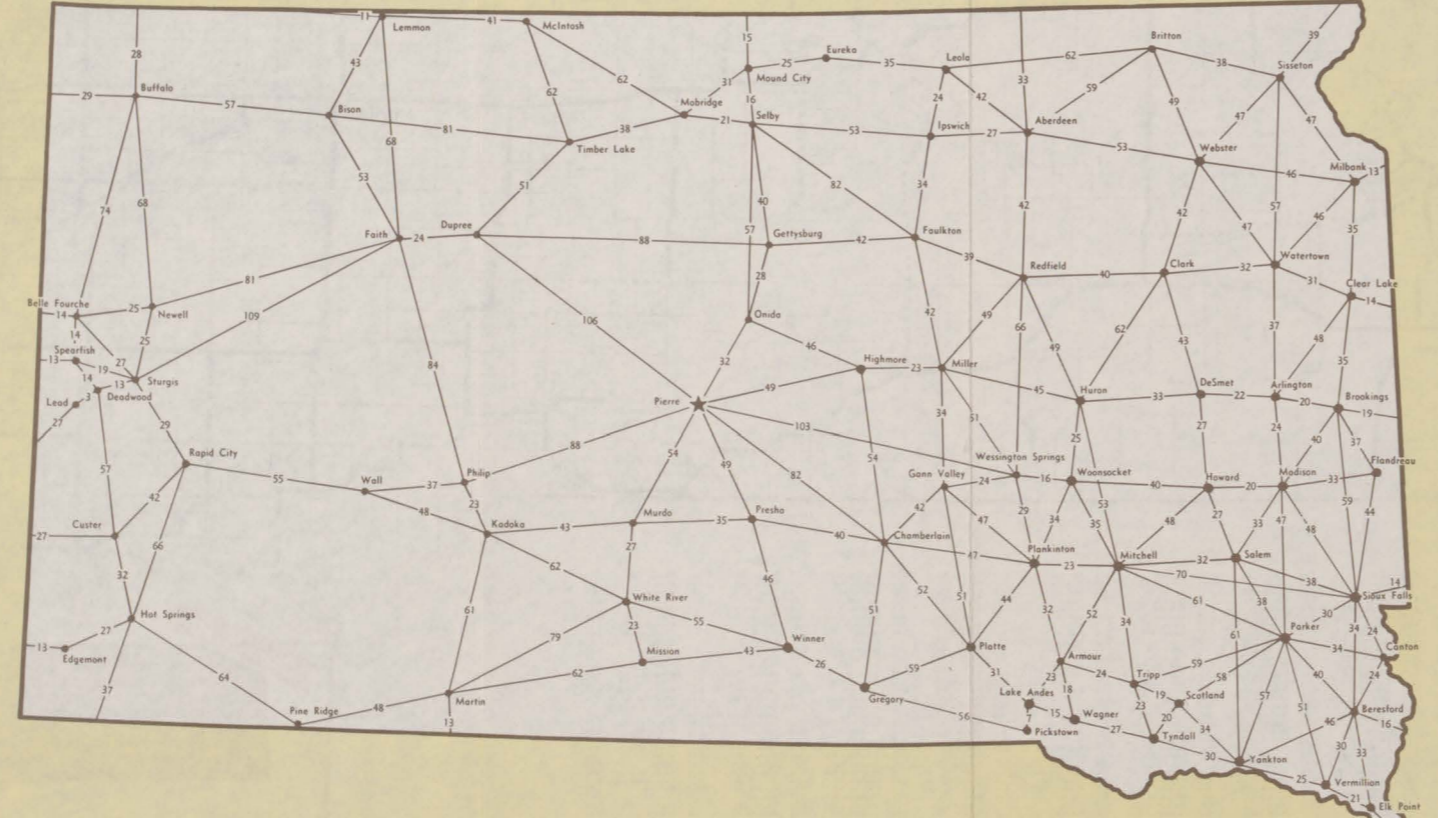
Vast fields of wheat help provide the nation with its daily bread.



Natural and man-made lakes, well stocked with game fish, give variety to landscapes.

**NEIGHBORING STATES OF SOUTH DAKOTA**  
One inch equals approximately 118 miles.  
Scale: 1" = 118 miles  
Copyright by Rand McNally & Company, Chicago, Ill. Lithographed in the U.S.A.

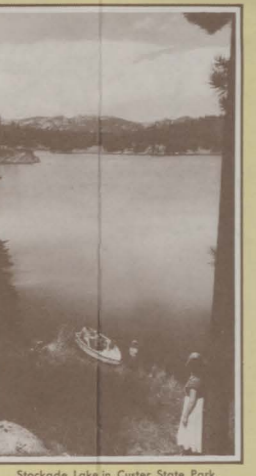
State	Area (sq. mi.)	Population (1930)	Capital
Alabama	52,420	2,049,000	Montgomery
Arizona	113,970	1,000,000	Tucson
Arkansas	53,170	1,800,000	Little Rock
California	158,330	6,000,000	Sacramento
Colorado	104,230	1,500,000	Denver
Connecticut	5,540	1,200,000	Hartford
Delaware	2,480	250,000	Dover
District of Columbia	370	200,000	Washington
Florida	55,560	2,500,000	Tallahassee
Georgia	59,240	2,500,000	Atlanta
Idaho	84,240	1,000,000	Boise
Illinois	142,960	4,000,000	Springfield
Indiana	36,420	3,000,000	Indianapolis
Iowa	71,520	2,500,000	Des Moines
Kansas	82,270	2,000,000	Topeka
Kentucky	40,350	2,500,000	Frankfort
Louisiana	52,430	2,000,000	Baton Rouge
Maine	33,090	1,000,000	Portland
Maryland	12,160	2,500,000	Annapolis
Massachusetts	8,010	2,500,000	Boston
Michigan	96,490	4,000,000	Lansing
Minnesota	225,180	3,000,000	St. Paul
Mississippi	47,820	2,000,000	Jackson
Missouri	69,700	3,000,000	Jefferson City
Montana	147,040	1,000,000	Helena
Nebraska	77,340	2,000,000	Lincoln
Nevada	110,640	1,000,000	Carson City
New Hampshire	9,330	1,000,000	Manchester
New Jersey	8,720	4,000,000	Trenton
New Mexico	121,670	1,000,000	Santa Fe
New York	47,150	12,000,000	Albany
North Carolina	53,810	3,000,000	Raleigh
North Dakota	70,690	1,000,000	Bismarck
Ohio	44,820	4,000,000	Columbus
Oklahoma	69,890	1,500,000	Oklahoma City
Oregon	85,220	1,500,000	Salem
Pennsylvania	46,050	6,000,000	Harrisburg
Rhode Island	1,540	1,000,000	Providence
South Carolina	32,240	2,000,000	Columbia
South Dakota	77,100	1,000,000	Sioux Falls
Tennessee	63,440	3,000,000	Nashville
Texas	267,780	5,000,000	Austin
Vermont	9,490	1,000,000	Montpelier
Virginia	42,770	3,000,000	Richmond
Washington	71,300	2,000,000	Olympia
West Virginia	24,060	1,500,000	Charleston
Wisconsin	54,300	3,000,000	Madison
Wyoming	97,810	1,000,000	Cheyenne



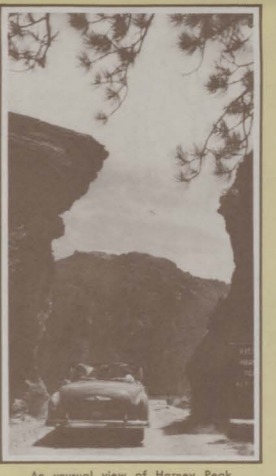
Sponsored horsemen are a feature of South Dakota's western events.



Fort Randall Dam, the first to be completed on the upper Missouri River, is impounding water and will be in full operation by the first of next year.



Stockade Lake in Custer State Park, is a scenic gem that few visitors miss.



An unusual view of Harney Peak, highest mountain east of the Rockies.



The world's only Corn Palace, Mitchell, famed for its unique architecture and tourist information bureau.



Happy hunters are striking it for home. South Dakota is noted for its game bird variety.



The Black Hills Passion Play, Spearfish, portrays each summer the last days of the Christ. It is a notable portrayal by Joseph Meier.



This is a part of Fort Sisseton, the most complete fortress built on the frontier following the Indian outbreak of 1862.



The exotic and eerie Badlands are the travel objective of a half-million visitors each year.